

LOC/DME I-TSL 111.1 Chan 48	APP CRS 273°	Rwy Ldg 13000 TDZE 651 Apt Elev 680
---	------------------------	--

ILS or LOC RWY 28R

CHICAGO O'HARE INTL (ORD)

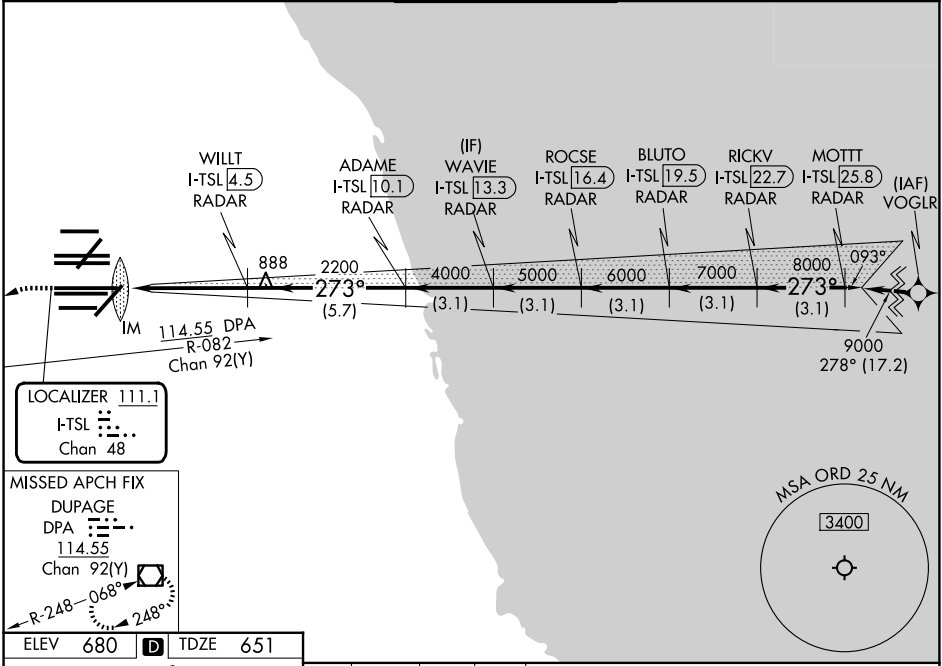
From VOGLR: RNAV 1-GPS required.
Aircraft not GPS equipped - RADAR required for procedure entry.
DME or RADAR required.

ALSF-2

MISSED APPROACH: Climb to 1100 then climbing left turn to 4000 on heading 215° and DPA VOR/DME R-082 to DPA VOR/DME and hold.

Simultaneous approach authorized.

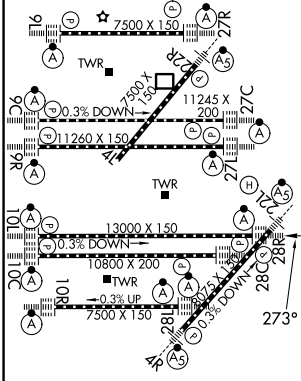
D-ATIS 135.4 282.225	CHICAGO APP CON 119.0 292.125	O'HARE TOWER 132.7 348.0	GND CON (TWR CENTER) 124.125 (TWR NORTH) 118.05 (TWR SOUTH) 226.675 (ALL TWRS)	121.75 (OBND) 121.9 (IBND)
--------------------------------	---	------------------------------------	--	---



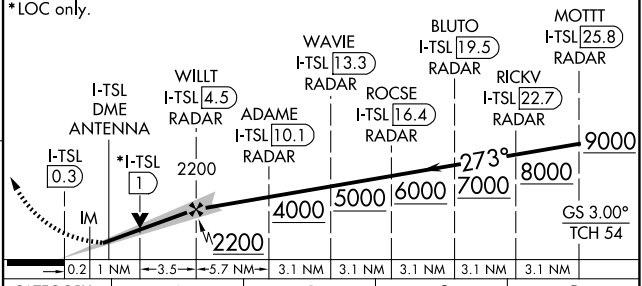
EC-3, 09 JUL 2026 to 06 AUG 2026

EC-3, 09 JUL 2026 to 06 AUG 2026

ELEV 680	D	TDZE 651
-----------------	----------	-----------------



1100	4000	DPA	VGSI and ILS glidepath not coincident (VGSI Angle 3.00/TCH 70).
↑	hdg 215°	R-082	



HIRL all rwy's				
TDZL/RCLS all rwy's except 4L				
FAF to MAP 4.7 NM				
Knots	60	90	120	150
Min:Sec	4:42	3:08	2:21	1:53

CATEGORY	A	B	C	D
S-ILS 28R	851/18 200 (200-½)			
S-LOC 28R	1120/24	469 (500-½)	1120/50	469 (500-1)