

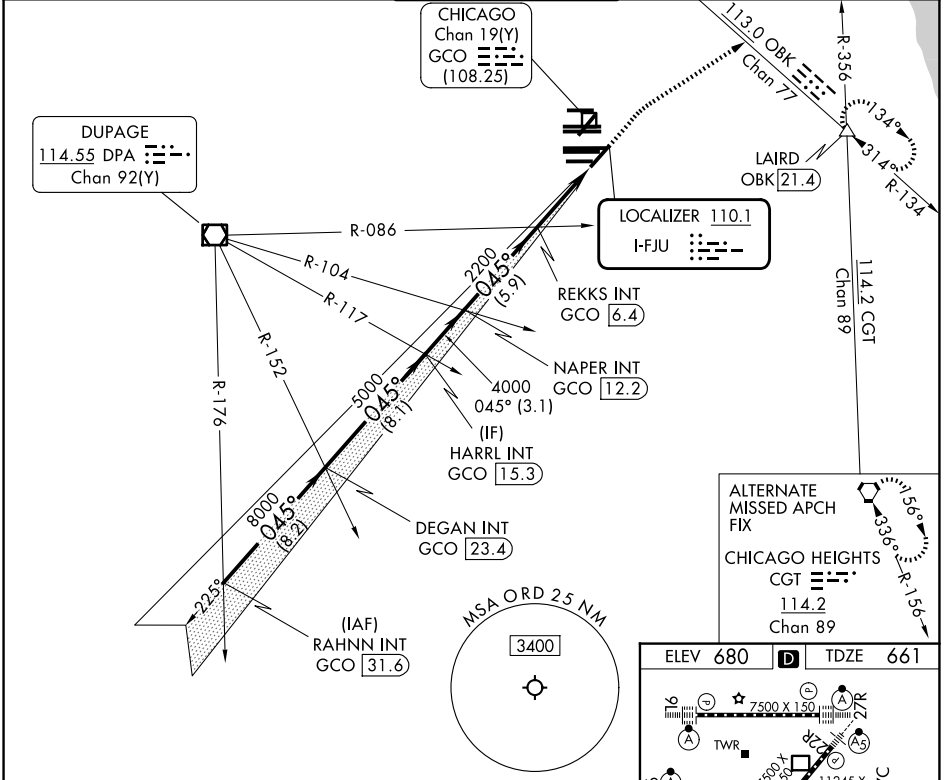
LOC I-FJU 110.1	APP CRS 045°	Rwy Ldg TDZE Apt Elev	8075 661 680
---------------------------	------------------------	-----------------------------	---

ILS or LOC RWY 4R

CHICAGO O'HARE INTL (ORD)

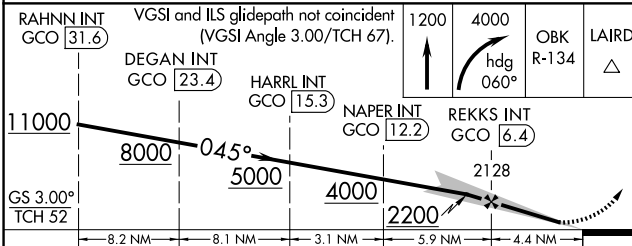
RADAR required for procedure entry.		MALSR	MISSED APPROACH: Climb to 1200 then climbing right turn to 4000 on heading 060° and OBK VOR/DME R-134 to LAIRD INT/OBK 21.4 DME and hold.	
-------------------------------------	--	-------	---	--

D-ATIS 135.4 282.225	CHICAGO APP CON 119.0 292.125	O'HARE TOWER 120.75 348.0	GND CON (TWR CENTER) 124.125 (TWR NORTH) 118.05 (TWR SOUTH) 226.675 (ALL TWRs)	(TWR CENTER) 121.75 (OBND) 121.9 (IBND)
--------------------------------	---	-------------------------------------	--	---

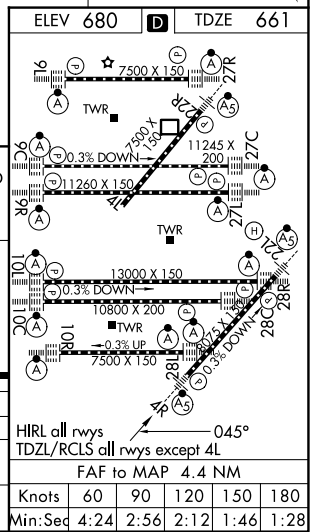


ALTERNATE MISSED APCH FIX

CHICAGO HEIGHTS
CGT 114.2
Chan 89



RAHNN INT GCO 31.6	DEGAN INT GCO 23.4	HARRL INT GCO 15.3	NAPER INT GCO 12.2	REKKS INT GCO 6.4	OBK R-134	LAIRD INT
VGSI and ILS glidepath not coincident (VGSI Angle 3.00/TCH 67).		1200		4000		
GS 3.00° TCH 52		hdg 060°				
CATEGORY	A	B	C	D		
S-ILS 4R	861/18		200 (200-½)			
S-LOC 4R	1160/24	499 (500-½)	1160/50	499 (500-1)		
CIRCLING	1220-1	540 (600-1)	1220-1½	1460-2½	780 (800-2½)	



EC-3, 09 JUL 2026 to 06 AUG 2026

EC-3, 09 JUL 2026 to 06 AUG 2026