

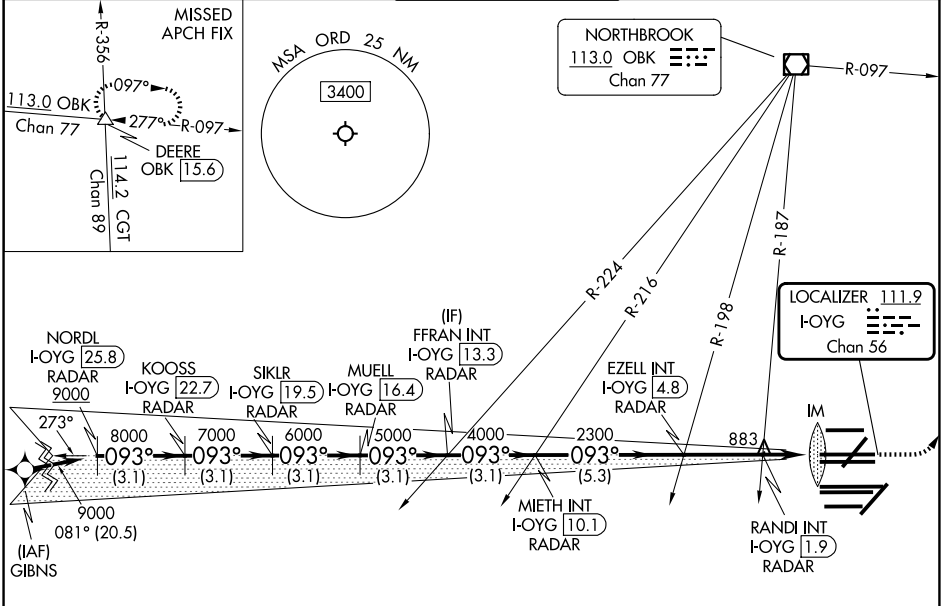
LOC/DME I-OYG 111.9 Chan 56	APP CRS 093°	Rwy Ldg 11245 TDZE 673 Apt Elev 680
--	------------------------	--

ILS or LOC RWY 9C

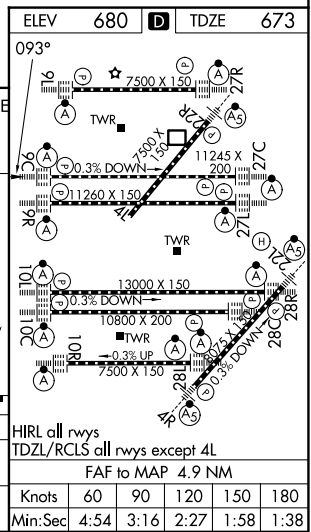
CHICAGO O'HARE INTL (ORD)

RNP APCH - GPS. From GIBNS.	ALSF-2	MISSED APPROACH: Climb to 1200 then climbing left turn to 4000 on heading 037° and OBK VOR/DME R-097 to DEERE INT/OBK 1.5.6 DME and hold.
DME or RADAR required. RADAR required for procedure entry at GIBNS.		
<p>Simultaneous approach authorized. For inop ALS, increase S-LOC 9C Cat C/D visibility to 1 1/2 SM. Localizer not suitable for electronic rollout guidance.</p>		

D-ATIS 135.4 282.225	CHICAGO APP CON 119.0 292.125	O'HARE TOWER 121.15 348.0	GND CON (TWR CENTER) 121.75 (CBND) 118.05 (TWR SOUTH) 226.675 (ALL TWRS)
--------------------------------	---	-------------------------------------	---



NORDL I-OYG (25.8) RADAR	KOOSS I-OYG (22.7) RADAR	SIKLR I-OYG (19.5) RADAR	MUELL I-OYG (16.4) RADAR	FFRAN INT I-OYG (13.3) RADAR	EZELL INT I-OYG (4.8) RADAR	MIETH INT I-OYG (10.1) RADAR	RANDI INT I-OYG (1.9) RADAR	DEERE OBK R-097	1200	4000	hdg 037°	1200	4000	DEERE	VGSi and ILS glidepath not coincident (VGSi Angle 3.00/TCH 72).	
															9000	8000
3.1 NM	3.1 NM	3.1 NM	3.1 NM	3.1 NM	5.3 NM	2.8 NM	0.9	1.1	0.1							
CATEGORY		A		B		C		D								
S-ILS 9C		873/18		200 (200-1/2)												
S-LOC 9C		1140/24		467 (500-1/2)		1140/50		467 (500-1)								



EC-3, 09 JUL 2026 to 06 AUG 2026

EC-3, 09 JUL 2026 to 06 AUG 2026