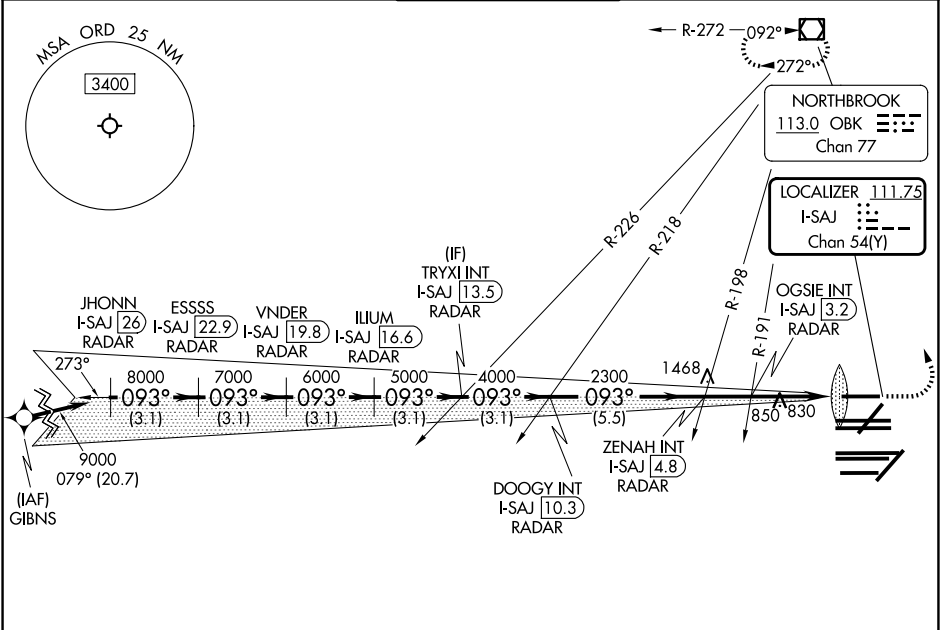


| | | |
|--|------------------------|--|
| LOC/DME I-SAJ 111.75 Chan 54 (Y) | APP CRS 093° | Rwy Ldg 7500 TDZE 668 Apt Elev 680 |
|--|------------------------|--|

ILS or LOC RWY 9L

CHICAGO O'HARE INTL (ORD)

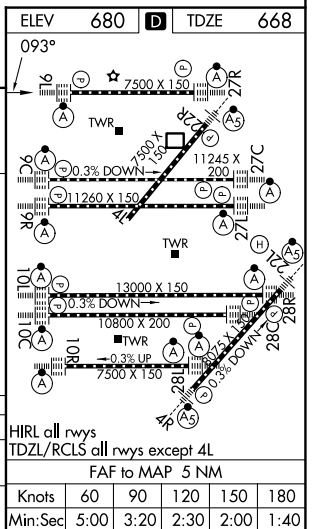
| | | | | | |
|--|---|-------------------------------------|---|---|--|
| RNAV-1 GPS or RADAR required for procedure entry. RADAR or DME required. | | ALSF-2 | | MISSED APPROACH: Climb to 1100 then climbing left turn to 4000 direct OBK VOR/DME and hold, continue climb-in-hold to 4000. | |
| Simultaneous approach authorized. | | | | | |
| D-ATIS 135.4 282.225 | CHICAGO APP CON 119.0 292.125 | O'HARE TOWER 128.15 348.0 | GND CON (TWR CENTER) 124.125 (TWR NORTH) 121.75 (OBND) (TWR SOUTH) 121.9 (IBND) | | |
| | | | 226.675 (ALL TWRs) | | |



EC-3, 09 JUL 2026 to 06 AUG 2026

EC-3, 09 JUL 2026 to 06 AUG 2026

| | | | | | | | | | |
|----------------------|------------------------|------------------------|------------------------|----------------------------|---------------------------|----------------------------|---------------------------|-----------------------|-----------|
| JHONN I-SAJ 26 RADAR | ESSSS I-SAJ 22.9 RADAR | VNDER I-SAJ 19.8 RADAR | ILIUM I-SAJ 16.6 RADAR | TRYXI INT I-SAJ 13.5 RADAR | ZENAH INT I-SAJ 4.8 RADAR | DOOGY INT I-SAJ 10.3 RADAR | OGSIE INT I-SAJ 3.2 RADAR | I-SAJ DME ANTENNA 1.1 | I-SAJ 0.2 |
| 3.1 NM | 3.1 NM | 3.1 NM | 3.1 NM | 3.1 NM | 5.5 NM | 1.6 NM | 2.2 NM | 1.1 NM | 0.1 NM |
| CATEGORY | | A | | B | | C | | D | |
| S-ILS 9L | | 868/18 | | 200 (200-1/2) | | | | | |
| S-LOC 9L | | 1100/24 | | 432 (500-1/2) | | 1100/40 | | 432 (500-3/4) | |



HIRL all rwys
TDZL/RCLS all rwys except 4L

FAF to MAP 5 NM

| | | | | | |
|---------|------|------|------|------|------|
| Knots | 60 | 90 | 120 | 150 | 180 |
| Min:Sec | 5:00 | 3:20 | 2:30 | 2:00 | 1:40 |