

LOC/DME I-JAV 110.5	APP CRS 093°	Rwy Ldg 11260 TDZE 668 Apt Elev 680
Chan 42		

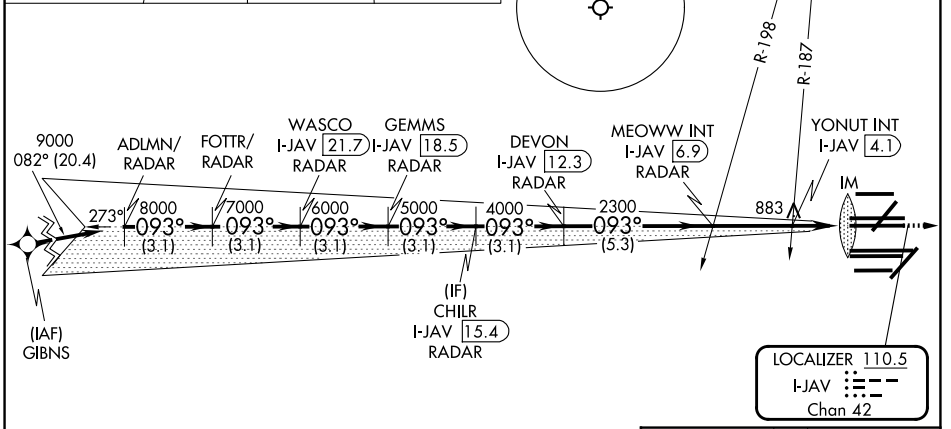
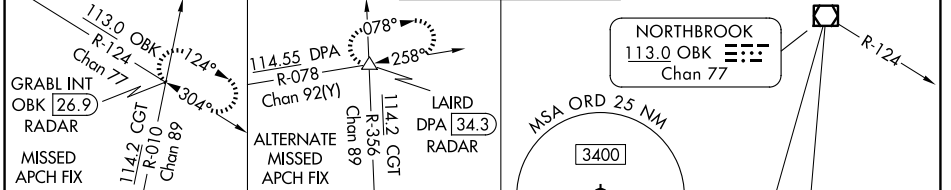
ILS or LOC RWY 9R

CHICAGO O'HARE INTL (ORD)

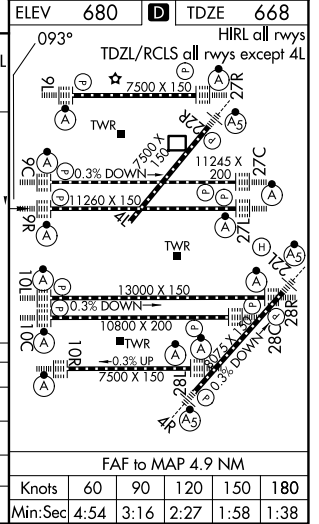
RNP APCH - GPS. From GIBNS.
DME or RADAR required. RADAR required for procedure entry at GIBNS.
Simultaneous approach authorized.
For inop ALS, increase S-LOC 9R Cat C/D visibility to 2 SM.

ALS-F-2
MISSED APPROACH: Climb to 1200 then climb to 4000 on heading 085° and OBK VOR/DME R-124 to GRABL INT/OBK 26.9 DME/RADAR and hold.

D-ATIS 135.4 282.225	CHICAGO APP CON 119.0 292.125	O'HARE TOWER 126.9 348.0	GND CON (TWR CENTER) 124.125 (TWR NORTH) 118.05 (TWR SOUTH) 226.675 (ALL TWRS)	(TWR CENTER) 121.75 (OBND) 121.9 (IBND)
--------------------------------	---	------------------------------------	--	---



	VGSI and ILS glidepath not coincident (VGSI Angle 3.00/TCH 76).				1200	4000	OBK R-124	GRABL INT
	ADLMN/RADAR	FOTTR/RADAR	WASCO I-JAV 21.7	CHILR I-JAV 15.4	MEOWW INT I-JAV 6.9	YONUT INT I-JAV 4.1		
	9000	8000	7000	6000	5000	4000	2300	1380
	3.1 NM	3.1 NM	3.1 NM	3.1 NM	3.1 NM	5.3 NM	2.8 NM	1.0 1.1 0.1
CATEGORY	A		B		C		D	
S-ILS 9R			868/18		200 (200-½)			
S-LOC 9R	1380/24		712 (700-½)		1380-1½		712 (700-1½)	
YONUT FIX MINIMUMS (DUAL VOR RECEIVERS OR DME REQUIRED)								
S-LOC 9R	1120/24		452 (500-½)		1120/45		452 (500-¾)	



EC-3, 09 JUL 2026 to 06 AUG 2026

EC-3, 09 JUL 2026 to 06 AUG 2026