

# ILS PRM RWY 28C (CLOSE PARALLEL) CHICAGO O'HARE INTL (ORD)

LOC/DME I-VZE <b>108.95</b> Chan <b>26 (Y)</b>	APP CRS <b>273°</b>	Rwy Ldg <b>10800</b> TDZE <b>651</b> Apt Elev <b>680</b>
--	------------------------	--

Aircraft not GPS equipped - RADAR required for procedure entry. DME or RADAR required.  
From VOGLR: RNAV 1-GPS required.

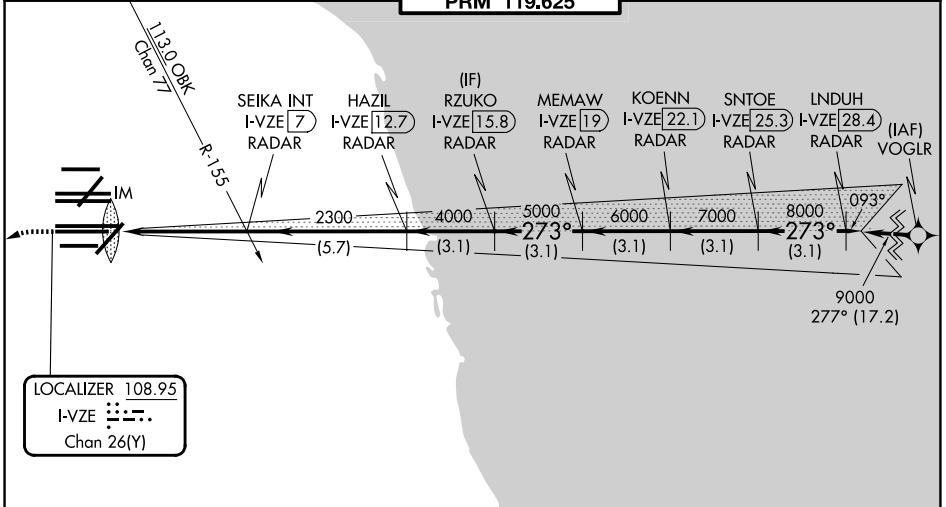
ALSF-2



MISSED APPROACH: Climb to 1100 then climbing left turn to 4000 on heading 215° and DPA VOR/DME R-082 to DPA VOR/DME and hold.

Simultaneous approach authorized. Use of FD or AP required during simultaneous operations. Dual VHF comm required. See additional requirements on AAUP.

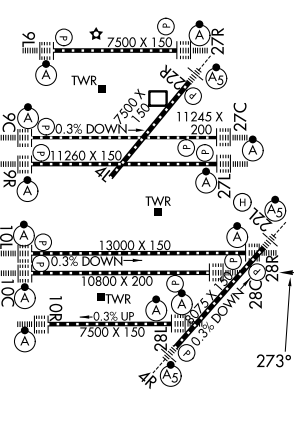
D-ATIS <b>135.4 282.225</b>	CHICAGO APP CON <b>119.0 292.125</b>	O'HARE TOWER <b>120.75 348.0</b> <b>PRM 119.625</b>	GND CON (TWR CENTER) <b>124.125</b> (TWR NORTH) <b>121.75</b> (O/BND) <b>118.05</b> (TWR SOUTH) <b>121.9</b> (I/BND) <b>226.675</b> (ALL TWRS)
--------------------------------	---	---	---



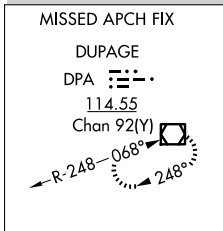
EC-3, 09 JUL 2026 to 06 AUG 2026

EC-3, 09 JUL 2026 to 06 AUG 2026

ELEV <b>680</b>	<b>D</b>	TDZE <b>651</b>
-----------------	----------	-----------------



HIRL all rwys  
TDZL/RCLS all rwys except 4L



1100	4000	DPA R-082	DPA	RZUKO I-VZE 15.8 RADAR	KOENN I-VZE 22.1 RADAR	LNDUH I-VZE 28.4 RADAR	
hdg 215°				SEIKA INT I-VZE 7 RADAR	MEMAW I-VZE 19 RADAR	SNTOE I-VZE 25.3 RADAR	
				HAZIL I-VZE 12.7 RADAR			
				2300	4000	5000	
				2300	6000	7000	
						8000	
						9000	
						GS 3.00°	
						TCH 55	
						VGSI and ILS glidepath not coincident (VGSI Angle 3.00/TCH 80).	
	0.1	4.9 NM	5.7 NM	3.1 NM	3.1 NM	3.1 NM	3.1 NM
CATEGORY	A		B		C		D
S-ILS 28C			851/18		200 (200-1/2)		