

LOC/DME I-HZJ 110.75 Chan 44 (Y)	APP CRS 094°	Rwy Ldg TDZE Apt Elev	7500 680 680
---	------------------------	-----------------------------	---

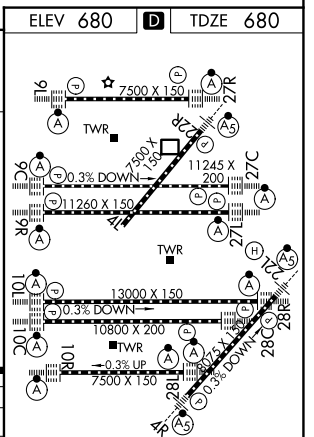
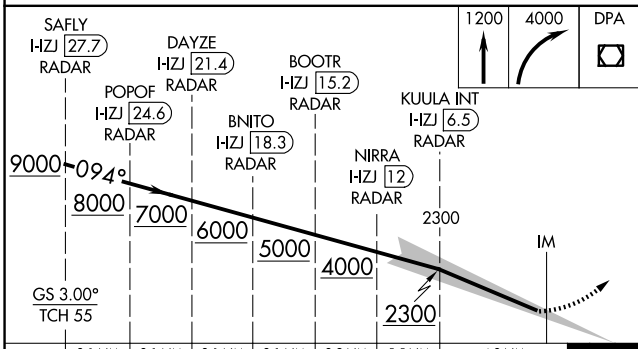
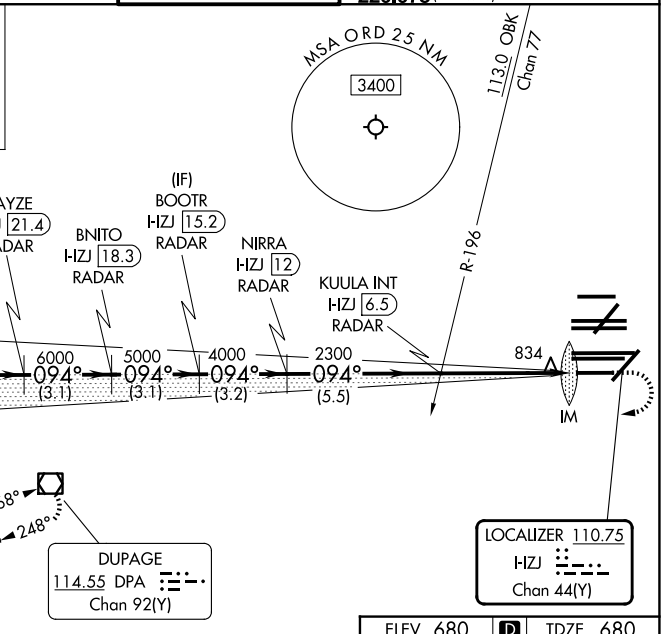
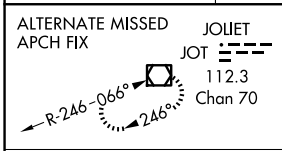
ILS Z RWY 10R (SA CAT I)

CHICAGO O'HARE INTL (ORD)

RNP APCH - GPS. From GIBNS.
 DME or RADAR required. RADAR required for procedure entry at GIBNS.
 Simultaneous approach authorized. Requires specific OPSPEC, MSPEC, or LOA approval.

ALSF-2
 MISSED APPROACH: Climb to 1200 then climbing right turn to 4000 direct DPA VOR/DME and hold.

D-ATIS 135.4 282.225	CHICAGO APP CON 119.0 292.125	O'HARE TOWER 133.0 348.0	GND CON (TWR CENTER) 124.125 (TWR NORTH) 118.05 (TWR SOUTH) 226.675 (ALL TWRs)	(TWR CENTER) 121.75 (OBND) 121.9 (IBND)
--------------------------------	---	------------------------------------	--	---



CATEGORY	A	B	C	D
S-ILS 10R	RA 165/14		150 DA 830	

SA CATEGORY I ILS-SPECIAL AIRCREW & AIRCRAFT CERTIFICATION REQUIRED

HIRL all rwys
 TDZL/RCLS all rwys except 4L

EC-3, 09 JUL 2026 to 06 AUG 2026

EC-3, 09 JUL 2026 to 06 AUG 2026