

LOC/DME I-HZJ 110.75 Chan 44 (Y)	APP CRS 094°	Rwy Ldg 7500 TDZE 680 Apt Elev 680
---	------------------------	--

ILS Z or LOC Z RWY 10R

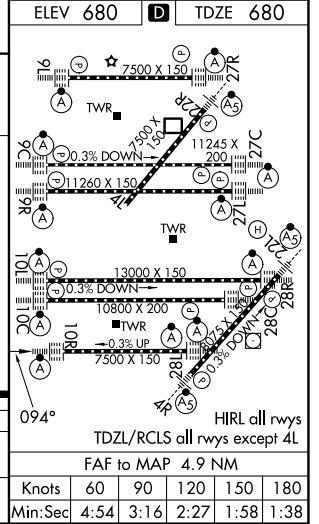
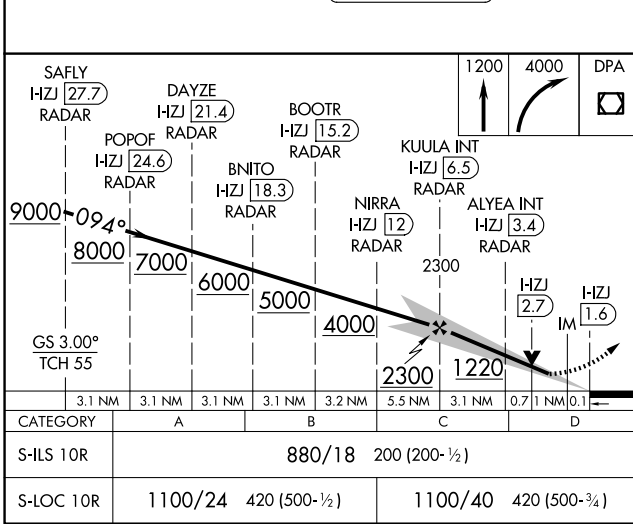
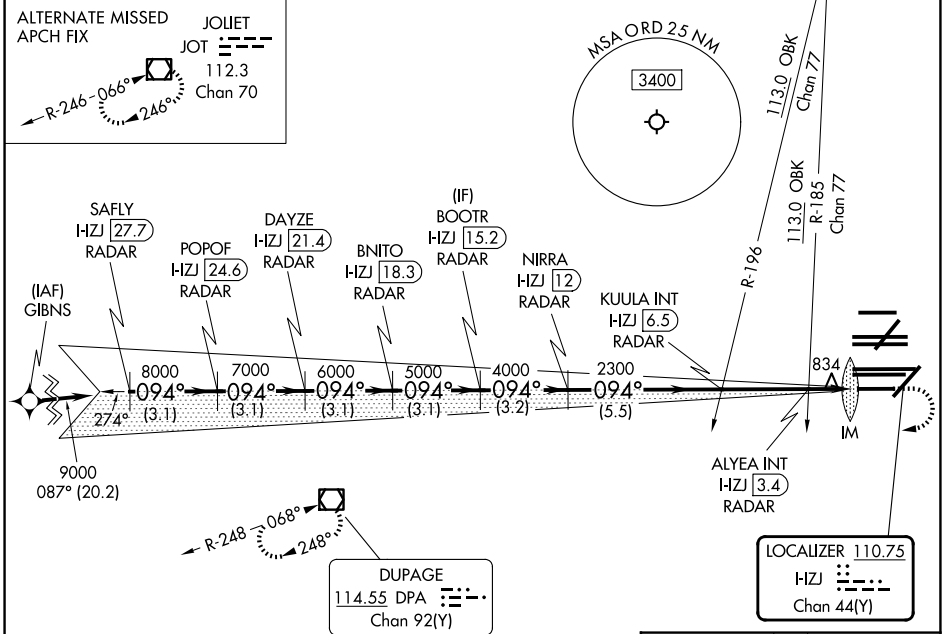
CHICAGO O'HARE INTL (ORD)

RNP APCH - GPS. From GIBNS.
DME or RADAR required. RADAR required for procedure entry at GIBNS.
Simultaneous approach authorized.
For inop ALS, increase S-LOC 10R Cat C and D visibility to RVR 6000.



MISSED APPROACH: Climb to 1200 then climbing right turn to 4000 direct DPA VOR/DME and hold.

D-ATIS 135.4 282.225	CHICAGO APP CON 119.0 292.125	O'HARE TOWER 133.0 348.0	GND CON (TWR CENTER) 124.125 (TWR NORTH) 118.05 (TWR SOUTH) 226.675 (ALL TWRS)	121.75 (OBND) 121.9 (IBND)
--------------------------------	---	------------------------------------	--	---



EC-3, 09 JUL 2026 to 06 AUG 2026

EC-3, 09 JUL 2026 to 06 AUG 2026