

WAAS CH 48904 W10A	APP CRS 093°	Rwy Ldg 12246 TDZE 672 Apt Elev 680
--	------------------------	--

RNAV (GPS) RWY 10L

CHICAGO O'HARE INTL (ORD)

RADAR required for procedure entry: RNP APCH.

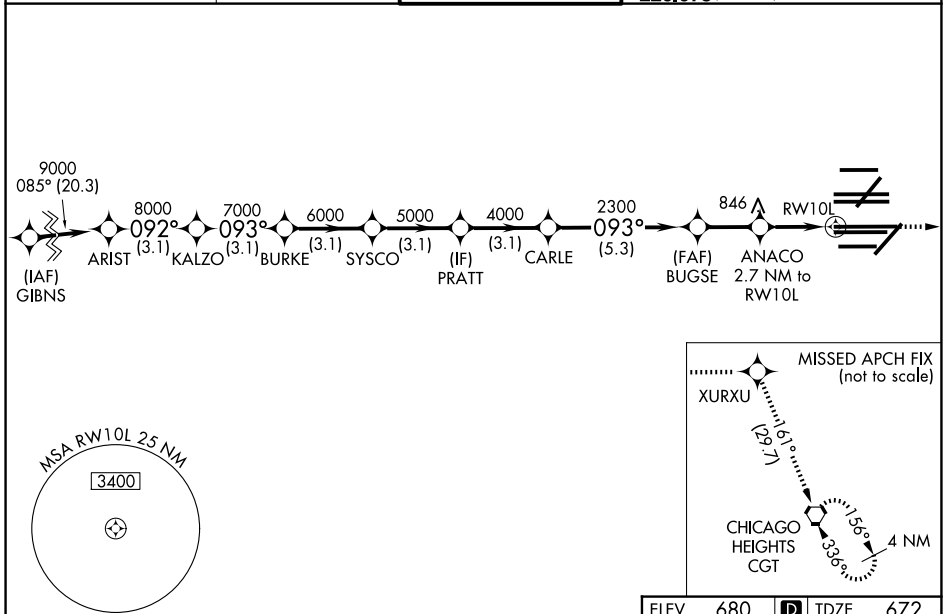
▼ For uncompensated Baro-VNAV systems, LNAV/VNAV NA below -19°C or above 54°C. Simultaneous approach authorized. LNAV procedure NA during simultaneous operations. Use of FD or AP providing RNAV track guidance required during simultaneous operations.

ALSF-2



MISSED APPROACH: Climb to 4000 direct XURXU and on track 161° to CGT VORTAC and hold.

D-ATIS 135.4 282.225	CHICAGO APP CON 119.0 292.125	O'HARE TOWER 132.7 348.0	GND CON (TWR NORTH) 124.125 (TWR SOUTH) 118.05 (ALL TWRs) 226.675	(TWR CENTER) 121.75 (OBND) (IBND) 121.9
--------------------------------	---	------------------------------------	---	--



EC-3, 09 JUL 2026 to 06 AUG 2026

EC-3, 09 JUL 2026 to 06 AUG 2026

VGSIs and RNAV glidepath not coincident (VGSIs Angle 3.00/TCH 74).		4000	XURXU	tr 161°	CGT			
ARIST	KALZO	BURKE	SYSCO	PRATT	CARLE	BUGSE	ANACO	RWY 10L
9000	8000	7000	6000	5000	4000	2300	2300	1580
GP 3.00°	TCH 56						* 1.2 NM to RWY 10L	
CATEGORY	A	B	C	D				
LPV DA	872/18		200 (200-½)					
LNAV/VNAV DA	1062/35		390 (400-¾)					
LNAV MDA	1120/24	448 (500-½)	1120/45	448 (500-¾)				

