


WAAS CH 50228 W22B	APP CRS 225°	Rwy Ldg 8075 TDZE 654 Apt Elev 680
--	------------------------	---

RNAV (GPS) RWY 22L

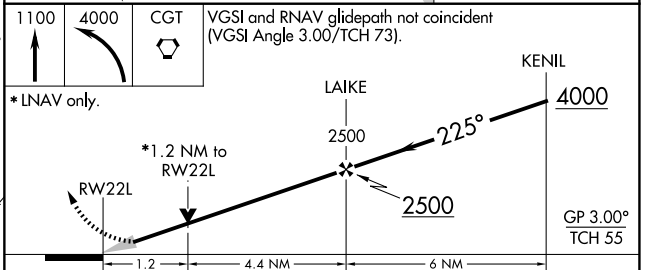
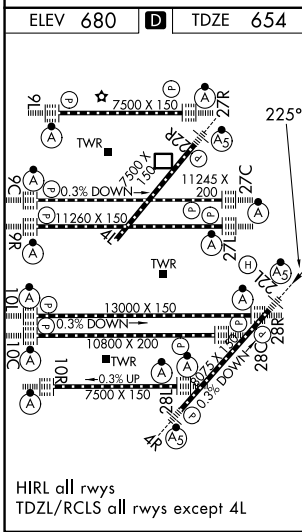
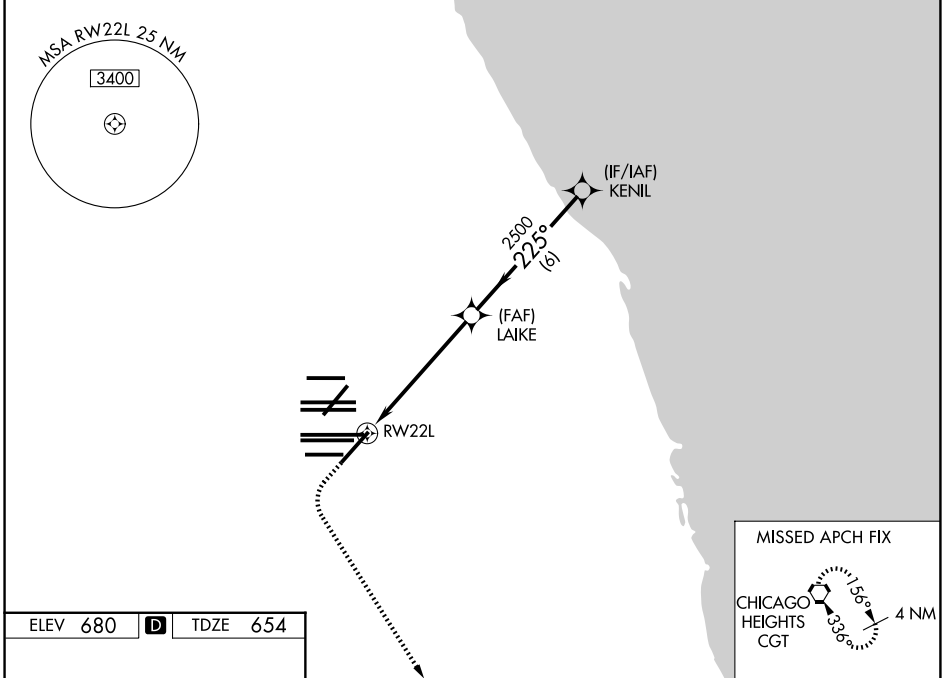
CHICAGO O'HARE INTL (ORD)

⚠ For uncompensated Baro-VNAV systems, LNAV/VNAV NA below -19°C (-2°F) or above 54°C (130°F). Simultaneous approach authorized with Rwy 22R. DME/DME RNP-0.3 NA. LNAV procedure NA during simultaneous operations. Use of FD or AP providing RNAV track guidance required during simultaneous operations.

MALSR 

MISSED APPROACH: Climb to 1100 then climbing left turn to 4000 direct CGT VORTAC and hold.

D-ATIS 135.4 282.225	CHICAGO APP CON 119.0 292.125	O'HARE TOWER 120.75 348.0	GND CON (TWR NORTH) 124.125 (TWR SOUTH) 118.05 (ALL TWRS) 226.675	(TWR CENTER) 121.75 (OBND) 121.9 (IBND)
--------------------------------	---	-------------------------------------	---	---



	1100	4000	CGT	VGSI and RNAV glidepath not coincident (VGSI Angle 3.00°/TCH 73).
*LNAV only.				
	RW22L	LAIKE	KENIL	4000
		2500		
		2500		
	1.2	4.4 NM	6 NM	
				GP 3.00° TCH 55
CATEGORY	A	B	C	D
LPV DA		854/18	200 (200-½)	
LNAV/VNAV DA		1066/45	412 (400-¾)	
LNAV MDA	1120/24	466 (500-½)	1120/50	466 (500-1)
CIRCLING	1220-1	540 (600-1)	1220-1½ 540 (600-1½)	1460-2½ 780 (800-2½)

EC-3, 09 JUL 2026 to 06 AUG 2026

EC-3, 09 JUL 2026 to 06 AUG 2026