

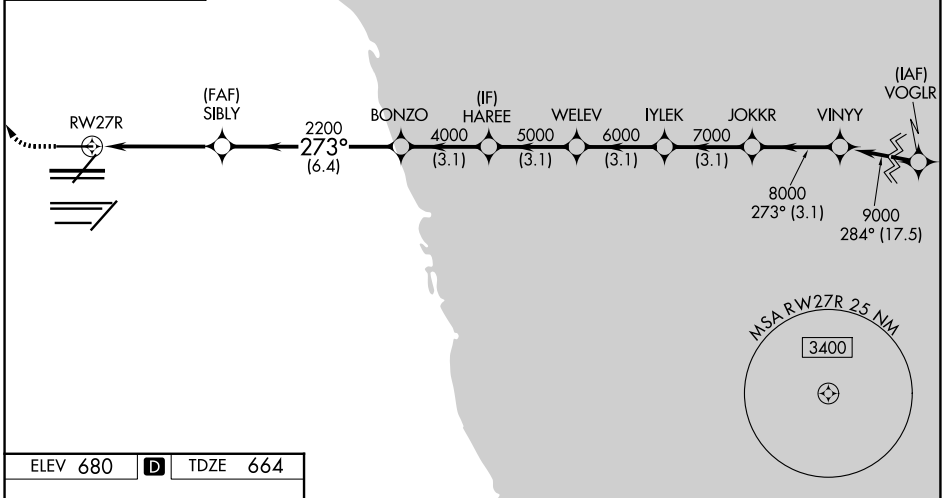
WAAS CH 69508 W27B	APP CRS 273°	Rwy Ldg TDZE 664 Apt Elev 680
--	------------------------	---

RNAV (GPS) RWY 27R

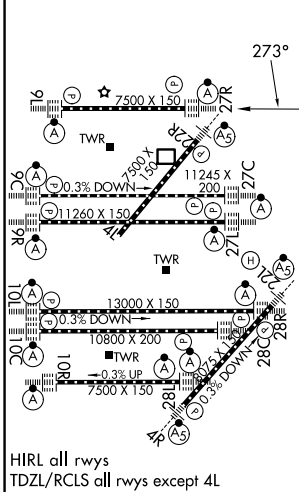
CHICAGO O'HARE INTL (ORD)

RNP APCH. RADAR required for procedure entry.	ALSF-2	MISSED APPROACH: Climb to 1100 then climbing right turn to 4000 direct OBK VOR/DME and hold, continue climb-in-hold to 4000.
<p>Simultaneous approach authorized. LNAV procedure NA during simultaneous operations. Use of FD or AP providing RNAV track guidance required during simultaneous operations. For uncompensated Baro-VNAV systems, procedure NA below -1°C or above 54°C.</p>		

D-ATIS 135.4 282.225	CHICAGO APP CON 119.0 292.125	O'HARE TOWER 128.15 348.0	GND CON (TWR NORTH) 124.125 (TWR SOUTH) 118.05 226.675 (ALL TWRs)	(TWR CENTER) 121.75 (OBND) (IBND) 121.9
--------------------------------	---	-------------------------------------	---	--



ELEV 680	D	TDZE 664
----------	----------	----------



1100	4000	OBK					
* LNAV only.							
* 1.3 NM to RWY27R							
1.3	3.4	6.4 NM	3.1 NM	3.1 NM	3.1 NM	3.1 NM	3.1 NM
CATEGORY	A	B	C	D			
LPV DA	864/18		200 (200-½)				
LNAV/VNAV DA	961/24		297 (300-½)				
LNAV MDA	1120/24 456 (500-½)		1120/45 456 (500-¾)				

EC-3, 09 JUL 2026 to 06 AUG 2026

EC-3, 09 JUL 2026 to 06 AUG 2026