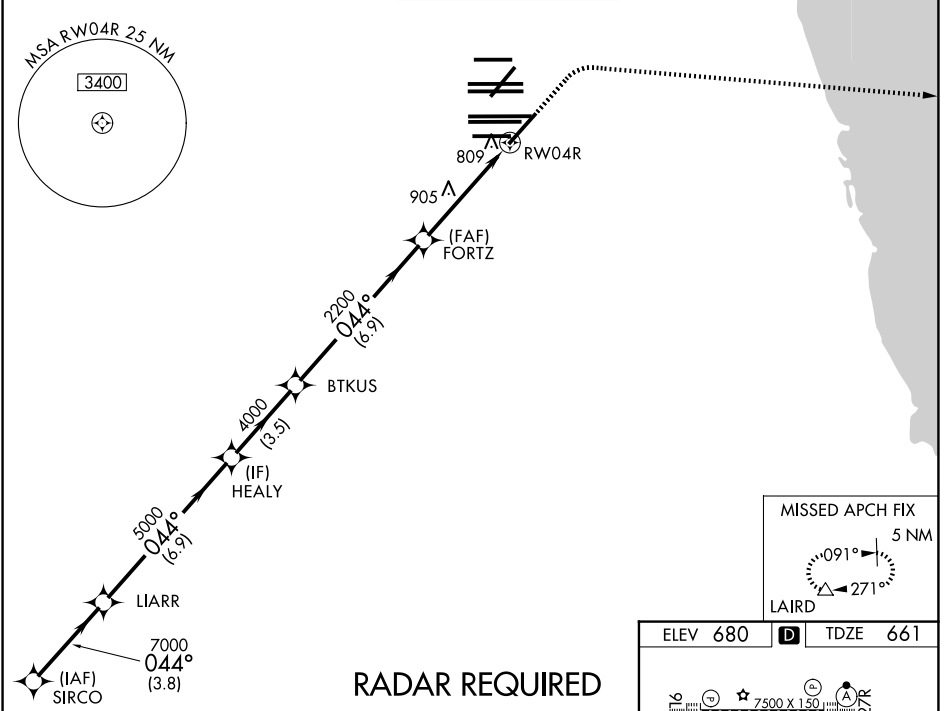


WAAS CH 81929 W04A	APP CRS 044°	Rwy Ldg 8075 TDZE 661 Apt Elev 680
--	------------------------	---

RNAV (GPS) RWY 4R

CHICAGO O'HARE INTL (ORD)

RNP APCH - GPS.		MALSR	MISSED APPROACH: Climb to 1200 then climbing right turn to 4000 direct LAIRD and hold, continue climb-in-hold to 4000.
For uncompensated Baro-VNAV systems, LNAV/VNAV NA below -22°C or above 39°C.			
D-ATIS 135.4 282.225	CHICAGO APP CON 119.0 292.125	O'HARE TOWER 120.75 348.0	GND CON (TWR CENTER) 124.125 (TWR NORTH) 121.75 (OBND) 118.05 (TWR SOUTH) 121.9 (IBND) 226.675 (ALL TWRS)



EC-3, 09 JUL 2026 to 06 AUG 2026

EC-3, 09 JUL 2026 to 06 AUG 2026

RADAR REQUIRED

SIRCO	LIARR	HEALY	BTKUS	FORTZ	LAIRD
8000	7000	5000	4000	2200	1200 4000
GP 3.00° TCH 52	044°				
3.8 NM	6.9 NM	3.5 NM	6.9 NM	3.3 NM	1.4 NM
CATEGORY	A	B	C	D	
LPV DA		861/18	200 (200-½)		
LNAV/VNAV DA		990/32	329 (400-¾)		
LNAV MDA	1160/24	499 (500-½)	1160/50	499 (500-1)	
CIRCLING	1220-1	540 (600-1)	1220-1½ 540 (600-1½)	1460-2½ 780 (800-2½)	

* INAV only.
*1.4 NM to RW04R

