

WAAS CH 58143 W09D	APP CRS 093°	Rwy Ldg TDZE Apt Elev	11245 673 680
--	------------------------	-----------------------------	--

RNAV (GPS) RWY 9C

CHICAGO O'HARE INTL (O.R.D)

RNP APCH.

▼ Simultaneous approach authorized. LNAV procedure NA during simultaneous operations. Use of FD or AP required during simultaneous operations. For uncompensated Baro-VNAV systems, LNAV/VNAV NA below -19°C or above 54°C. For inop ALS, increase LNAV/VNAV all cats visibility to RVR 4500 and LNAV Cat C/D to 1% SM.

ALSF-2

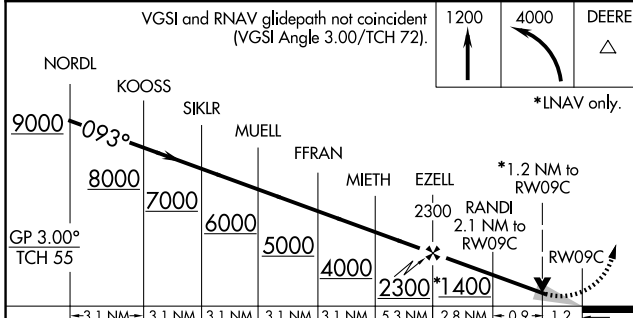
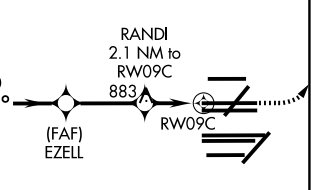
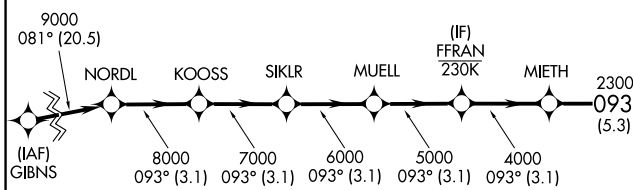
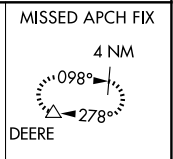
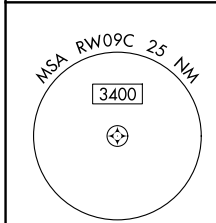
MISSED APPROACH: Climb to 1200 then climbing left turn to 4000 direct DEERE and hold.

D-ATIS
135.4 282.225

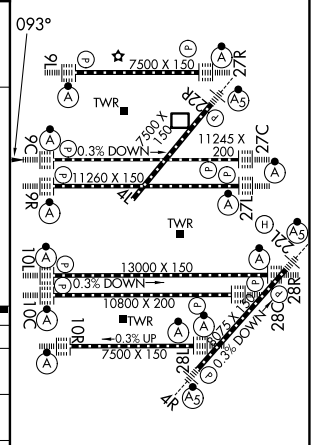
CHICAGO APP CON
119.0 292.125

O'HARE TOWER
121.15 348.0

124.125 GND CON (TWR CENTER)
118.05 (TWR NORTH) **121.75** (OBND)
226.675 (TWR SOUTH) **121.9** (IBND)
(ALL TWRS)



ELEV 680 TDZE 673



CATEGORY	A	B	C	D
LPV DA		873/18	200 (200-½)	
LNAV/VNAV DA		976/24	303 (300-½)	
LNAV MDA	1140/24	467 (500-½)	1140/50	467 (500-1)

HIRL all rwys
TDZL/RCLS all rwys except 4L

EC-3, 09 JUL 2026 to 06 AUG 2026

EC-3, 09 JUL 2026 to 06 AUG 2026