

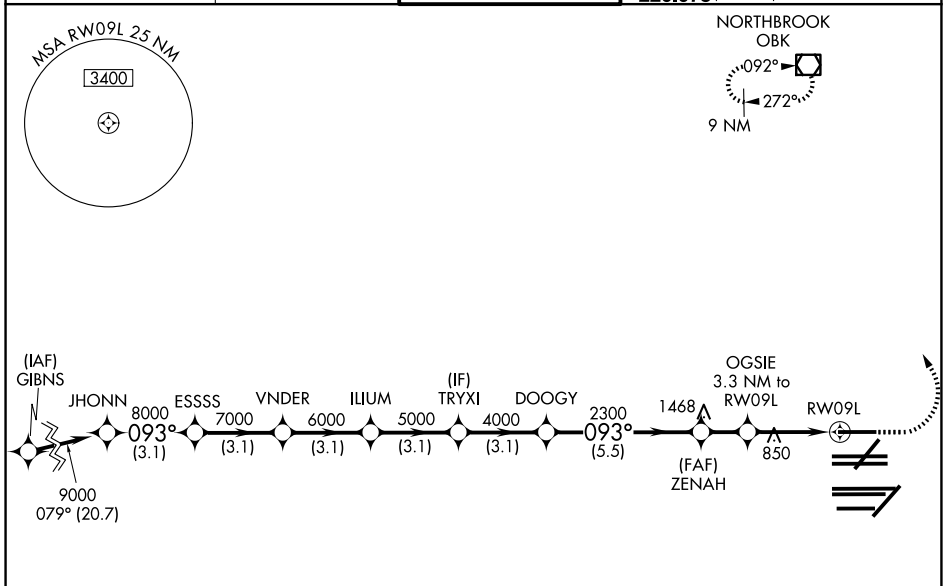
WAAS CH 99508 W09B	APP CRS 093°	Rwy Ldg 7500 TDZE 668 Apt Elev 680
--	------------------------	---

RNAV (GPS) RWY 9L

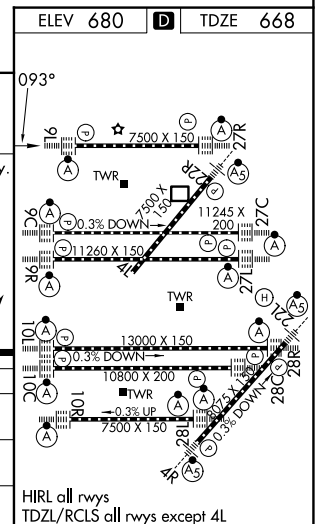
CHICAGO O'HARE INTL (ORD)

RADAR required for procedure entry. RNP APCH.		ALSIF-2 	MISSED APPROACH: Climb to 1100 then climbing left turn to 4000 direct OBK VOR/DME and hold, continue climb-in-hold to 4000.
Simultaneous approach authorized. LNAV procedure NA during simultaneous operations. Use of FD or AP providing RNAV track guidance required during simultaneous operations. For uncompensated Baro-VNAV systems, procedure NA below -19°C or above 54°C.			

D-ATIS 135.4 282.225	CHICAGO APP CON 119.0 292.125	O'HARE TOWER 128.15 348.0	GND CON (TWR CENTER) 124.125 (TWR NORTH) 118.05 (TWR SOUTH) 226.675 (ALL TWRS)	121.75 (OBND) 121.9 (IBND)
--------------------------------	---	-------------------------------------	--	---



JHONN	ESSSS	VNDER	ILIUM	TRYXI	DOOGY	ZENAH	OGSIE	RWY 9L
9000	8000	7000	6000	5000	4000	2300	*1760	
GP 3.00° TCH 55								
3.1 NM	3.1 NM	3.1 NM	3.1 NM	3.1 NM	5.5 NM	1.7 NM	2.1 NM	1.2 NM
CATEGORY	A		B		C		D	
LPV DA	868/18		200 (200-½)					
LNAV/VNAV DA	1034/35		366 (400-¾)					
LNAV MDA	1100/24	432 (500-½)		1100/40		432 (500-¾)		



EC-3, 09 JUL 2026 to 06 AUG 2026

EC-3, 09 JUL 2026 to 06 AUG 2026