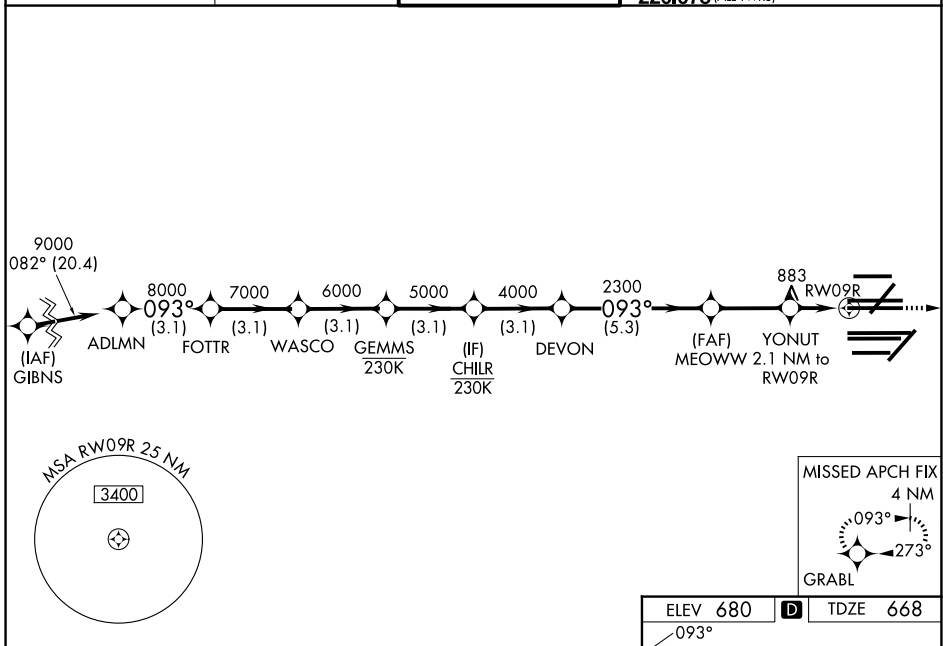


WAAS CH 78204 W09A	APP CRS 093°	Rwy Ldg 11260 TDZE 668 Apt Elev 680
--	------------------------	--

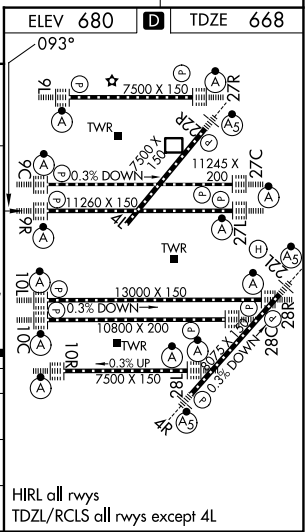
RNAV (GPS) RWY 9R

CHICAGO O'HARE INTL (ORD)

RNP APCH - GPS.		<p>Simultaneous approach authorized. LNAV procedure NA during simultaneous operations. Use of FD or AP required during simultaneous operations. For uncompensated Baro-VNAV systems, LNAV/VNAV NA below -19°C or above 54°C. For inop ALS, increase LNAV/VNAV all Cats visibility to RVR 4500. For inop ALS, increase LNAV Cats C/D visibility to 1 3/8 SM.</p>		<p>MISSED APPROACH: Climb to 4000 direct GRABL and hold.</p>	
D-ATIS 135.4 282.225	CHICAGO APP CON 119.0 292.125	O'HARE TOWER 126.9 348.0	GND CON 124.125 (TWR NORTH) 118.05 (TWR SOUTH) 226.675 (ALL TWRs)	(TWR CENTER) 121.75 (OBND) 121.9 (IBND)	



ADLMN		FOTTR		WASCO		GEMMS		CHLR		DEVON		MEOWW		YONUT		RW09R		
9000		8000		7000		6000		5000		4000		2300		1380		RW09R		
GP 3.00°		TCH 58																
3.1 NM		3.1 NM		3.1 NM		3.1 NM		3.1 NM		5.3 NM		2.8 NM		0.9		1.2 NM		
CATEGORY	A		B		C		D											
LPV DA			868/18		200 (200-1/2)													
LNAV/VNAV DA			976/24		308 (300-1/2)													
LNAV MDA	1140/24		472 (500-1/2)		1140/50		472 (500-1)											



EC-3, 09 JUL 2026 to 06 AUG 2026

EC-3, 09 JUL 2026 to 06 AUG 2026