

CHICAGO, ILLINOIS

AL-166 (FAA)

RNAV (GPS) PRM RWY 10C (CLOSE PARALLEL)

CHICAGO O'HARE INTL (ORD)

WAAS CH 81934 W10B	APP CRS 093°	Rwy Ldg 10540 TDZE 669 Apt Elev 680
--	------------------------	--

RNP APCH - GPS.

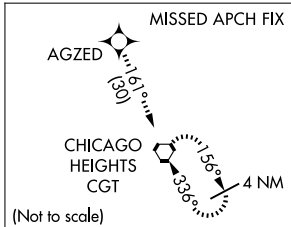
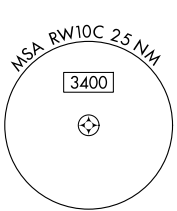
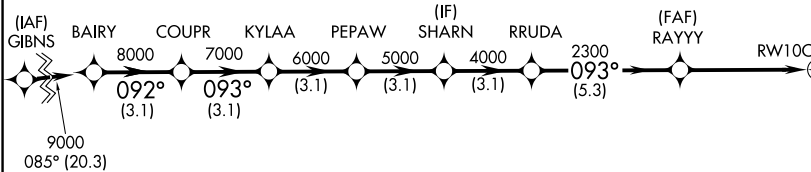
Simultaneous approach authorized. Dual VHF comm required. See additional requirements on AAUP. For uncompensated Baro-VNAV systems, LNAV/VNAV NA below -19°C or above 54°C. Rwy 10C helicopter visibility reduction below RVR 4000 NA. Use of FD or AP required during simultaneous operations.

ALSF-2

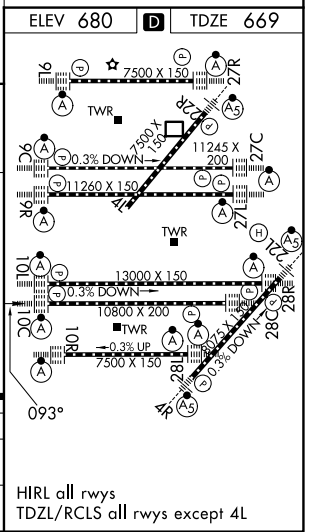
MISSED APPROACH: Climb to 4000 direct AGZED and on track 161° to CGT VORTAC and hold.

D-ATIS 135.4 282.225	CHICAGO APP CON 119.0 292.125	O'HARE TOWER 120.75 348.0 PRM 119.625	GND CON (TWR CENTER) 124.125 (TWR NORTH) 121.75 (OBND) 118.05 (TWR SOUTH) 121.9 (IBND) 226.675 (ALL TWRS)
--------------------------------	---	---	---

RADAR REQUIRED



VGSI and RNAV glidepath not coincident (VGSI Angle 3.00/TCH 75).					4000	AGZED	tr 161°	CGT
BAIRY	COUPR	KYLAA	PEPAW	SHARN	RRUDA	RAYYY	2300	RWY10C
9000	8000	7000	6000	5000	4000	2300		
GP 3.00°								
TCH 55								
	3.1 NM	3.1 NM	3.1 NM	3.1 NM	3.1 NM	5.3 NM	5 NM	
CATEGORY	A		B		C	D		
LPV DA			869/18		200 (200-½)			
LNAV/VNAV DA			1062/40		393 (400-¾)			



EC-3, 09 JUL 2026 to 06 AUG 2026

EC-3, 09 JUL 2026 to 06 AUG 2026

CHICAGO, ILLINOIS
Orig-B 25JAN24

41°59'N-87°54'W

CHICAGO O'HARE INTL (ORD)

RNAV (GPS) PRM RWY 10C (CLOSE PARALLEL)