

| | | |
|--|------------------------|--|
| WAAS CH 53639 W28B | APP CRS 273° | Rwy Ldg 10800 TDZE 651 Apt Elev 680 |
|--|------------------------|--|

CHICAGO O'HARE INTL (ORD)

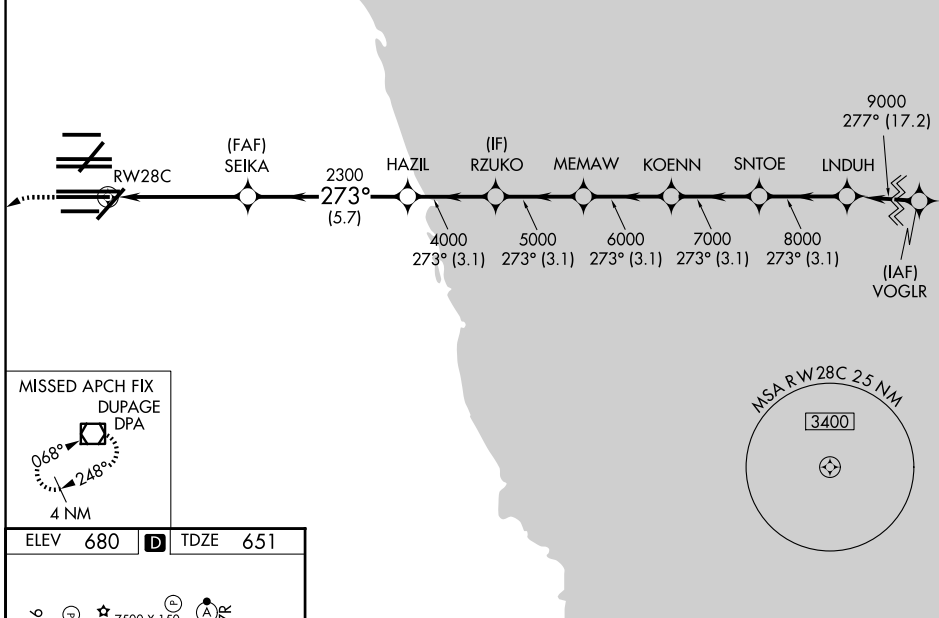
▼ For uncompensated Baro-VNAV systems, LNAV/VNAV NA below -19°C (-2°F) or above 54°C (130°F). DME/DME RNP-0.3 NA. Use of FD or AP providing RNAV track guidance required during simultaneous operations. Simultaneous approach authorized. Dual VHF comm required. See additional requirements on AAUP.

ALSF-2

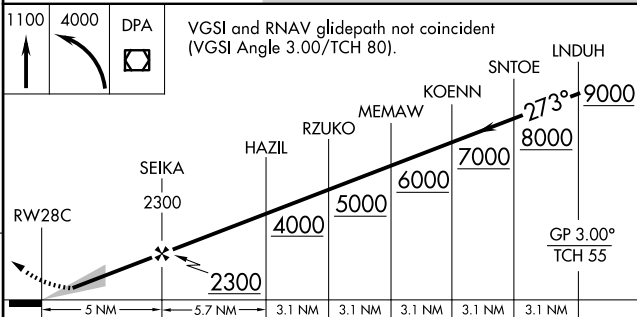
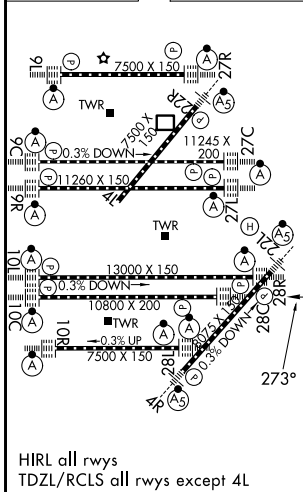
MISSED APPROACH: Climb to 1100 then climbing left turn to 4000 direct DPA VOR/DME and hold.

| | | | | |
|--------------------------------|---|---|---|--|
| D-ATIS 135.4 282.225 | CHICAGO APP CON 119.0 292.125 | O'HARE TOWER 120.75 348.0 PRM 119.625 | GND CON (TWR NORTH) 124.125 (TWR SOUTH) 118.05 226.675 (ALL TWRs) | (TWR CENTER) 121.75 (OBND) (IBND) 121.9 |
|--------------------------------|---|---|---|--|

RADAR REQUIRED



| | | |
|----------|----------|----------|
| ELEV 680 | D | TDZE 651 |
|----------|----------|----------|



| | | | | |
|--------------|---|---------|-------------|---|
| CATEGORY | A | B | C | D |
| LPV DA | | 851/18 | 200 (200-½) | |
| LNAV/VNAV DA | | 1094/50 | 443 (500-1) | |

EC-3, 09 JUL 2026 to 06 AUG 2026

EC-3, 09 JUL 2026 to 06 AUG 2026