

RNAV (GPS) PRM Y RWY 10R

(CLOSE PARALLEL)

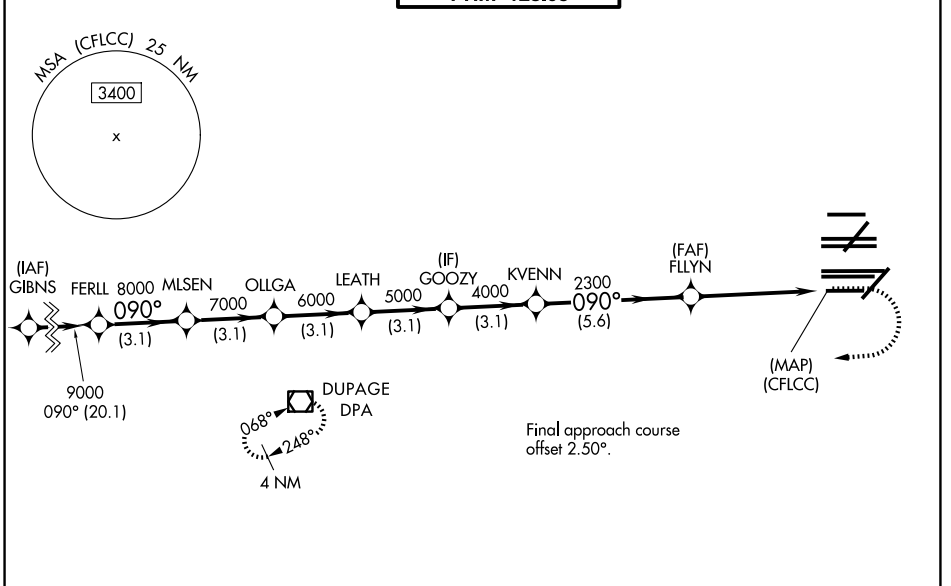
CHICAGO O'HARE INTL (ORD)

WAAS CH 77937 W10D	APP CRS 090°	Rwy Ldg TDZE Apt Elev	7500 680 680
--	------------------------	-----------------------------	---

RNP APCH.
 Simultaneous approach authorized. Dual VHF comm required. See additional requirements on AAUP. For uncompensated Baro-VNAV systems, LNAV/VNAV NA below -19°C or above 54°C. Use of FD or AP providing RNAV track guidance required during simultaneous operations. For inop ALS, increase LNAV/VNAV all Cats visibility to 1 $\frac{1}{2}$ SM.

ALSF-2
 MISSED APPROACH: Climb to 1200 then climbing right turn to 4000 direct DPA VOR/DME and hold.

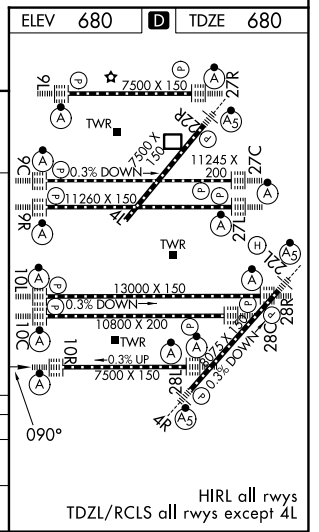
D-ATIS 135.4 282.225	CHICAGO APP CON 119.0 292.125	O'HARE TOWER 133.0 348.0 PRM 128.05	GND CON (TWR CENTER) 124.125 (TWR NORTH) 118.05 (TWR SOUTH) 226.675 (ALL TWRs)	121.75 (CBND) 121.9 (IBND)
--------------------------------	---	---	--	---



EC-3, 09 JUL 2026 to 06 AUG 2026

EC-3, 09 JUL 2026 to 06 AUG 2026

	FERLL	MLSN	OLLGA	LEATH	GOOZY	KVENN	FLLYN	(CFLCC)
	9000	8000	7000	6000	5000	4000	2300	
	3.1 NM	3.1 NM	3.1 NM	3.1 NM	3.1 NM	5.6 NM	4.9 NM	
GP 3.00 TCH 55								
CATEGORY	A	B			C		D	
LPV DA	930/24			250 (300- $\frac{1}{2}$)				
LNAV/VNAV DA	1157/50			477 (500-1)				



RNAV (GPS) PRM Y RWY 10R (CLOSE PARALLEL)

HIRL all rwys
 TDZL/RCLS all rwys except 4L