

CHICAGO, ILLINOIS

AL-166 (FAA)

RNAV (GPS) PRM Y RWY 28L

26190

(CLOSE PARALLEL)

CHICAGO O'HARE INTL (ORD)

WAAS CH 93839 W28E	APP CRS 275°	Rwy Ldg TDZE 7500 667	Apt Elev 680
--	------------------------	---	------------------------

RNP APCH. RADAR required.

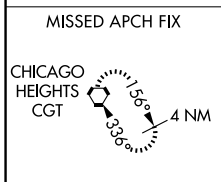
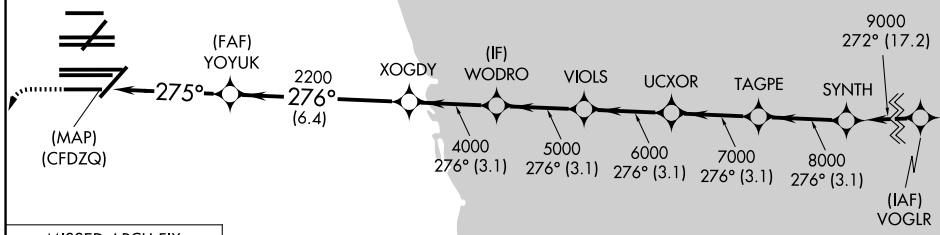
▼ For uncompensated Baro-VNAV systems, LNAV/VNAV NA below -19°C or above 54°C. Simultaneous approach authorized. Use of FD or AP required during simultaneous operations. Dual VHF comm required. See additional requirements on AAUP.

ALSIF-2

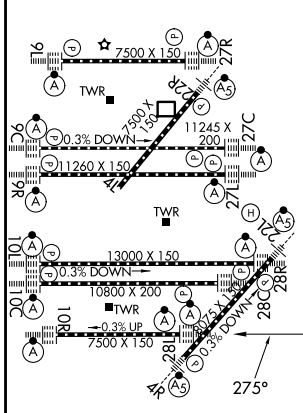
MISSED APPROACH: Climb to 1200 then climbing left turn to 4000 direct CGT VORTAC and hold.

D-ATIS 135.4 282.225	CHICAGO APP CON 119.0 292.125	O'HARE TOWER 133.0 348.0 PRM 128.05	GND CON 124.125 (TWR NORTH) 118.05 (TWR SOUTH) 226.675 (ALL TWRS)	(TWR CENTER) (OBND) 121.75 (TWR SOUTH) (IBND) 121.9
--------------------------------	---	---	---	--

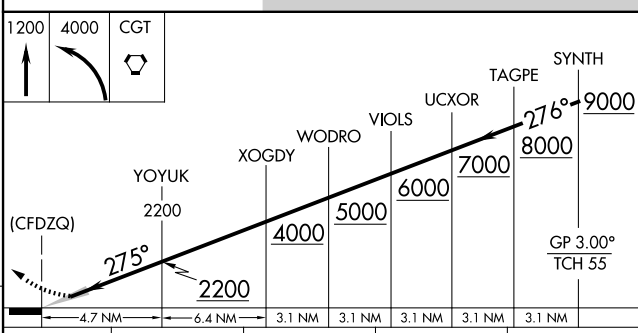
Final approach course offset 2.50°.



ELEV 680	D	TDZE 667
-----------------	----------	-----------------



HIRL all rwys
TDZL/RCLS all rwys except 4L



CATEGORY	A	B	C	D
LPV DA		917/24	250 (300-½)	
LNAV/VNAV DA		1090/40	423 (500-¾)	

CHICAGO, ILLINOIS
Orig-A 13SEP18

41°59'N-87°54'W

CHICAGO O'HARE INTL (ORD)

RNAV (GPS) PRM Y RWY 28L (CLOSE PARALLEL)

EC-3, 09 JUL 2026 to 06 AUG 2026

EC-3, 09 JUL 2026 to 06 AUG 2026