

APP CRS 273°	Rwy Ldg 11260
	TDZE 654
	Apt Elev 680

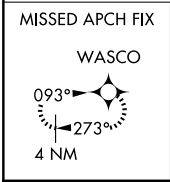
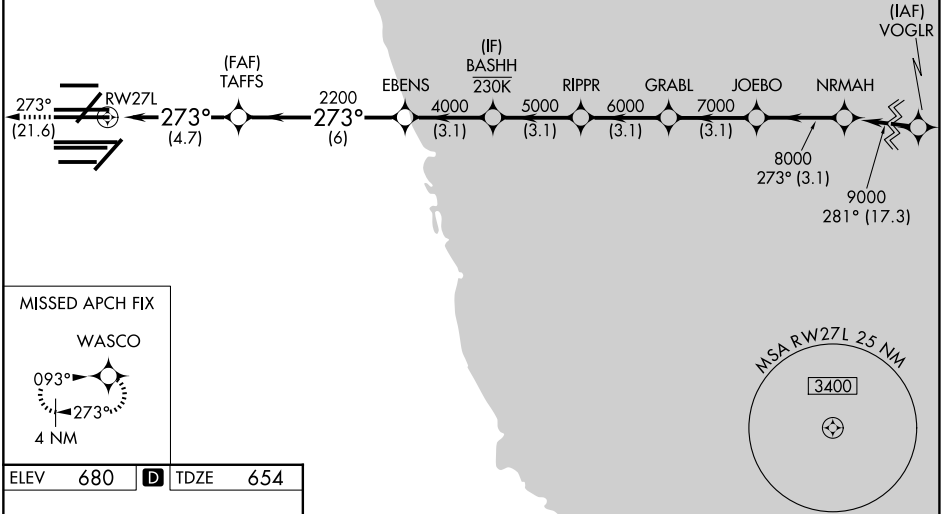
RNAV (RNP) Y RWY 27L

CHICAGO O'HARE INTL (ORD)

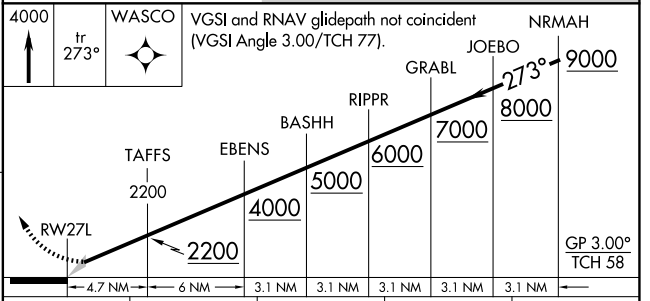
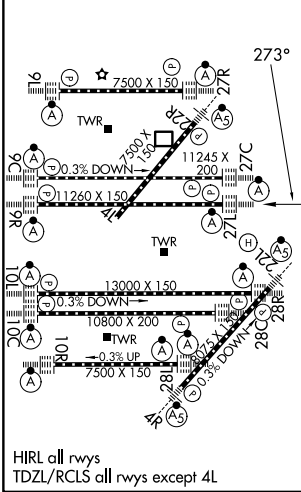
RNP AR APCH - GPS.		ALSF-2 	MISSED APPROACH: Climb to 4000 on track 273° to WASCO and hold.
Simultaneous approach authorized. Use of FD or AP required during simultaneous operations. For uncompensated Baro-VNAV systems, procedure NA below -19°C or above 54°C.			

D-ATIS 135.4 282.225	CHICAGO APP CON 119.0 292.125	O'HARE TOWER 126.9 348.0	GND CON 124.125 (TWR NORTH) 118.05 (TWR SOUTH) 226.675 (ALL TWRs)	(TWR CENTER) 121.75 (OBND) 121.9 (IBND)
--------------------------------	---	------------------------------------	---	---

RADAR REQUIRED



ELEV 680	D	TDZE 654
----------	----------	----------



CATEGORY	A	B	C	D
RNP 0.15 DA		989/26	335 (400-½)	
RNP 0.30 DA		1133/50	479 (500-1)	

AUTHORIZATION REQUIRED

EC-3, 09 JUL 2026 to 06 AUG 2026

EC-3, 09 JUL 2026 to 06 AUG 2026