

WAAS CH <b>99340</b> <b>W10E</b>	APP CRS <b>093°</b>	Rwy Ldg TDZE Apt Elev	<b>7500</b> <b>680</b> <b>680</b>
--	------------------------	-----------------------------	---

# RNAV (GPS) Z RWY 10R

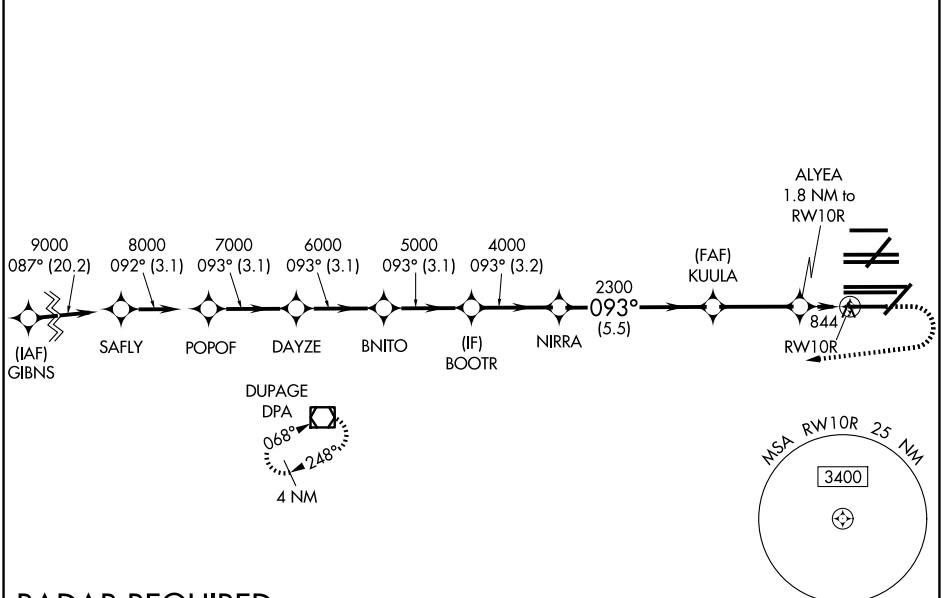
CHICAGO O'HARE INTL (ORD)

▼ For uncompensated Baro-VNAV systems, LNAV/VNAV NA below -19°C (-2°F) or above 54°C (130°F). Simultaneous approach authorized. Use of FD or AP providing RNAV track guidance required during simultaneous operations. LNAV procedure NA during simultaneous operations. DME/DME RNP-0.3 NA. For inop ALS, increase LNAV Cat C and D visibility to RVR 6000.

ALS-F-2

MISSED APPROACH: Climb to 1200 then climbing right turn to 4000 direct DPA VOR/DME and hold.

D-ATIS <b>135.4 282.225</b>	CHICAGO APP CON <b>119.0 292.125</b>	O'HARE TOWER <b>133.0 348.0</b>	GND CON (TWR NORTH) <b>124.125</b> (TWR SOUTH) <b>118.05</b> (ALL TWRS) <b>226.675</b>	(TWR CENTER) <b>121.75</b> (RBND) (TWR SOUTH) <b>121.9</b> (IBND)
--------------------------------	---	------------------------------------	---	--



EC-3, 09 JUL 2026 to 06 AUG 2026

EC-3, 09 JUL 2026 to 06 AUG 2026

## RADAR REQUIRED

SAFLY	POPOF	DAYZE	BNITO	BOOTR	NIRRA	KUULA	ALYEA	DPA
9000	8000	7000	6000	5000	4000	2300	1300	4000
3.1 NM	3.1 NM	3.1 NM	3.1 NM	3.2 NM	5.5 NM	3.1 NM	0.7 NM	1.1 NM
GP 3.00°	092°	093°	093°	093°	093°	093°	093°	093°
TCH 55								
CATEGORY	A	B	C	D				
LPV DA	881/18		201 (300-1/2)					
LNAV/VNAV DA	1122/50		442 (500-1)					
LNAV MDA	1100/24	420 (500-1/2)		1100/40	420 (500-3/4)			

