

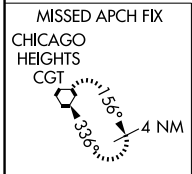
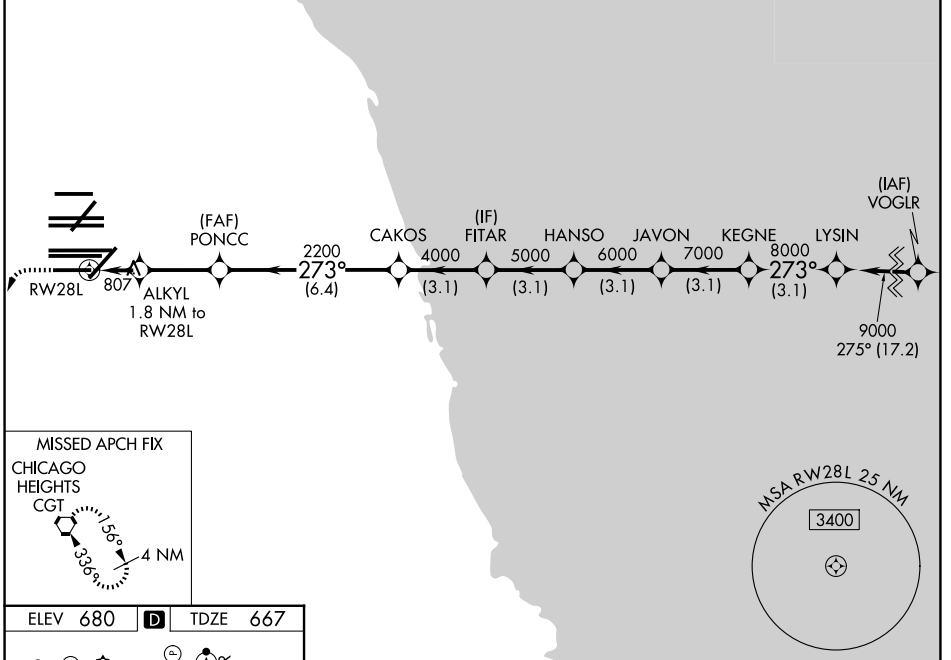
WAAS CH 65837 W28D	APP CRS 273°	Rwy Ldg TDZE Apt Elev	7500 667 680
--	------------------------	-----------------------------	---

RNAV (GPS) Z RWY 28L

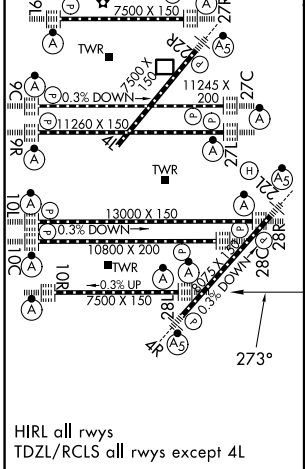
CHICAGO O'HARE INTL (ORD)

RNP APCH.	ALSIF-2	MISSED APPROACH: Climb 1200 then climbing left turn to 4000 direct CGT VORTAC and hold.
<p>Simultaneous approach authorized. LNAV procedure NA during simultaneous operations. For uncompensated Baro-VNAV systems, LNAV/VNAV NA below -19C or above 54C. Use of FD or AP required during simultaneous operations.</p>		

D-ATIS 135.4 282.225	CHICAGO APP CON 119.0 292.125	O'HARE TOWER 133.0 348.0	GND CON (TWR CENTER) 124.125 (TWR NORTH) 121.75 (OBND) 118.05 (TWR SOUTH) 121.9 (IBND) 226.675 (ALL TWRs)
--------------------------------	---	------------------------------------	---



ELEV 680	D	TDZE 667
----------	----------	----------



1200	4000	CGT						
*LNAV only.								
	ALKYL 1.8 NM to RW28L	PONCC	CAKOS	FITAR	HANSO	JAVON	KEGNE	LYSIN
	*1.1 NM to RW28L	2200	4000	5000	6000	7000	8000	9000
	RW28L							GP 3.00° TCH 55
	1.1 NM	0.7	2.9 NM	6.4 NM	3.1 NM	3.1 NM	3.1 NM	3.1 NM
CATEGORY	A		B		C		D	
LPV	DA		867/18		200 (200-1/2)			
LNAV/ VNAV	DA		1090/40		423 (500-3/4)			
LNAV	MDA		1060/24		393 (400-1/2)		1060/35 393 (400-5/8)	

EC-3, 09 JUL 2026 to 06 AUG 2026

EC-3, 09 JUL 2026 to 06 AUG 2026