

TOLEDO, OHIO

HI-ILS Y or LOC Y RWY 25

LOC/DME I-BQE 108.7 Chan 24	APCH CRS 252°	Rwy Idg 10,599 TDZE 678 Arpt Elev 684	[USAF]	EUGENE F KRANZ TOLEDO EXPRESS (KTOL)
---	-------------------------	--	--------	--------------------------------------

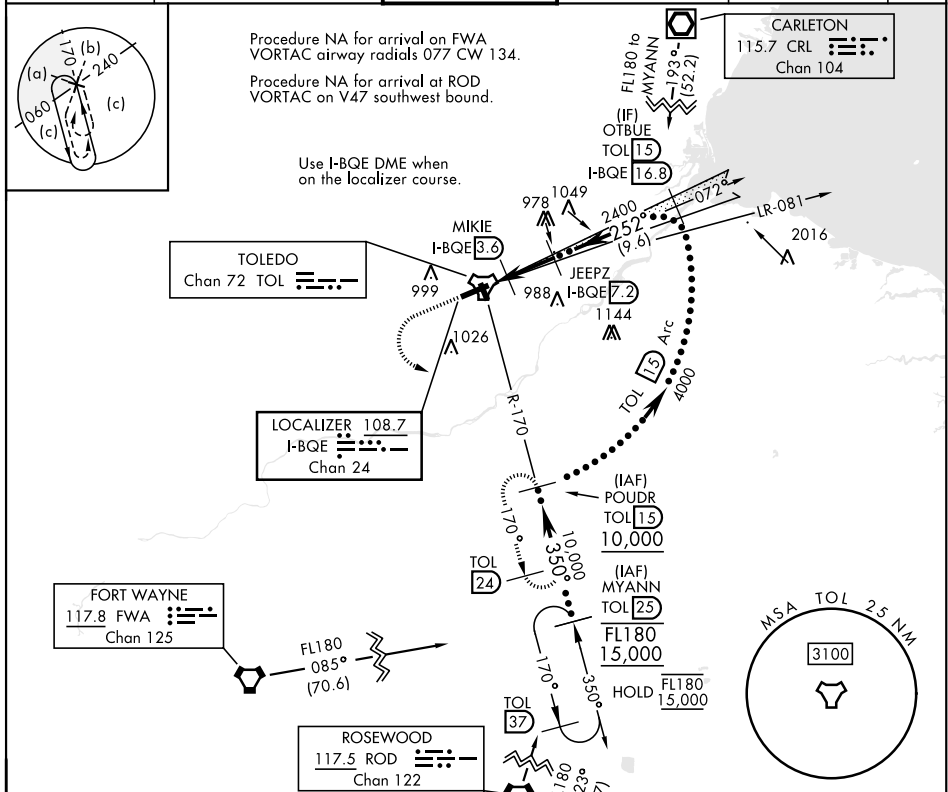
DME required

▼ * When ALS inop, increase vis to 1½ miles.

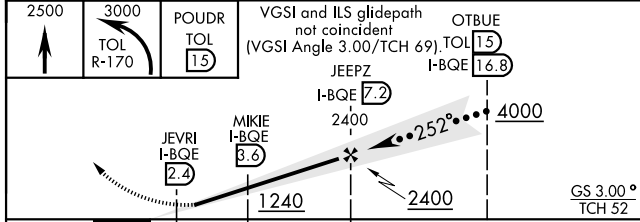
MALSRS (A5)

MISSED APPROACH: Climb to 2500 then climbing left turn to 3000 on TOL R-170 to POUDR (TOL R-170/1.5 DME) and hold.

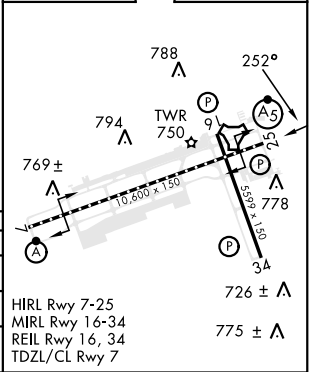
ATIS 118.75 290.225	TOLEDO APP CON 126.1 317.55	TOLEDO TOWER 118.1 285.4	GND CON 121.9 348.6	CLNC DEL 121.75 348.6	ASR
-------------------------------	---------------------------------------	------------------------------------	-------------------------------	---------------------------------	-----



EMERG SAFE ALT 100 NM 3100



ELEV	684	TDZE	678
------	-----	------	-----



CATEGORY	C	D	E
S-ILS 25	945/20	267	(300-½)
S-LOC 25 *	1200/55	522	(600-1)
CIRCLING	1300-1¾ 616 (700-1¾)	1360-2¼ 676 (700-2¼)	1360-2½ 676 (700-2½)

HIRL Rwy 7-25
MIRL Rwy 16-34
REIL Rwy 16, 34
TDZL/CL Rwy 7

TOLEDO, OHIO 41° 35'N-83° 48'W EUGENE F KRANZ TOLEDO EXPRESS (KTOL)
Amdt 6C 23JAN25

HI-ILS Y or LOC Y RWY 25

EC-2, 09 JUL 2026 to 06 AUG 2026

EC-2, 09 JUL 2026 to 06 AUG 2026