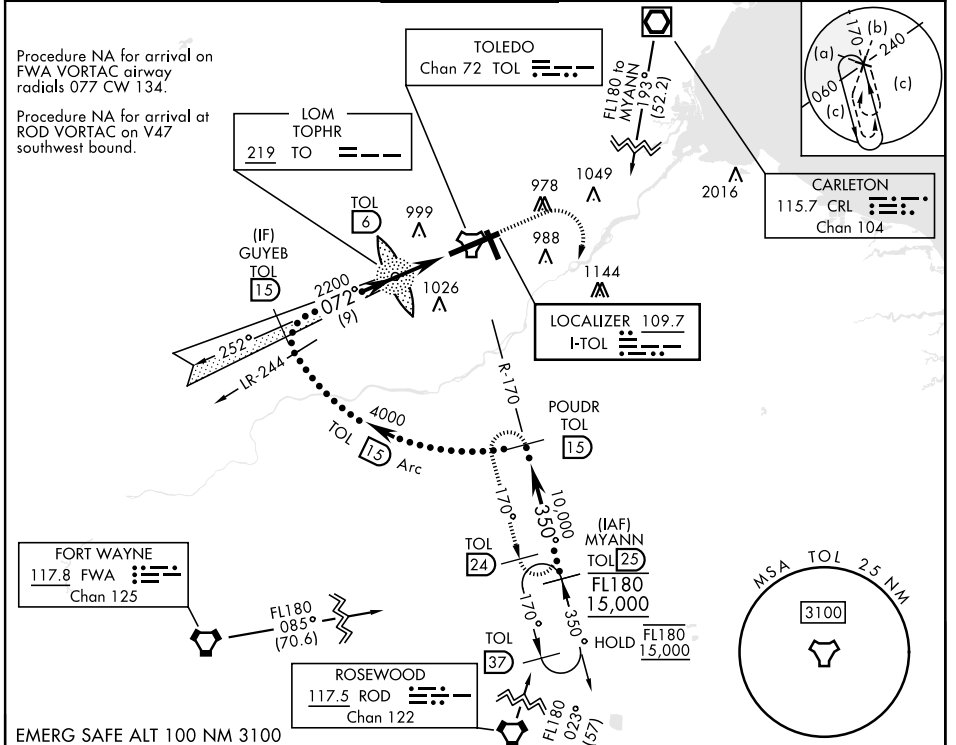


HI-ILS Y or LOC Y RWY 7

LOC I-TOL 109.7	APCH CRS 072°	Rwy Idg 10,599 TDZE 683 Arpt Elev 684	[USAF]	EUGENE F KRANZ TOLEDO EXPRESS (KTOL)
---------------------------	-------------------------	--	--------	--------------------------------------

DME required	ALSF-2	MISSED APPROACH: Climb to 2500, then climbing right turn to 3000 on TOL TACAN R-170 to POUDR/15 DME and hold.
<p>*When ALS inop, increase CAT E RVR to 40, vis to 3/4 mile.</p> <p>**When ALS inop, increase CAT E RVR to 60, vis to 1 1/4 miles.</p>		

ATIS 118.75 290.225	TOLEDO APP CON 126.1 317.55	TOLEDO TOWER 118.1 285.4	GND CON 121.9 348.6	CLNC DEL 121.75 348.6	ASR
-------------------------------	---------------------------------------	------------------------------------	-------------------------------	---------------------------------	-----



EMERG SAFE ALT 100 NM 3100	2500	3000	POUDR TOL 15	ELEV 684	TDZE 683
<p>GUYEB TOL 15</p> <p>4000</p> <p>072°</p> <p>2200</p> <p>LOM TOL 6</p> <p>2162</p> <p>TOL 2.7</p> <p>TOL 1.6</p> <p>4.4 NM</p>					
GS 3.00° TCH 59					
CATEGORY	C	D	E		
S-ILS 7*	886/18	203 (300-1/2)			
S-LOC 7**	1140/45	457 (500-7/8)			
CIRCLING	1300-1 3/4 616 (700-1 3/4)	1400-2 1/4 716 (800-2 1/4)	1400-2 1/2 716 (800-2 1/2)		
				HIRL Rwy 7-25	
				MIRL Rwy 16-34	
				REIL Rwy 16, 34	
				TDZL/CL Rwy 7	

HI-ILS Y or LOC Y RWY 7

EC-2, 09 JUL 2026 to 06 AUG 2026

EC-2, 09 JUL 2026 to 06 AUG 2026