

HI-TACAN RWY 25

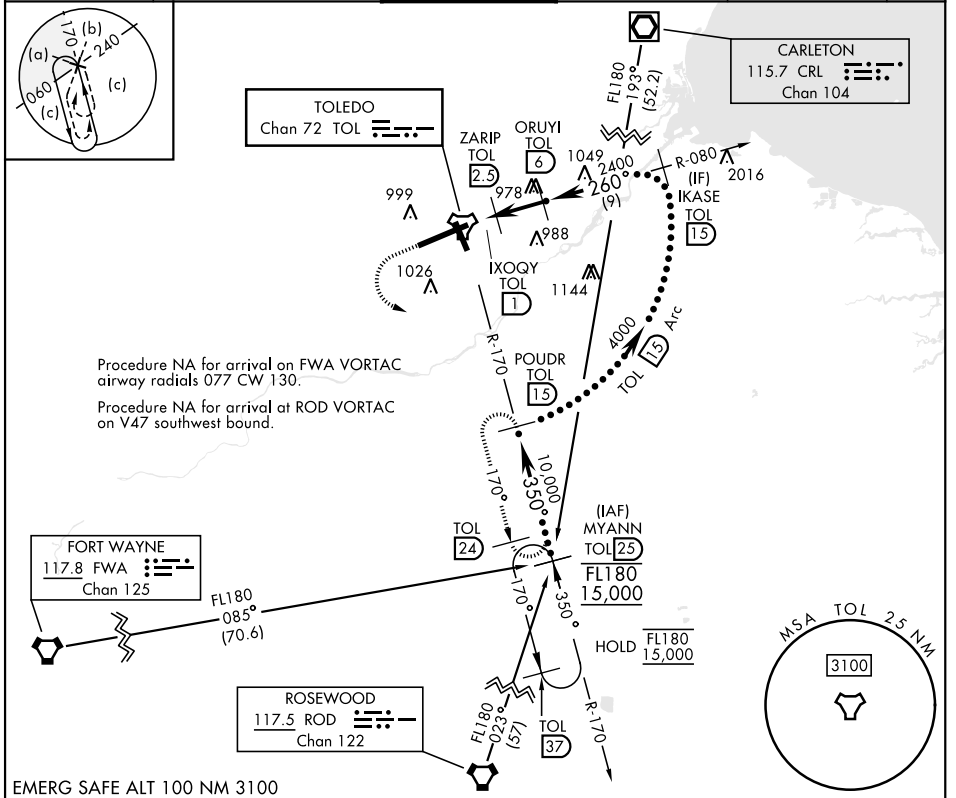
TACAN TOL Chan 72	APCH CRS 260°	Rwy Idg 10,599 TDZE 678 Arprt Elev 684
-----------------------------	-------------------------	---

[USAF]

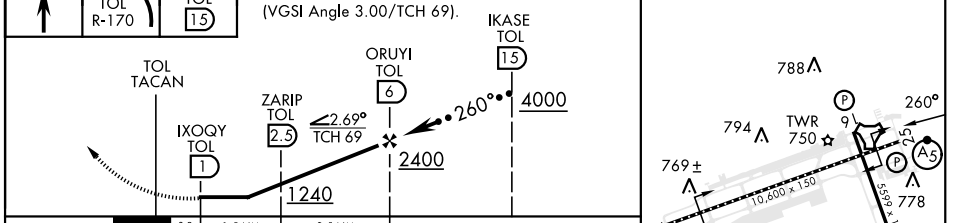
EUGENE F KRANZ TOLEDO EXPRESS (KTOL)

<p>▲ * When ALS inop, increase RVR to 60, vis to 1½ mile.</p> <p>▲ MALSR </p>	<p>MISSED APPROACH: Climb to 3000 then left turn on TOL R-170 to POUDR/15 DME and hold.</p>
---	---

ATIS 118.75 290.225	TOLEDO APP CON 126.1 317.55	TOLEDO TOWER 118.1 285.4	GND CON 121.9 348.6	CLNC DEL 121.75 348.6	ASR
-------------------------------	---------------------------------------	------------------------------------	-------------------------------	---------------------------------	-----



<p>3000 ↑</p> <p>TOL R-170</p> <p>POUDR TOL 15</p> <p>VGSI and ILS glidepath not coincident (VGSI Angle 3.00/TCH 69).</p>	<p>ELEV 684</p> <p>TDZE 678</p>
---	---------------------------------



CATEGORY	C	D	E
S-25 *	1080/40 402 (500-¾)	1080/40	402 (500-¾)
CIRCLING	1360-2 676 (700-2)	1400-2¼ 716 (800-2¼)	1400-2½ 716 (800-2½)

HIRL Rwy 7-25	726 ± A
MIRL Rwy 16-34	
REIL Rwy 16, 34	
TDZL/CL Rwy 7	775 ± A

TOLEDO, OHIO 41° 35'N-83° 48'W EUGENE F KRANZ TOLEDO EXPRESS (KTOL)
Amdt 4D 26DEC24

HI-TACAN RWY 25

EC-2, 09 JUL 2026 to 06 AUG 2026

EC-2, 09 JUL 2026 to 06 AUG 2026