

LOC I-TOL <b>109.7</b>	APP CRS <b>072°</b>	Rwy Ldg <b>10599</b> TDZE <b>683</b> Apt Elev <b>683</b>
---------------------------	------------------------	--

# ILS Z or LOC Z RWY 7

EUGENE F KRANZ TOLEDO EXPRESS (TOL)

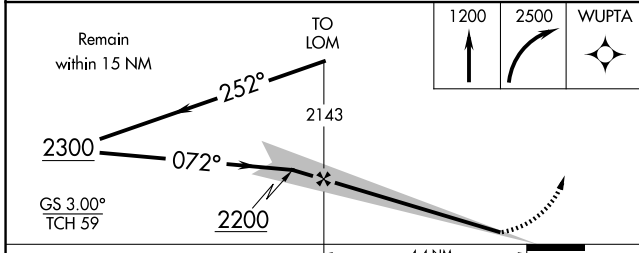
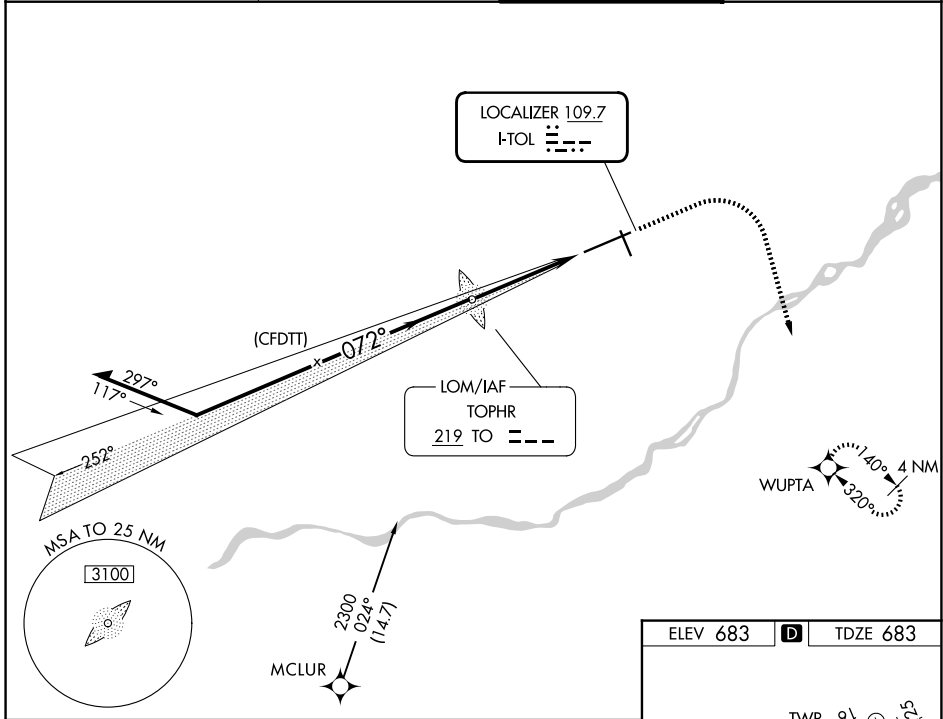
ADF or RADAR required for procedure entry. RNAV 1-GPS required.  
ADF required for LOC only.

**ASR** For inop ALS, increase S-ILS 7 Cat E visibility to RVR 4000, S-LOC 7 Cat C/D/E visibility to 1 3/8 SM.

ALSF-2

MISSED APPROACH: Climb to 1200 then climbing right turn to 2500 direct WUPTA and hold.

ATIS <b>118.75 290.225</b>	TOLEDO APP CON <b>134.35 317.55</b>	TOLEDO TOWER <b>118.1 285.4</b>	GND CON <b>121.9 348.6</b>
-------------------------------	--	------------------------------------	-------------------------------



ELEV 683	<b>D</b>	TDZE 683
----------	----------	----------

TDZ/CL Rwy 7	60	90	120	150	180
HIRL Rwy 7-25	4:24	2:56	2:12	1:46	1:28
MIRL Rwy 16-34					
REIL Rwys 16 and 34					
FAF to MAP 4.4 NM					

CATEGORY	A	B	C	D	E
S-ILS 7	883/18 200 (200-1/2)				
S-LOC 7	1140/24	457 (500-1/2)	1140/45 457 (500-3/8)		
CIRCLING	1200-1	517 (600-1)	1300-1 3/4 617 (700-1 3/4)	1360-2 1/4 677 (700-2 1/4)	1360-2 1/2 677 (700-2 1/2)

EC-2, 09 JUL 2026 to 06 AUG 2026

EC-2, 09 JUL 2026 to 06 AUG 2026