

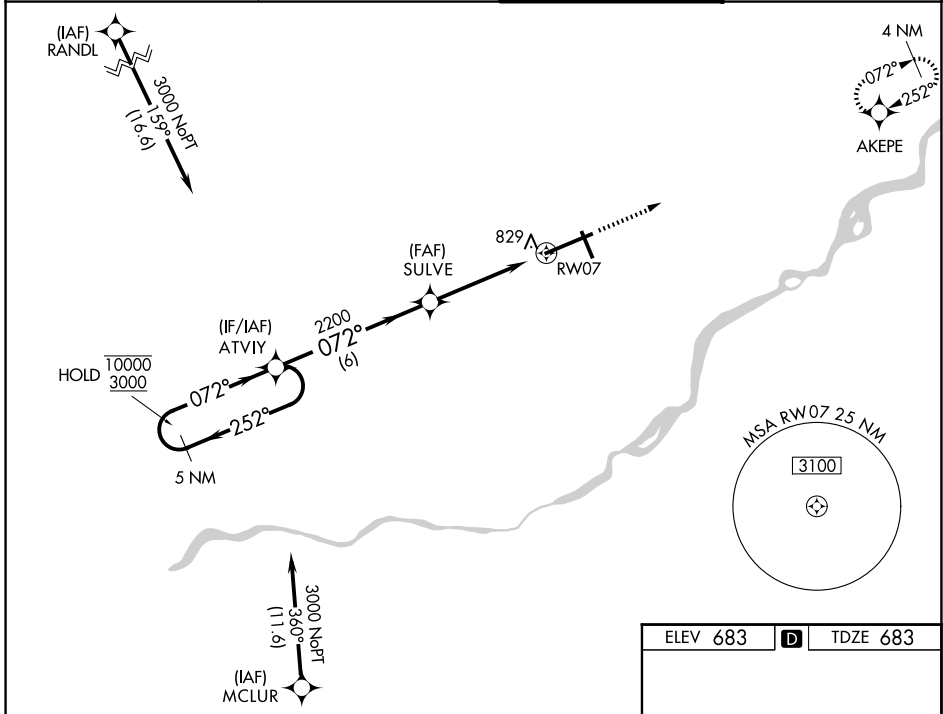
WAAS CH <b>99399</b> <b>W07A</b>	APP CRS <b>072°</b>	Rwy Ldg TDZE Apt Elev <b>10599</b> <b>683</b> <b>683</b>
--	------------------------	---

# RNAV (GPS) RWY 7

EUGENE F KRANZ TOLEDO EXPRESS (TOL)

RNP APCH.	<p><b>T</b> For uncompensated Baro-VNAV systems, LNAV/VNAV NA below -17°C or above 52°C.  <b>A</b> For inop ALS, increase LPV all Cats visibility to RVR 5000. Increase LNAV/VNAV Cat E and LNAV Cat E visibility to 1½ SM.                  ASR</p>	ALSf-2 	MISSED APPROACH: Climb to 3000 direct AKEPE and hold.
-----------	--	------------	---

ATIS <b>118.75 290.225</b>	TOLEDO APP CON <b>134.35 317.55</b>	TOLEDO TOWER <b>118.1 285.4</b>	GND CON <b>121.9 348.6</b>
-------------------------------	--	------------------------------------	-------------------------------



5 NM Holding Pattern

ATVIY

10000 ← 252°  
3000 → 072°

GP 3.00°  
TCH 55

SULVE 2200

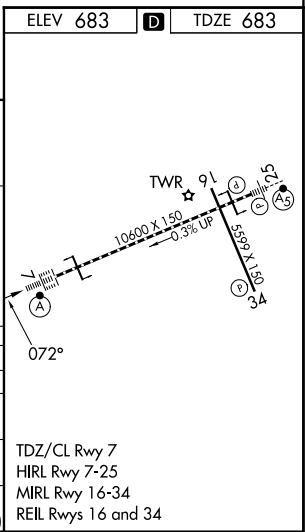
RW07

\*LNAV only.

\*1.3 NM to RW07

6 NM | 3.2 NM | 1.3

CATEGORY	A	B	C	D	E
LPV DA	1018/40 335 (400-¾)				
LNAV/VNAV DA	1129/50 446 (500-1)				
LNAV MDA	1140/24	457 (500-½)	1140/40 457 (500-¾)	1140/50	457 (500-1)
CIRCLING	1200-1	517 (600-1)	1300-1¾ 617 (700-1¾)	1360-2¼ 677 (700-2¼)	1360-2½ 677 (700-2½)



EC-2, 09 JUL 2026 to 06 AUG 2026

EC-2, 09 JUL 2026 to 06 AUG 2026