

LOC I-HLN 110.1	APP CRS 271°	Rwy Ldg 9000
		TDZE 3852
		Apt Elev 3877

ILS Y or LOC Y RWY 27

HELENA RGNL (HLN)

ADF or RADAR required for procedure entry. ADF or DME required.

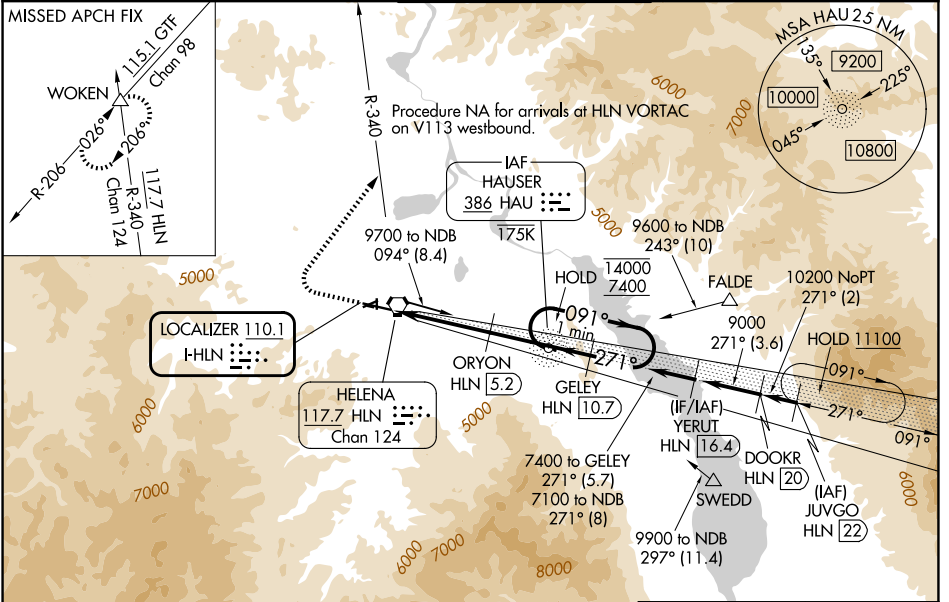
⚠ Circling NA to Rwys 10 and 28. Circling Rwy 5, 23, 35 NA at night. Inop table does not apply to S-LOC 27 all Cats. For inop ALS, increase S-ILS 27 all Cats visibility to 1½ SM, ORYON fix minimums: S-LOC 27 Cat C/D/E visibility to 2 SM. Holding at HAU NDB authorized for Cat A and B aircraft only. Circling NA for Cats D and E south of Rwy 9-27.
*DME from HLN VORTAC. DME use requires simultaneous reception of I-HLN and HLN DME.

MALSRL

AS

MISSED APPROACH: Climb to 4700 then climbing right turn to 9300 on heading 021° and on HLN VORTAC R-340 to WOKEN INT and hold, continue climb-in-hold to 9300.

ATIS 120.4	HELENA APP CON * 119.5 229.4	HELENA TOWER * 118.3 (CTAF) 0 257.8	GND CON 121.9	UNICOM 122.95
----------------------	--	---	-------------------------	-------------------------



4700	9300	HLN	WOKEN					
↑	hdg 021°	R-340	△	One Minute Holding Pattern				
HLN 1.9		ORYON HLN 5.2	HAU NDB	GELEY HLN 10.7				
2.2 NM		3.3 NM	3.3 NM	2.3 NM				
CATEGORY	A	B	C	D	E			
S-ILS 27	4496-1¾		644 (700-1¾)					
S-LOC 27	5640-1¼ 1788 (1800-1¼)	5640-1½ 1788 (1800-1½)	5640-3		1788 (1800-3)			
CIRCLING	5640-1¼ 1763 (1800-1¼)	5640-1½ 1763 (1800-1½)	6000-3		2123 (2200-3)			
ORYON FIX MINIMUMS*								
S-LOC 27	4600-½ 748 (800-½)	4600-¾ 748 (800-¾)	4600-1¾		748 (800-1¾)			
CIRCLING	4640-1 763 (800-1)	4800-1¼ 923 (1000-1¼)	6000-3		2123 (2200-3)			

ELEV 3877 **D** TDZE 3852

REIL Rwys 9, 17 and 35 **Ⓛ**
MIRL Rwys 5-23 and 17-35 **Ⓛ**
HIRL Rwy 9-27 **Ⓛ**

FAF to MAP 8.7 NM

Knots	60	90	120	150	180
Min:Sec	8:42	5:48	4:21	3:29	2:54

NW-1, 09 JUL 2026 to 06 AUG 2026

NW-1, 09 JUL 2026 to 06 AUG 2026