

# RNAV (RNP) Y RWY 27

HELENA RGNL (HLN)

APP CRS <b>271°</b>	Rwy Ldg TDZE Apt Elev	<b>9000</b> <b>3852</b> <b>3877</b>
------------------------	-----------------------------	---

RNP AR APCH - GPS.

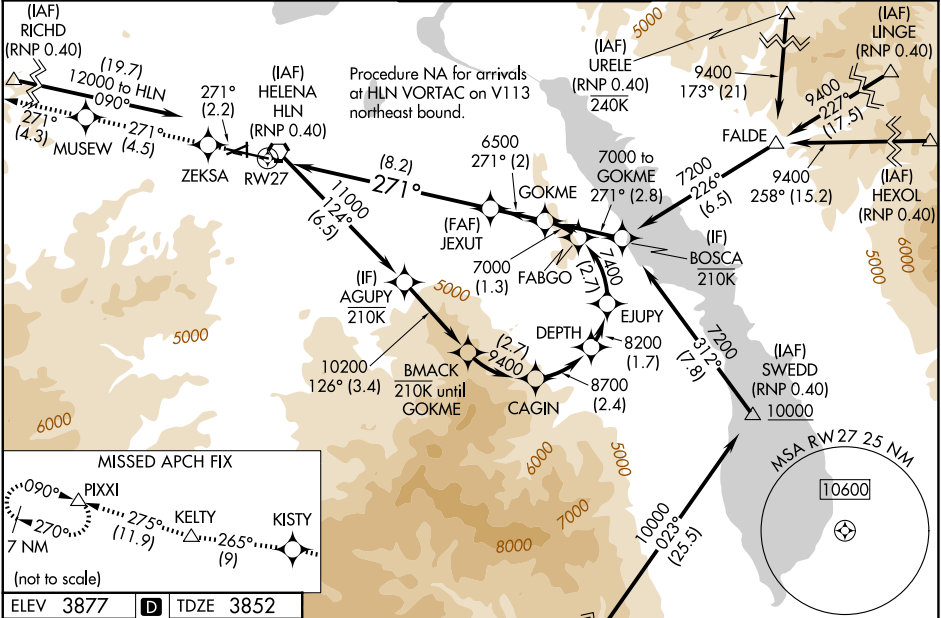
**⚠** For uncompensated Baro-VNAV systems, procedure NA below -28°C or above 54°C. Missed approach requires RNP less than 1.0. For inop ALS, increase RNP 0.30 DA\* visibility all Cats to 1 1/2 SM.

MALSRS

**⚠** MISSED APPROACH: Climb to 12000 on the RNAV missed approach route to PIXXI and hold, continue climb-in-hold to 12000.

\*Missed approach requires minimum climb of 260 feet per NM to 7900; if unable to meet climb gradient, see RNAV (RNP) Z RWY 27.

ATIS <b>120.4</b>	HELENA APP CON * <b>119.5 229.4</b>	HELENA TOWER * <b>118.3 (CTAF) 0 257.8</b>	GND CON <b>121.9</b>	UNICOM <b>122.95</b>
----------------------	--	---	-------------------------	-------------------------



ELEV 3877	<b>D</b>	TDZE 3852
-----------	----------	-----------



12000	ZEKSA	MUSEW	KISTY	KELTY	PIXXI	GOKME
tr 271°	tr 271°	tr 271°	tr 265°	tr 275°	tr 275°	
See planview for multiple IF locations.						
	JEXUT					
	6500					7000
						6500
						GP 3.00°
						TCH 55
						8.2 NM
						2 NM

CATEGORY	A	B	C	D
RNP 0.15 DA*	4284-3/4		432 (500-3/4)	
RNP 0.30 DA*	4321-1		469 (500-1)	

## AUTHORIZATION REQUIRED

NW-1, 09 JUL 2026 to 06 AUG 2026

NW-1, 09 JUL 2026 to 06 AUG 2026