

# RNAV (RNP) Z RWY 27

HELENA RGNL (HLN)

APP CRS <b>271°</b>	Rwy Ldg TDZE Apt Elev	<b>9000</b> <b>3852</b> <b>3877</b>
------------------------	-----------------------------	---

RNP AR APCH - GPS.

**⚠** Inop table does not apply to RNP 0.30 DA. For uncompensated Baro-VNAV systems, procedure NA below -28°C or above 54°C. For inop ALS, increase RNP 0.13 DA\* visibility all Cats to ¾ SM, RNP 0.30 DA\* visibility all Cats to 1¾ SM.

**MALSR**

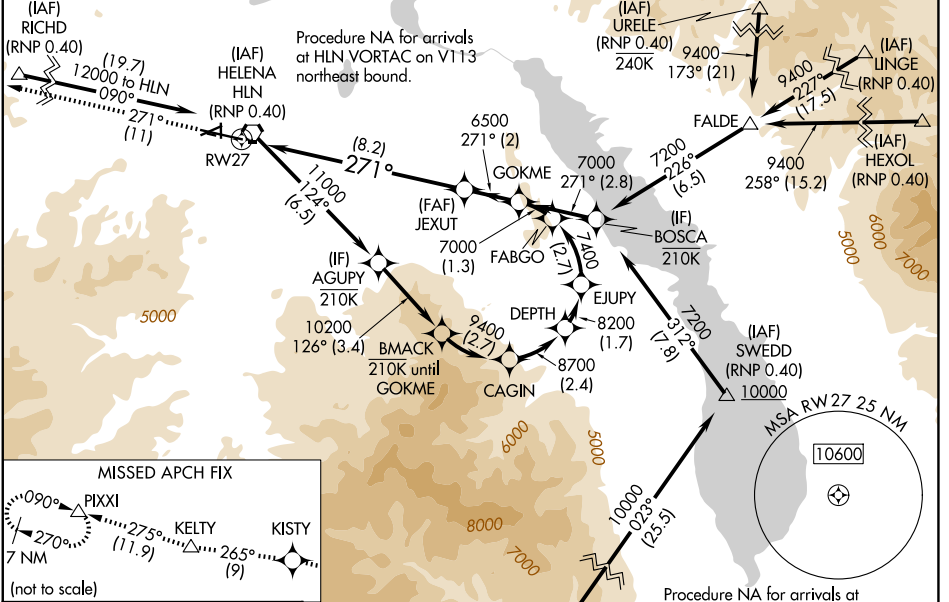
**AS**

MISSED APPROACH: Climb to 12000 on the RNAV missed approach route to PIXXI and hold, continue climb-in-hold to 12000.

\*Missed approach requires minimum climb of 280 feet per NM to 7800.

#Missed approach requires minimum climb of 375 feet per NM to 6300.

ATIS <b>120.4</b>	HELENA APP CON * <b>119.5 229.4</b>	HELENA TOWER * <b>118.3 (CTAF) 257.8</b>	GND CON <b>121.9</b>	UNICOM <b>122.95</b>
----------------------	--	---	-------------------------	-------------------------



ELEV 3877	<b>D</b>	TDZE 3852
-----------	----------	-----------

REIL Rws 9, 17, and 35

MIRL Rws 5-23 and 17-35

HIRL Rwy 9-27

12000	KISTY	tr 265°	KELTY	tr 275°	PIXXI	JEXUT	GOKME
tr 271°	△	△	△	△	6500	7000	GP 3.00° TCH 55
See planview for multiple IF locations.							
RW27		8.2 NM		2 NM			
CATEGORY	A	B	C	D			
RNP 0.13 DA*		4172-½	320 (300-½)				
RNP 0.20 DA#		4303-7/8	451 (500-7/8)				
RNP 0.30 DA#		4353-1	501 (500-1)				
RNP 0.30 DA		4866-4	1014 (1000-4)				

## AUTHORIZATION REQUIRED

NW-1, 09 JUL 2026 to 06 AUG 2026

NW-1, 09 JUL 2026 to 06 AUG 2026