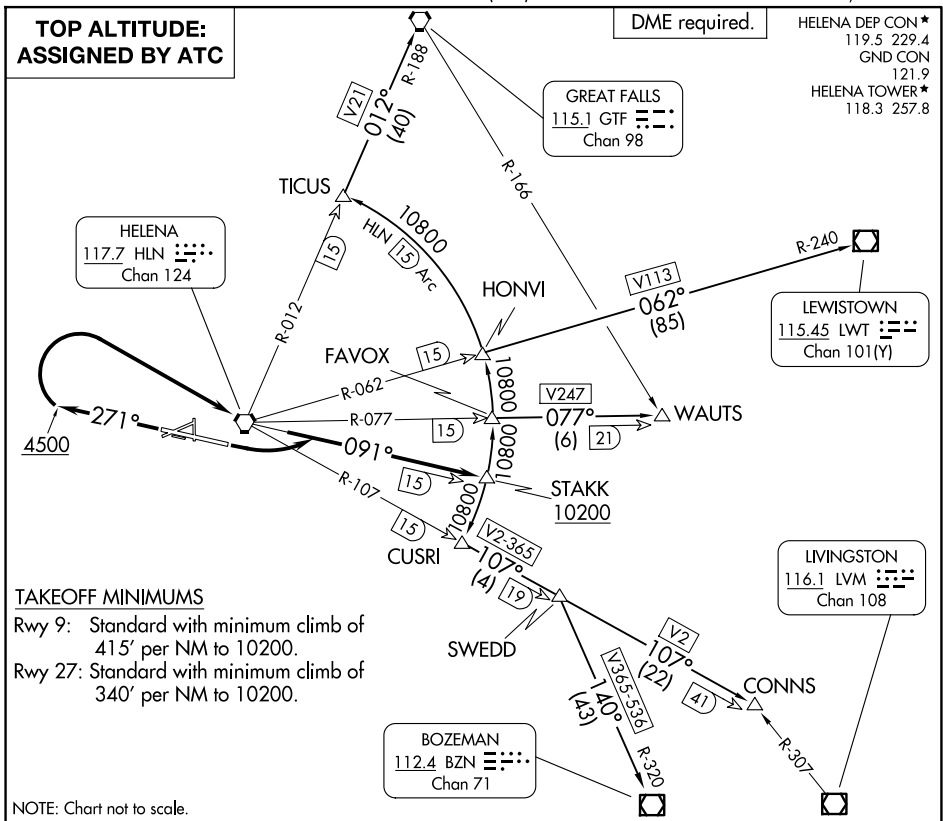


# STAKK FIVE DEPARTURE

HELENA RGNL (HLN)

HELENA, MONTANA



### TAKEOFF MINIMUMS

- Rwy 9: Standard with minimum climb of 415' per NM to 10200.
- Rwy 27: Standard with minimum climb of 340' per NM to 10200.

NOTE: Chart not to scale.

### DEPARTURE ROUTE DESCRIPTION

**TAKEOFF RUNWAY 9:** Climbing left turn to intercept HLN R-091 to cross STAKK at or above 10200, thence. . . .

**TAKEOFF RUNWAY 27:** Climb on heading 271° to 4500 then climbing right turn direct HLN VORTAC. Continue climb on HLN R-091 to cross STAKK at or above 10200, thence. . . .  
. . . .on transition. Maintain assigned altitude.

**BOZEMAN TRANSITION (STAKK5.BZN):** From over STAKK on 15 DME Arc to CUSRI INT, then on HLN R-107 to SWEDD INT, then on BZN R-320 to BZN VOR/DME.

**CONNS TRANSITION (STAKK5.CONNS):** From over STAKK on 15 DME Arc to CUSRI INT, then on HLN R-107 to SWEDD INT, then on HLN R-107 to CONNS INT.

**GREAT FALLS TRANSITION (STAKK5.GTF):** From over STAKK on 15 DME Arc to TICUS, then on HLN R-012 and GTF R-188 to GTF VORTAC.

**LEWISTOWN TRANSITION (STAKK5.LWT):** From over STAKK on 15 DME Arc to HONVI, then on HLN R-062 and LWT R-240 to LWT VOR/DME.

**WAUTS TRANSITION (STAKK5.WAUTS):** From over STAKK on 15 DME Arc to FAVOX, then on HLN R-077 to WAUTS INT.

# STAKK FIVE DEPARTURE

(STAKK5.STAKK) 23FEB23

HELENA, MONTANA  
HELENA RGNL (HLN)

NW-1, 09 JUL 2026 to 06 AUG 2026

NW-1, 09 JUL 2026 to 06 AUG 2026