

CASCADE FOUR DEPARTURE (RNAV)

AL-330 (FAA)

PORTLAND INTL (PDX)
PORTLAND, OREGON

9200 GVNVA 09 JUL 2026 11:00:00

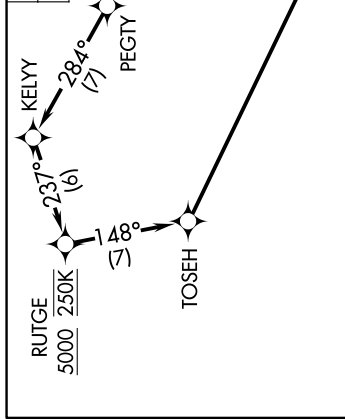
**TOP ALTITUDE:
ASSIGNED BY ATC**

PORTLAND/DEP CON
118.1 284.6
D-ATIS
128.35 269.9
CLNC DEL
120.125 318.1
CPDIC
GND CON
121.9 348.6
PORTLAND TOWER
118.7 257.8 (Rwy 10L-28R)
123.775 251.125 (Rwys 3-21, 10R-28L)

TAKEOFF MINIMUMS
Rwys 10L/R: Standard with minimum climb of 500'/NM to 540.
Rwy 28L: Standard with minimum climb of 350'/NM to 540.
Rwy 28R: Standard with minimum climb of 300'/NM to 540.

**TOP ALTITUDE:
ASSIGNED BY ATC**

RNAV 1 - DME/DME/IRU or GPS required.
RADAR required for non-GPS equipped aircraft.



▼ DEPARTURE ROUTE DESCRIPTION

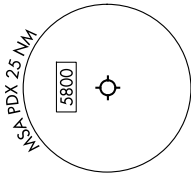
TAKEOFF RUNWAY 10L: Climb on heading 103° to intercept course 082° to RIVRR, then on depicted route to cross CHISM at or above 10100, thence...

TAKEOFF RUNWAY 10R: Climb on heading 103° to intercept course 078° to RIVRR, then on depicted route to cross CHISM at or above 10100, thence...

TAKEOFF RUNWAY 28L: Climb direct PEGTY, then on depicted route to cross CHISM at or above 10100, thence...

TAKEOFF RUNWAY 28R: Climb on heading 283° to intercept course 269° to PEGTY, then on depicted route to cross CHISM at or above 10100, thence... on transition, maintain ATC assigned altitude. Expect filed altitude 10 minutes after departure.

DESCHUTES TRANSITION (CASCD4.DSD)
JUDAH TRANSITION (CASCD4.JUDAH)
PUHTS TRANSITION (CASCD4.PUHTS)
SYNKR TRANSITION (CASCD4.SYNKR)



NOTE: Jet aircraft only.
NOTE: Chart not to scale.

NW-1, 09 JUL 2026 to 06 AUG 2026

CASCADE FOUR DEPARTURE (RNAV)