

PORTLAND, OREGON

HI-ILS or LOC RWY 10R

LOC/DME I-PDX 110.5 Chan 42	APCH CRS 103°	Rwy ldg 11,000 TDZE 24 Arprt Elev 31
-------------------------------------------------	-------------------------	-----------------------------------------------------------------

AL-330 [USAF]

PORTLAND INTL (KPDX)

DME required.

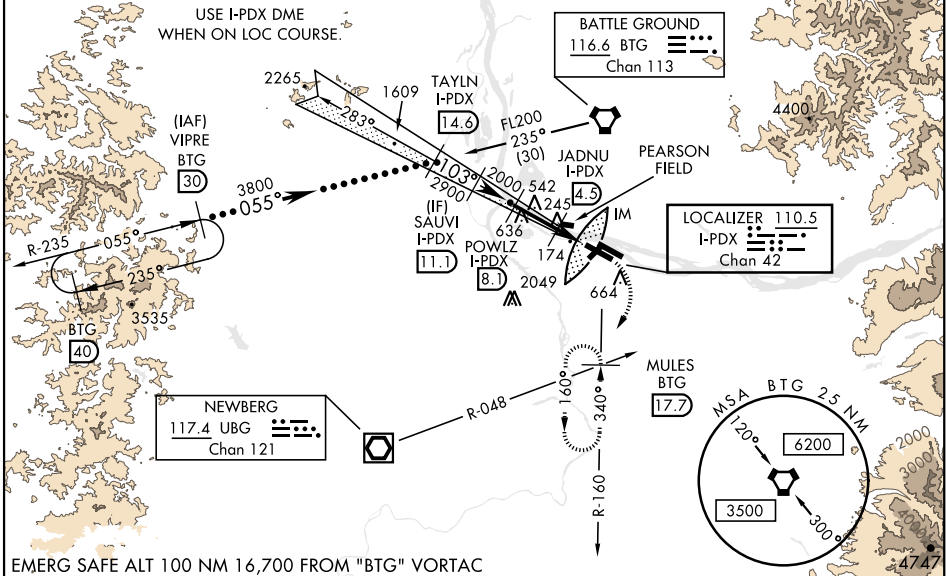
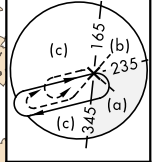
* When ALS inop, increase RVR to 40 and vis to 3/4 mile.



MISSED APPROACH: Climb to 1100 then climbing right turn to 5000 on BTG VORTAC R-160 to MULES/BTG 17.7 DME and hold, continue climb-in-hold to 5000.

ATIS 128.35 269.9	APP CON 118.1 284.6 (100°-279°) 124.35 299.2 (280°-099°)	TOWER 118.7 257.8 Rwy 10L-28R 123.775 251.125 Rwy 3-21, 10R-28L	GND CON 121.9 348.6	CLNC DEL 120.125 318.1
-----------------------------	------------------------------------------------------------------------------	-------------------------------------------------------------------------------------------	-------------------------------	----------------------------------

** When ALS inop, increase CAT CDE RVR to 60 and vis to 1 1/2 miles.
*** When VGSI rwy 28R inop, circling rwy 28R NA at night.
Simultaneous approach authorized.



VGSI and ILS glidepath not coincident (VGSI Angle 3.00/TCH 71). VIPRE BTG 30 TAYLN I-PDX 14.6 SAUVI I-PDX 11.1 POWLZ I-PDX 8.1 JADNU I-PDX 4.5 I-PDX 3.1 I-PDX 2 LOC DME GS 3.00° TCH 53 FL200 055° 3800 2900 2000 860' 3.6 NM 2.4 NM 0.1	1100 5000 BTG R-160 MULES BTG 17.7	ELEV 31 TDZE 24 Rwy 10L ldg 8535' Rwy 28R ldg 9290' Δ 424 ±																
<table border="1"> <tr> <th>CATEGORY</th> <th>C</th> <th>D</th> <th>E</th> </tr> <tr> <td>S-ILS 10R*</td> <td>224/18</td> <td>200</td> <td>(200-3%)</td> </tr> <tr> <td>S-LOC 10R**</td> <td>440/40</td> <td>416</td> <td>(500-3%)</td> </tr> <tr> <td>CIRCLING***</td> <td>1060-3</td> <td>1029 (1100-3)</td> <td>1140-3 1109 (1200-3)</td> </tr> </table>	CATEGORY	C	D	E	S-ILS 10R*	224/18	200	(200-3%)	S-LOC 10R**	440/40	416	(500-3%)	CIRCLING***	1060-3	1029 (1100-3)	1140-3 1109 (1200-3)	<p>REIL Rwy 3-21 TDZL/CL Rwy 10R MRL Rwy 3-21 HIRL Rwy 10L-28R, 28L-10R</p>	
CATEGORY	C	D	E															
S-ILS 10R*	224/18	200	(200-3%)															
S-LOC 10R**	440/40	416	(500-3%)															
CIRCLING***	1060-3	1029 (1100-3)	1140-3 1109 (1200-3)															

PORTLAND, OREGON

45° 35' N - 122° 36' W

PORTLAND INTL (KPDX)

Amdt 7C 03NOV22

HI-ILS or LOC RWY 10R

NW-1, 09 JUL 2026 to 06 AUG 2026

NW-1, 09 JUL 2026 to 06 AUG 2026