

HI-TACAN RWY 10R

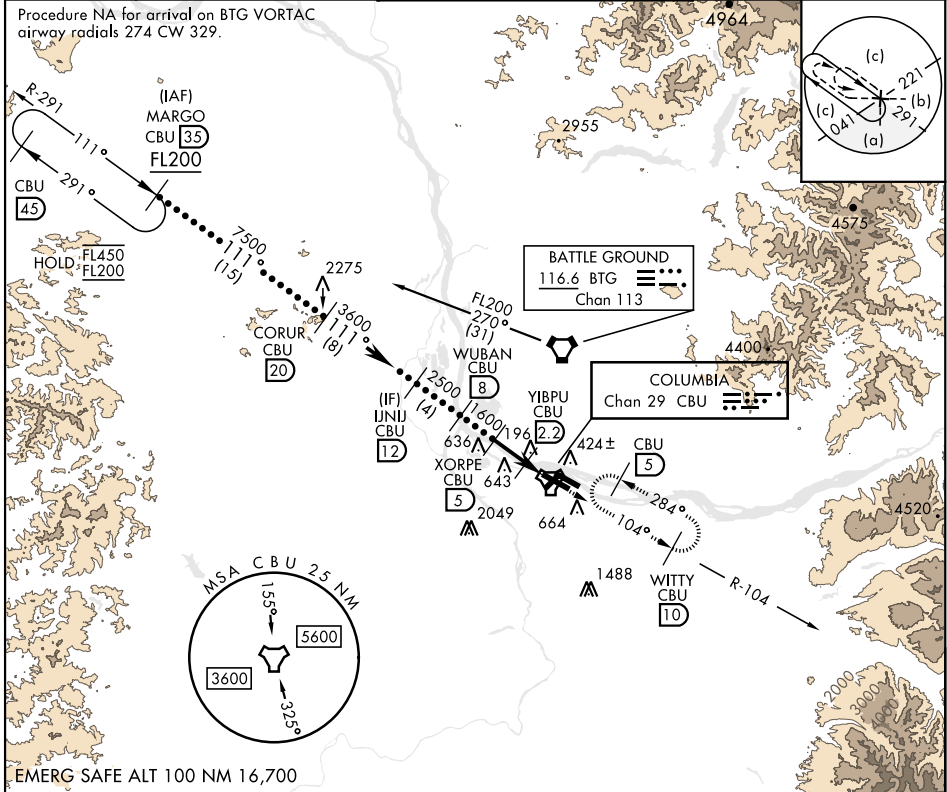
TACAN CBU Chan 29	APCH CRS 111°	Rwy ldg 11,000 TDZE 24 Arpt Elev 31
-----------------------------	-------------------------	--

[USAF]

PORTLAND INTL (KPDX)

MISSED APPROACH: Climb to 4000 on CBU TACAN R-104 to WITTY/CBU 10 DME and hold, continue climb-in-hold to 4000.

ATIS 128.35 269.9	APP CON 118.1 284.6 (100°-279°) 124.35 299.2 (280°-099°)	TOWER 118.7 257.8 Rwy 10L-28R 123.775 251.125 Rwy 3-21, 10R-28L	GND CON 121.9 348.6	CLNC DEL 120.125 318.1
------------------------------------	---	--	--------------------------------------	---



VGSI and ILS glidepath not coincident (VGSI Angle 3.00/TCH 71)
 WITTY CBU 10
 ELEV 31 TDZE 24
 Rwy 10L ldg 8535' Rwy 28R ldg 9290'

MARGO 35 FL200 711°
 CORUR 20 7500
 UNJI 12 3600
 WUBAN 8 2500
 XORPE 5 1600
 YIBPU 2.2 640
 TACAN 0.6
 4.4 NM

CATEGORY	C	D	E
S-10R *	460/40	436	(500-¾)
CIRCLING	1020-3 989	(1000-3)	1140-3 1109 (1200-3)

REIL Rwy 3, 21
 TDZL/CL Rwy 10R
 MIRL Rwy 3-21
 HIRL Rwy 10L-28R, 28L-10R

HI-TACAN RWY 10R

NW-1, 09 JUL 2026 to 06 AUG 2026

NW-1, 09 JUL 2026 to 06 AUG 2026