

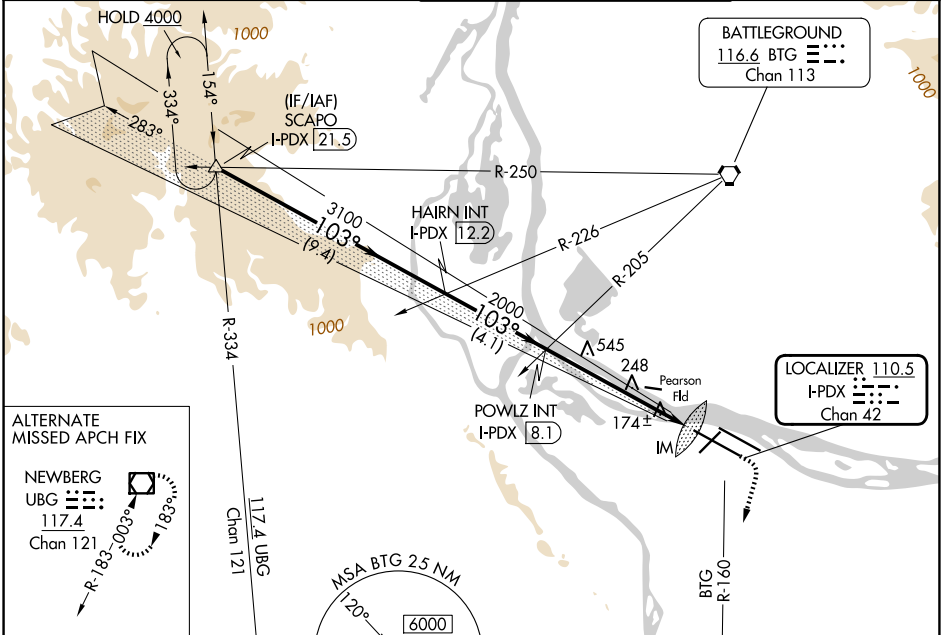
LOC/DME I-PDX 110.5 Chan 42	APP CRS 103°	Rwy Ldg 11000 TDZE 24 Apt Elev 31
---	------------------------	--

ILS RWY 10R (CAT II & III)

PORTLAND INTL (PDX)

<p>Simultaneous approach authorized. CAT II: RVR 1000 authorized with specific OPSPEC, MSPEC, or LOA approval and use of autoland or HUD to touchdown.</p>	<p>ALSF-2</p>	<p>MISSED APPROACH: Climb to 1100 then climbing right turn to 5000 on BTG VORTAC R-160 to MULES/BTG 17.7 DME and hold, continue climb-in-hold to 5000.</p>
--	---------------	--

D-ATIS 128.35 269.9	PORTLAND APP CON 124.35 299.2	PORTLAND TOWER 118.7 257.8 (10L-28R) 123.775 251.125 (3-21, 10R-28L)	GND CON 121.9 348.6
-------------------------------	---	--	-------------------------------



ALTERNATE MISSED APCH FIX

NEWBERG UBG 117.4 Chan 121

ELEV 31	D	TDZE 24
---------	----------	---------

SCAPO I-PDX [21.5]	VGSI and ILS glidepath not coincident (VGSI Angle 3.00/TCH 71).	1100	5000	MULES
HAIRN INT I-PDX [12.2]	POWLZ INT I-PDX [8.1]	↑	BTG R-160	△
4000	3100	2000	IM 121	
9.4 NM		4.1 NM		6 NM
CATEGORY A		CATEGORY B		CATEGORY C
S-ILS 10R		CAT II RA 107/12 100 DA 124		
S-ILS 10R		CAT III RVR 03		

REIL Rwy 3 and 21
TDZL/RCLS Rwy 10R
MIRL Rwy 3-21
HIRL Rwy 10L-28R and 10R-28L

CATEGORY II & III ILS - SPECIAL AIRCREW & AIRCRAFT CERTIFICATION REQUIRED

NW-1, 09 JUL 2026 to 06 AUG 2026

NW-1, 09 JUL 2026 to 06 AUG 2026