

| | | | | |
|----------------|-------------|--------------|-------------|-----------|
| LOC/DME I-PDX | APP CRS | Rwy Ldg | 10R | 10L |
| 110.5 | 103° | 11000 | 8535 | |
| Chan 42 | | TDZE | 24 | 30 |
| | | Apt Elev | 31 | 31 |

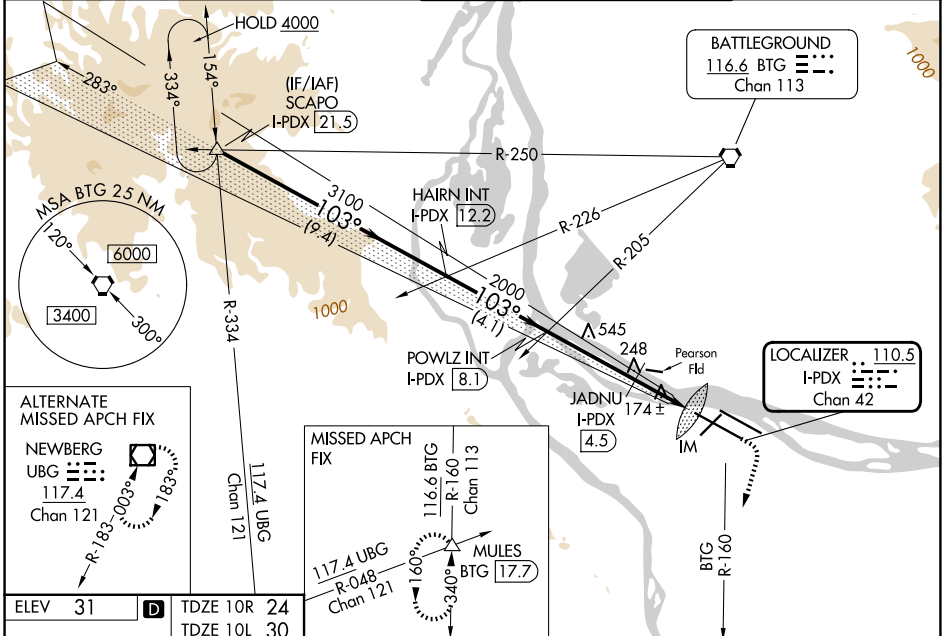
ILS or LOC RWY 10R

PORTLAND INTL (PDX)

⚠ Simultaneous approach authorized. Inop table does not apply to Sidestep LOC 10L. For inop ALS increase S-ILS 10R Cat E visibility to RVR 4000. For inop ALS increase S-LOC 10R Cat C/D/E visibility to 2½ SM. For inop ALS increase JADNU fix minimums S-LOC 10R Cat C/D/E visibility to RVR 6000. Sidestep NA until passing JADNU.

| | | |
|----------------|---------------|---|
| ALSF-2 Rwy 10R | MALSR Rwy 10L | MISSED APPROACH: Climb to 1100 then climbing right turn to 5000 on BTG VORTAC R-160 to MULES/BTG 17.7 DME and hold, continue climb-in-hold to 5000. |
|----------------|---------------|---|

| | | | |
|-------------------------------|---|--|-------------------------------|
| D-ATIS 128.35 269.9 | PORTLAND APP CON 124.35 299.2 | PORTLAND TOWER 118.7 257.8 (10L-28R) 123.775 251.125 (3-21, 10R-28L) | GND CON 121.9 348.6 |
|-------------------------------|---|--|-------------------------------|



ALTERNATE MISSED APCH FIX

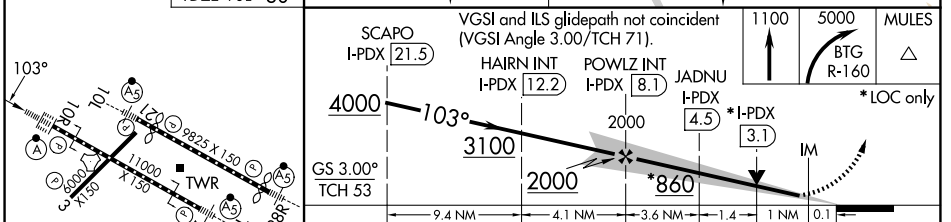
NEWBERG
UBG
117.4
Chan 121

MISSED APCH FIX
117.4 UBG
R-048
Chan 121

BATTLEGROUND
116.6 BTG
Chan 113

LOCALIZER
110.5
I-PDX
Chan 42

| | | | | | | |
|------|----|---|----------|----|----------|----|
| ELEV | 31 | D | TDZE 10R | 24 | TDZE 10L | 30 |
|------|----|---|----------|----|----------|----|



| | | | | | |
|-------------------|-------------------|---------------|------------------------------|-----------------|------|
| REIL Rwy 3 and 21 | TDZL/RCLS Rwy 10R | MIRL Rwy 3-21 | HIRL Rwy 10L-28R and 10R-28L | FAF to MAP 6 NM | |
| Knots | 60 | 90 | 120 | 150 | 180 |
| Min:Sec | 6:00 | 4:00 | 3:00 | 2:24 | 2:00 |

| | | | | | |
|--------------------|-----------------------|------------------------|---------------------|---------------|-------------------------|
| CATEGORY | A | B | C | D | E |
| S-ILS 10R | 224/18 200 (200-½) | | | | |
| S-LOC 10R | 860/24 836 (900-½) | 860/40 836 (900-¾) | 860-1⅞ 836 (900-1⅞) | | |
| CIRCLING | 860-1¼ | 829 (900-1¼) | 1060-3 | 1029 (1100-3) | 1140-3 1109 (1200-3) |
| JADNU FIX MINIMUMS | | | | | |
| S-LOC 10R | 440/24 | 416 (500-½) | 440/40 416 (500-¾) | | |
| SIDESTEP 10L | 800-1 770 (800-1) | 800-1¼ 770 (800-1¼) | 800-2½ | 770 (800-2½) | 800-2¾ 770 (800-2¾) |

NW-1, 09 JUL 2026 to 06 AUG 2026

NW-1, 09 JUL 2026 to 06 AUG 2026