

|             |                      |
|-------------|----------------------|
| APP CRS     | Rwy Ldg <b>11000</b> |
| <b>283°</b> | TDZE <b>23</b>       |
|             | Apt Elev <b>31</b>   |

# RNAV (RNP) Y RWY 28L

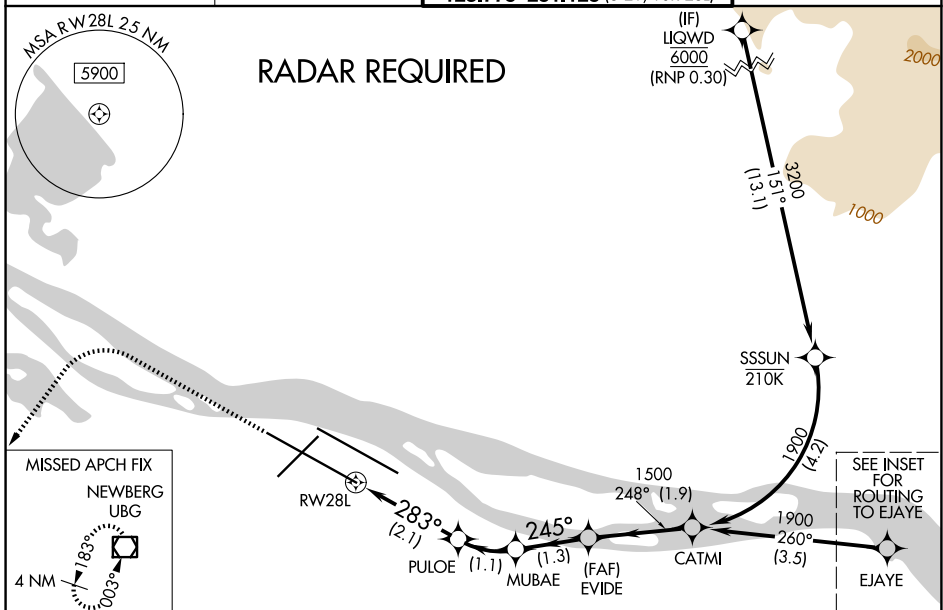
PORTLAND INTL (PDX)

▼ For uncompensated Baro-VNAV systems, procedure NA below -7°C (20°F) or above 54°C (130°F). For inop MALSR, increase RNP 0.23 all Cats visibility to RVR 5600 and increase RNP 0.30 all Cats visibility to 1½ mile. Simultaneous approach authorized with Rwy 28R. RF required. GPS required. Use of FD or AP providing RNAV track guidance required during simultaneous operations.



MISSED APPROACH: Climb to 2100 then climbing left turn to 4000 direct UBG VOR/DME and hold.

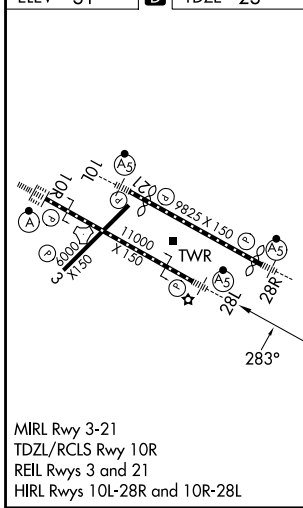
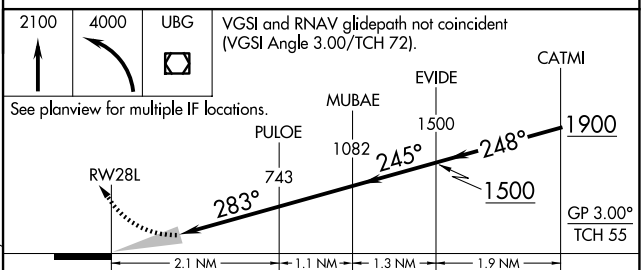
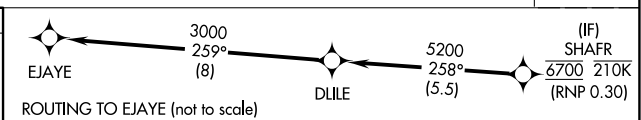
|                               |   |  |                               |
|-------------------------------|---|--|-------------------------------|
| D-ATIS<br><b>128.35 269.9</b> | PORTLAND APP CON<br><b>124.35 299.2</b> | PORTLAND TOWER<br><b>118.7 257.8 (10L-28R)</b><br><b>123.775 251.125 (3-21, 10R-28L)</b> | GND CON<br><b>121.9 348.6</b> |
|-------------------------------|---|--|-------------------------------|



NW-1, 09 JUL 2026 to 06 AUG 2026

NW-1, 09 JUL 2026 to 06 AUG 2026

|         |          |         |
|---------|----------|---------|
| ELEV 31 | <b>D</b> | TDZE 23 |
|---------|----------|---------|



| CATEGORY    | A | B      | C                         | D |
|-------------|---|--------|---------------------------|---|
| RNP 0.23 DA |   | 370/33 | 347 (400- $\frac{5}{8}$ ) |   |
| RNP 0.30 DA |   | 476/53 | 453 (500-1)               |   |

## AUTHORIZATION REQUIRED

# RNAV (RNP) Y RWY 28L