

WAAS CH 40004 W10A	APP CRS 103°	Rwy Ldg 11000 TDZE 24 Apt Elev 31
---------------------------------	------------------------	--

RNAV (GPS) Y RWY 10R

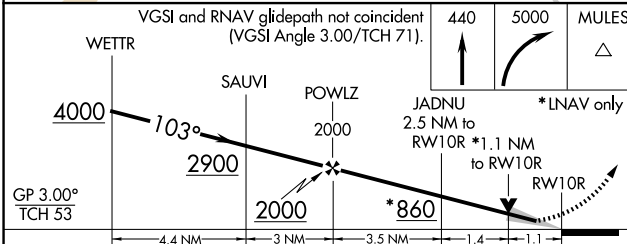
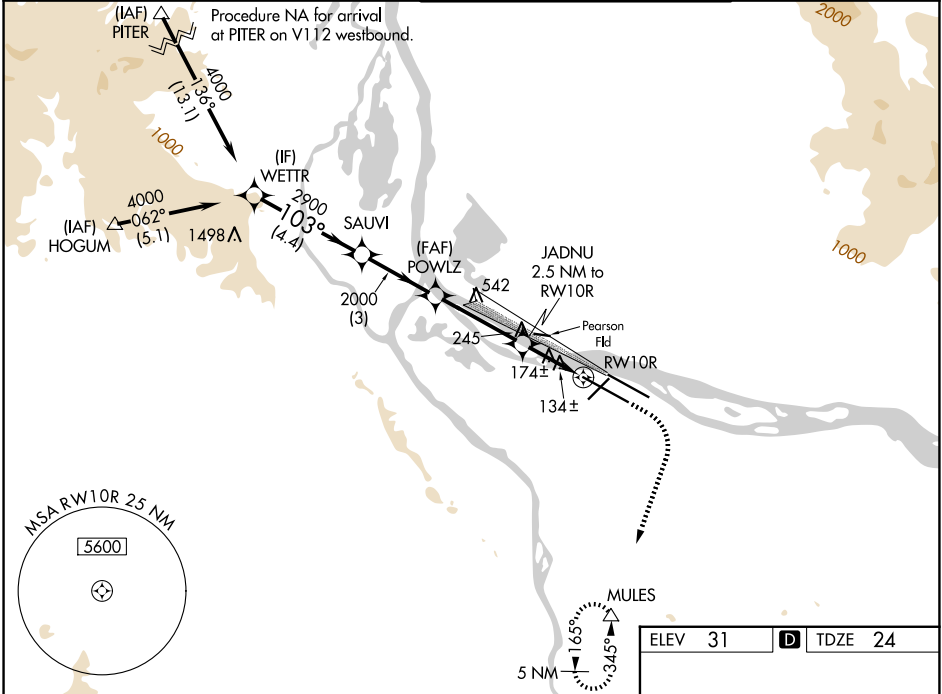
PORTLAND INTL (PDX)

⚠ For uncompensated Baro-VNAV systems, LNAV/VNAV NA below -1.5°C (5°F) or above 54°C (130°F). DME/DME RNP-0.3 NA. Simultaneous approach authorized with Rwy 10L. Use of FD or AP providing RNAV track guidance required during simultaneous operations. LNAV procedure NA during simultaneous operations.

ALSIF-2
(A)

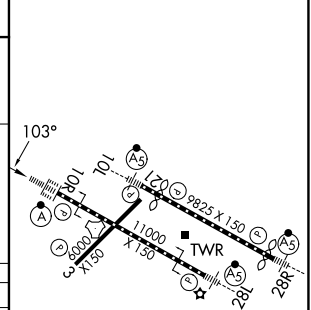
MISSED APPROACH: Climb to 440 then climbing right turn to 5000 direct MULES and hold.

D-ATIS 128.35 269.9	PORTLAND APP CON 124.35 299.2	PORTLAND TOWER 118.7 257.8 (10L-28R) 123.775 251.125 (3-21, 10R-28L)	GND CON 121.9 348.6
-------------------------------	---	--	-------------------------------



GP 3.00° TCH 53	WETTR				440	5000	MULES
CATEGORY	A	B	C	D			
LPV DA	224/18		200 (200-½)				
LNAV/VNAV DA	329/24		305 (300-½)				
LNAV MDA	440/24	416 (500-½)	440/40	416 (500-¾)			
CIRCLING	720-1 689 (700-1)	760-1 729 (800-1)	1060-3	1029 (1100-3)			

ELEV 31	D TDZE 24
---------	------------------



REIL Rwy 3 and 21
TDZL/RCLS Rwy 10R
MIRL Rwy 3-21
HIRL Rwy 10L-28R and 10R-28L

NW-1, 09 JUL 2026 to 06 AUG 2026

NW-1, 09 JUL 2026 to 06 AUG 2026