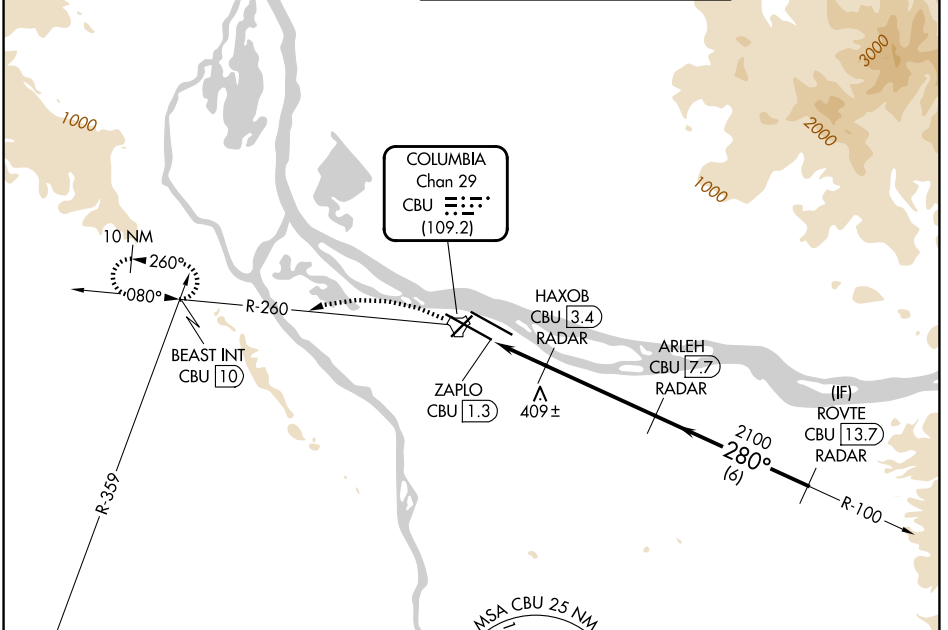


|   |                        |  |
|---|------------------------|--|
| TACAN CBU<br>Chan <b>29</b><br><b>(109.2)</b> | APP CRS<br><b>280°</b> | Rwy Ldg <b>11000</b><br>TDZE <b>23</b><br>Apt Elev <b>31</b> |
|---|------------------------|--|

# TACAN RWY 28L

PORTLAND INTL (PDX)

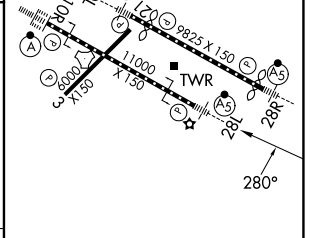
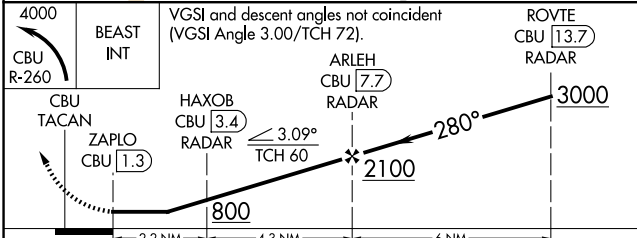
|   |   |  |   |
|---|---|--|---|
| RADAR required for procedure entry.                         |   | MALSR  | MISSED APPROACH: Climbing left turn to 4000 on CBU TACAN R-260 to BEAST INT/ CBU 10 DME and hold, continue climb-in-hold to 4000. |
| For inop ALS, increase S-28L Cat C/D/E visibility to 1¼ SM. |   |  |   |
| D-ATIS<br><b>128.35 269.9</b>                               | PORTLAND APP CON<br><b>124.35 299.2</b> | PORTLAND TOWER<br><b>118.7 257.8</b> (10L-28R)<br><b>123.775 251.125</b> (3-21, 10R-28L) | GND CON<br><b>121.9 348.6</b>   |



NW-1, 09 JUL 2026 to 06 AUG 2026

NW-1, 09 JUL 2026 to 06 AUG 2026

|         |         |
|---------|---------|
| ELEV 31 | TDZE 23 |
|---------|---------|



| CATEGORY | A                    | B                    | C      | D             | E                       |
|----------|----------------------|----------------------|--------|---------------|-------------------------|
| S-28L    | 660-24               | 637 (700-½)          | 660-1⅓ | 637 (700-1⅓)  |                         |
| CIRCLING | 740-1<br>709 (800-1) | 760-1<br>729 (800-1) | 1060-3 | 1029 (1100-3) | 1140-3<br>1109 (1200-3) |

REIL Rwys 3 and 21  
TDZL/RCLS Rwy 10R  
MIRL Rwy 3-21  
HIRL Rwys 10L-28R and 10R-28L