

# ILS or LOC RWY 28


LOC/DME I-SVN <b>109.5</b> Chan <b>32</b>	APCH CRS <b>276°</b>	Rwy Idg <b>11,393</b> TDZE <b>41</b> Arpt Elev <b>41</b>
---	-------------------------	--

[USA]

HUNTER AAF (KSVN)

DME required

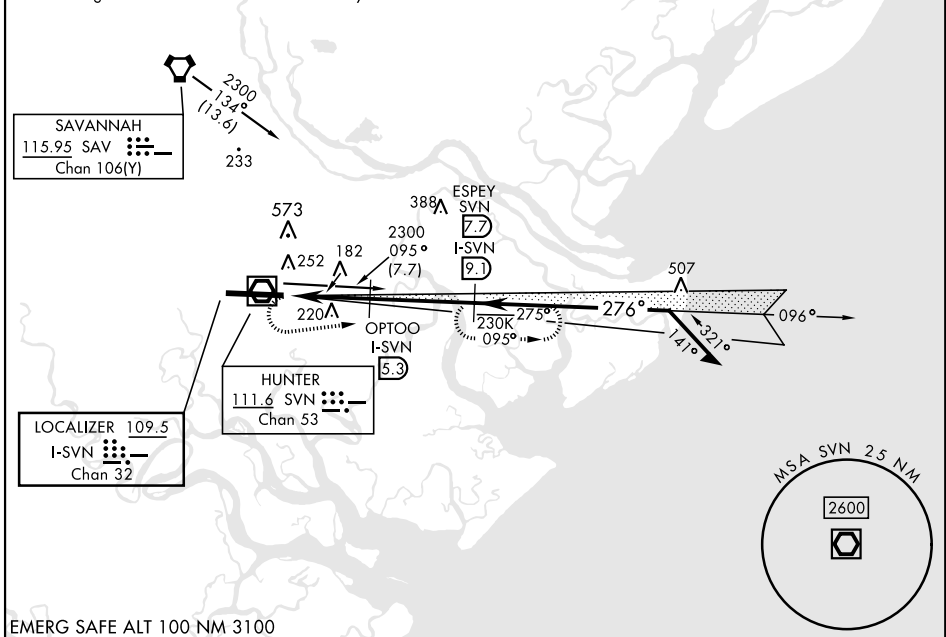
▼ \* When ALS inop, increase RVR to 40, vis to ¾ mile.  
 \*\* When ALS inop, increase CAT AB RVR to 55, vis to 1 mile, CAT CD vis to 1¼ miles.  
 \*\*\* When ALS inop, increase CAT AB RVR to 55, vis to 1 mile, CAT CD vis to 1½ miles.

ALS-F-1 

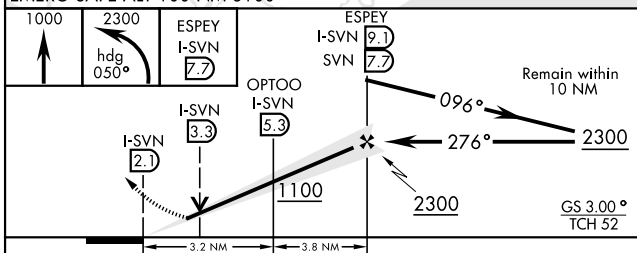
MISSED APPROACH: Climb to 1000, then climbing left turn to 2300 heading 050° and on SVN VOR/DME R-095 to ESPEY/ SVN 7.7 DME and hold.

ATIS ★ <b>127.525 323.125</b>	SAVANNAH APP CON ★ <b>120.4 353.775</b>	TOWER ★ <b>124.975 (CTAF) 0 279.575</b>	GND CON ★ <b>121.8 291.675</b>
----------------------------------	--	--	-----------------------------------

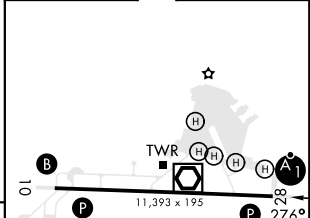
\*\*\*\* Circling not authorized for CAT CD N of Rwy 10-28.





EMERG SAFE ALT 100 NM 3100



ELEV 41	TDZE 41
---------	---------



CATEGORY	A	B	C	D
S-ILS 28*	241/24		200	(200-½)
S-LOC 28**	480/24	439 (500-½)	480/40	439 (500-¾)
**** CIRCLING	600-1	559 (600-1)	600-1½	620-2
			559 (600-½)	579 (600-2)
LOCAL ALTIMETER, WITHOUT LAST STEPDOWN FIX				
S-LOC 28***	600/24	559 (600-½)	600/60	559 (600-1½)
**** CIRCLING	600-1	559 (600-1)	600-1½	620-2
			559 (600-1%)	579 (600-2)

REIL Rwy 10 	
HIRL Rwy 10-28 	
FAF to MAP 7 NM	
Knots	60 90 120 150 180
Min:Sec	7:00 4:40 3:30 2:48 2:20

# ILS or LOC RWY 28

SE-4, 09 JUL 2026 to 06 AUG 2026

SE-4, 09 JUL 2026 to 06 AUG 2026