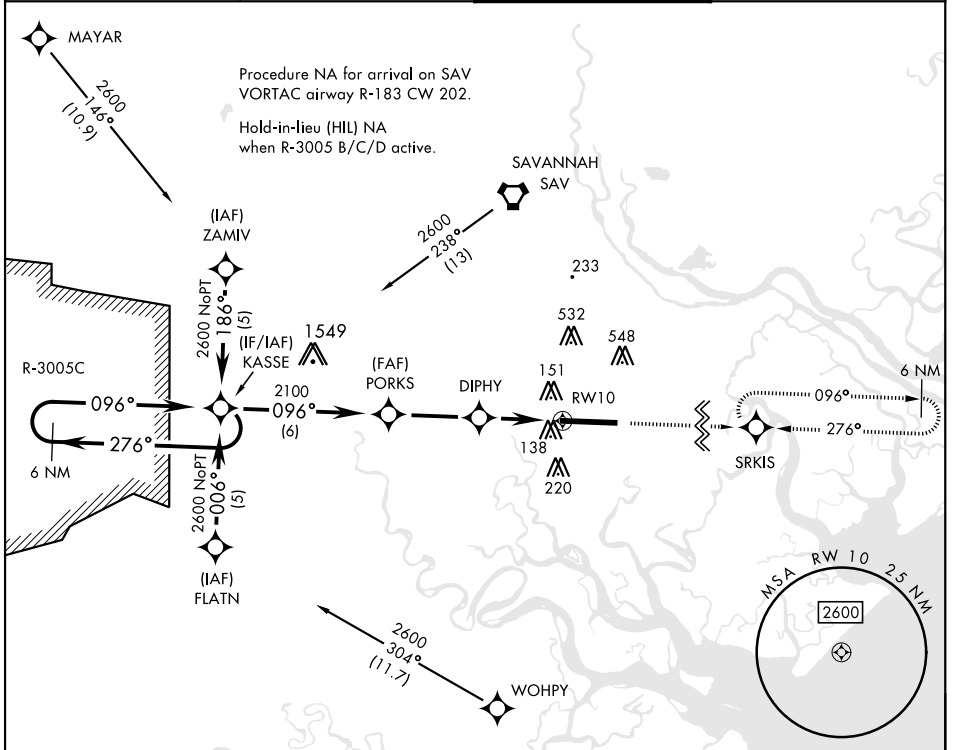


RNAV (GPS) RWY 10

APCH CRS 096°	Rwy Idg 11,393 TDZE 26 Arprt Elev 41	[USA]	HUNTER AAF (KSVN)
RNP APCH-GPS		MISSED APPROACH: Climb to 2500 direct SRKIS and hold.	
RADAR required when R-3005 B/C/D active.			
▼ *When ALS inop, increase CAT AB vis to 1 mile; CAT CD vis to 1¼ miles. **Circling not authorized N of Rwy 10-28 for CAT D.			
ATIS★ 127.525 323.125	SAVANNAH APP CON★ 120.4 353.775	TOWER★ 124.975 (CTAF) 0 279.575	GND CON★ 121.8 291.675



SE-4, 09 JUL 2026 to 06 AUG 2026

SE-4, 09 JUL 2026 to 06 AUG 2026

2500 SRKIS 		ELEV 41	TDZE 26	
6 NM Holding Pattern KASSE 		184 146 TWVR 97 182 11,393 x 195 096°		
CATEGORY	A	B	C	D
RNAV MDA*	460-1	434	(500-1)	
CIRCLING**	600-1	559 (600-1)	920-2½ 879 (900-2½)	920-2¾ 879 (900-2¾)

RNAV (GPS) RWY 10