

VOR/DME RWY 28

VOR/DME SVN 111.6 Chan 53	APCH CRS 282°	Rwy Idg 11,393 TDZE 41 Arpt Elev 41
---	-------------------------	--

[USA]

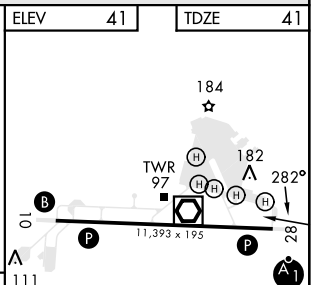
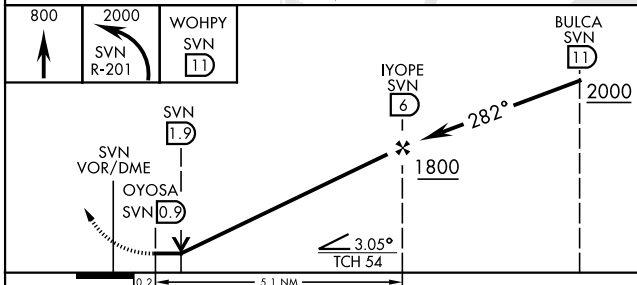
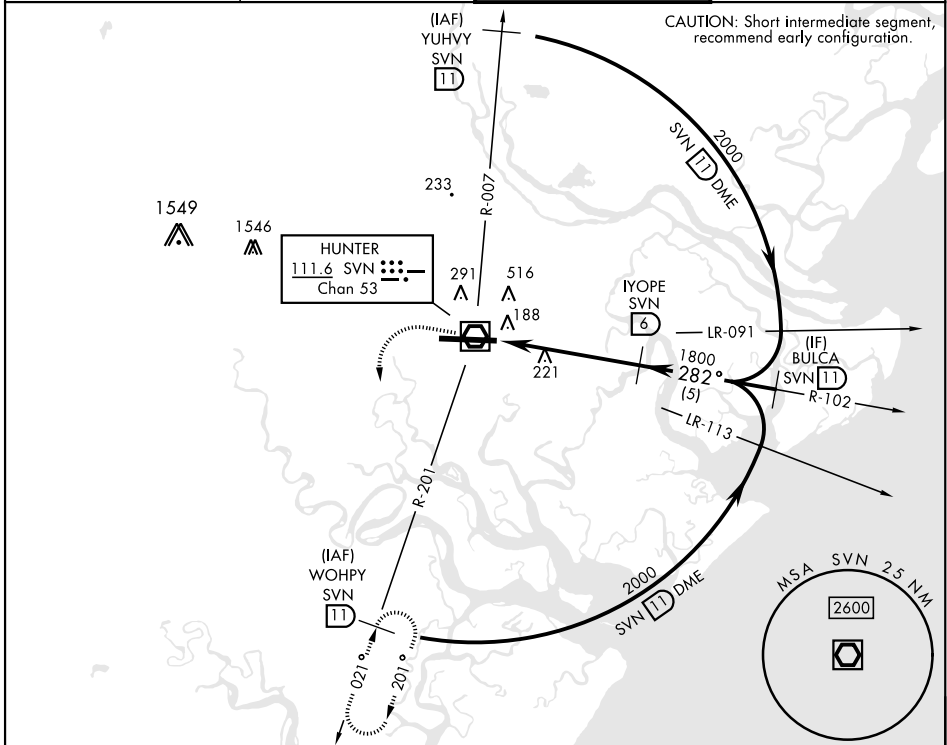
HUNTER AAF (KSVN)

▲ * When ALS inop, increase CAT AB RVR to 55, vis to 1 mile; CAT CD vis to 1½ miles.
** Circling not authorized N of Rwy 10-28 for CAT D.

ALSF-1

MISSED APPROACH: Climb to 800, then climbing left turn to 2000 via SVN VOR/DME R-201 to WOHPY/11 DME and hold.

ATIS ★ 127.525 323.125	SAVANNAH APP CON ★ 120.4 353.775	TOWER ★ 124.975 (CTAF) 0 279.575	GND CON ★ 121.8 291.675
----------------------------------	--	--	-----------------------------------



CATEGORY	A	B	C	D
S-28*	580/24 539 (600-½)		580/55 539 (600-1)	
CIRCLING**	600-1 559 (600-1)		920-2½ 879 (900-2½)	920-2¾ 879 (900-2¾)

HIRL Rwy 10-28

REL Rwy 10

VOR/DME RWY 28

SE-4, 09 JUL 2026 to 06 AUG 2026

SE-4, 09 JUL 2026 to 06 AUG 2026