

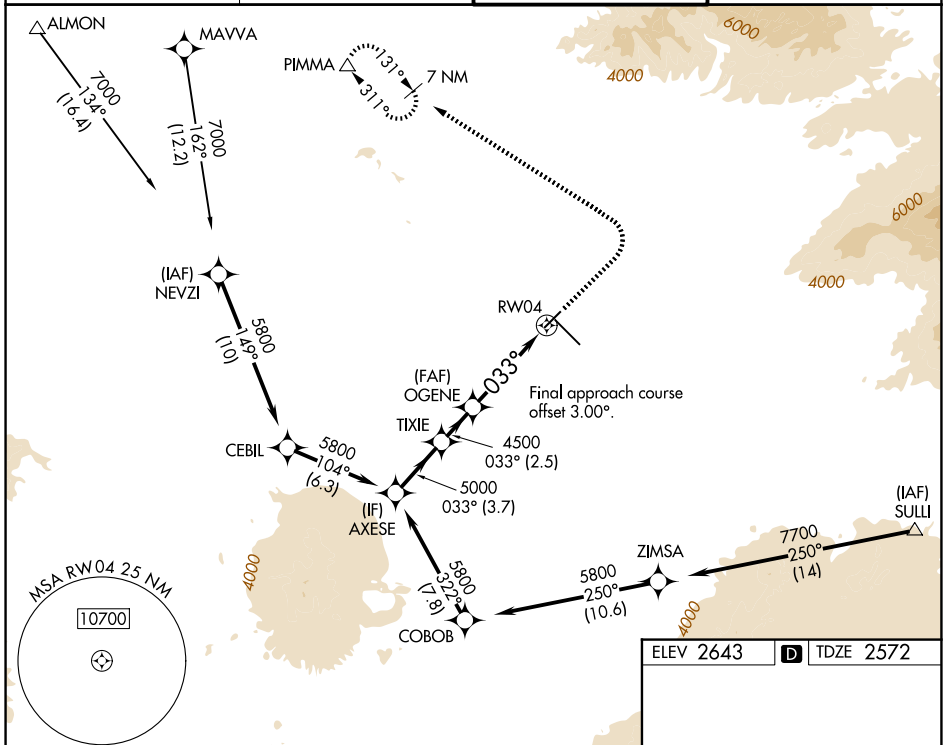
APP CRS	Rwy Ldg	<b>6150</b>
<b>033°</b>	TDZE	<b>2572</b>
	Apt Elev	<b>2643</b>

# RNAV (GPS) RWY 4

TUCSON INTL (TUS)

RNP APCH - GPS.	MISSED APPROACH: Climb to 3500 then climbing left turn to 6500 direct PIMMA and hold.
<p><b>▼</b> Rwy 4 helicopter visibility reduction below 3/4 SM NA. For uncompensated Baro-VNAV systems, LNAV/VNAV NA below -2°C or above 54°C.</p> <p><b>▲</b></p>	

ATIS <b>123.8 279.65</b>	TUCSON APP CON <b>119.4 318.1</b>	TUCSON TOWER <b>118.3 257.8</b>	GND CON <b>120.025 348.6</b>
-----------------------------	--------------------------------------	------------------------------------	---------------------------------

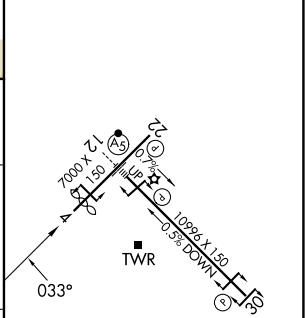


SW-4, 09 JUL 2026 to 06 AUG 2026

SW-4, 09 JUL 2026 to 06 AUG 2026

ELEV 2643	<b>D</b> TDZE 2572
-----------	--------------------

	AXESE	TIXIE	OGENE	3500	6500	PIMMA
	5800		4500	↑	↶	△
	033°		4500	1.8 NM to RW04		
GP 3.00°						
TCH 50						
	← 3.7 NM	← 2.5 NM	← 4.1 NM	← 1.8 NM		
CATEGORY	A	B	C	D		
LNAV/ VNAV DA	3284-2½		712 (700-2½)			
LNAV MDA	3180-1	608 (600-1)	3180-1¾	608 (600-1¾)		
CIRCLING	3180-1 537 (600-1)	3220-1 577 (600-1)	3220-1¾ 577 (600-1¾)	3660-3 1017 (1100-3)		



HIRL Rwy 12-30  
MIRL Rwy 4-22  
REIL Rwy 22 and 30