

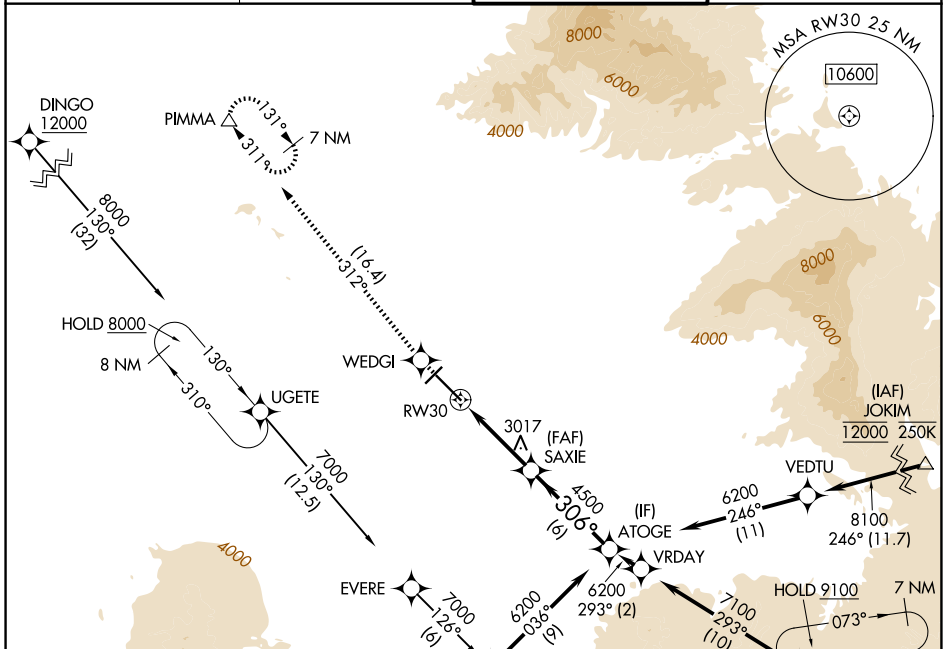
WAAS CH <b>45746</b> <b>W30A</b>	APP CRS <b>306°</b>	Rwy Ldg <b>10996</b> TDZE <b>2643</b> Apt Elev <b>2643</b>
--	------------------------	--

# RNAV (GPS) Z RWY 30

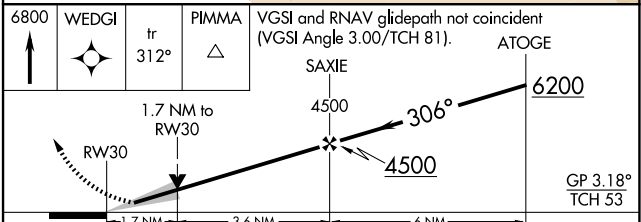
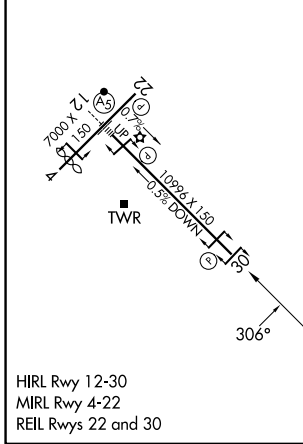
TUCSON INTL (TUS)

RNP APCH - GPS.	MISSED APPROACH: Climb to 6800 direct WEDGI and on track 312° to PIMMA and hold.
<p>▼ For uncompensated Baro-VNAV systems, LNAV/VNAV NA below -2°C or above 54°C.</p> <p>▲</p>	

ATIS <b>123.8 279.65</b>	TUCSON APP CON <b>119.4 318.1</b>	TUCSON TOWER <b>118.3 257.8</b>	GND CON <b>120.025 348.6</b>
-----------------------------	--------------------------------------	------------------------------------	---------------------------------



ELEV 2643	<b>D</b>	TDZE 2643
-----------	----------	-----------



CATEGORY	A	B	C	D
LPV DA		2929-7/8	286 (300-7/8)	
LNAV/VNAV DA		3029-1 1/8	386 (400-1 1/8)	
LNAV MDA	3280-1	637 (700-1)	3280-1 3/4	637 (700-1 3/4)
CIRCLING	3300-1	657 (700-1)	3300-1 3/4	3640-3 997 (1000-3)

SW-4, 09 JUL 2026 to 06 AUG 2026

SW-4, 09 JUL 2026 to 06 AUG 2026