

VORTAC TUS <b>116.0</b> Chan <b>107</b>	APP CRS <b>123°</b>	Rwy Ldg <b>10996</b> TDZE <b>2599</b> Apt Elev <b>2643</b>
-----------------------------------------------	------------------------	------------------------------------------------------------------

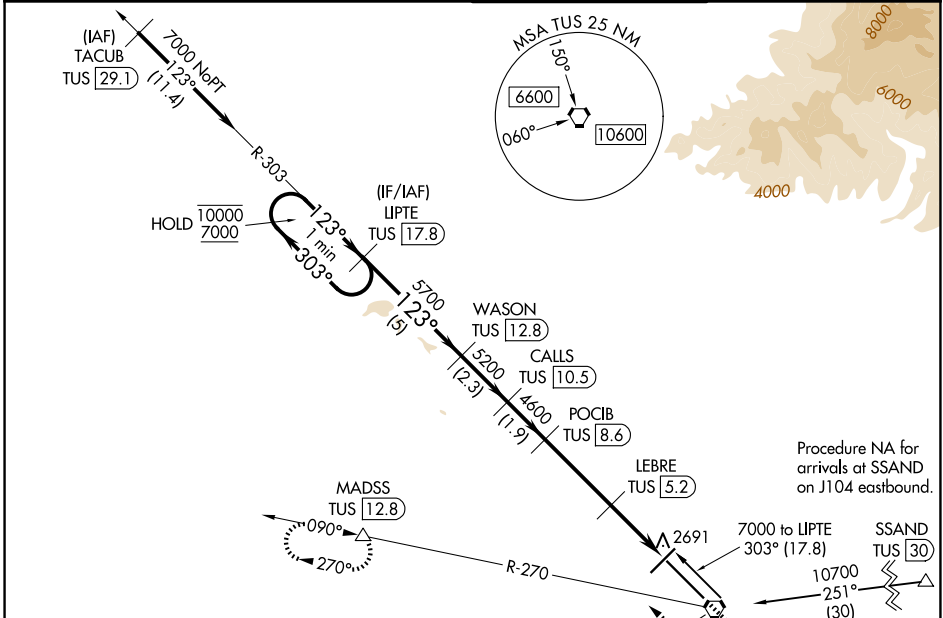
# VOR or TACAN RWY 12

TUCSON INTL (TUS)

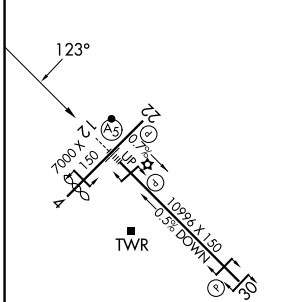
DME required. RADAR required for procedure entry at TACUB.  
 For inop ALS, increase Cat E visibility to 1¼ SM.

MALS R MISSED APPROACH: Climb to 4000 then climbing right turn to 6000 on heading 300° and TUS VORTAC R-270 to MADSS/TUS 12.8 DME and hold, continue climb in hold to 6000.

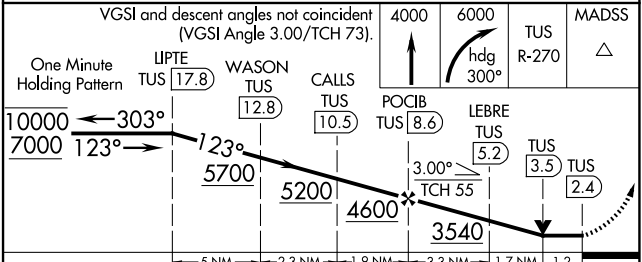
ATIS <b>123.8 279.65</b>	TUCSON APP CON <b>119.4 318.1</b>	TUCSON TOWER <b>118.3 257.8</b>	GND CON <b>120.025 348.6</b>
-----------------------------	--------------------------------------	------------------------------------	---------------------------------



ELEV 2643	<b>D</b>	TDZE 2599
-----------	----------	-----------



Procedure NA for arrival on TUS VORTAC airway radials 288 CW 308.



CATEGORY	A	B	C	D	E
S-12	3020/24	421 (400-½)	3020/40	421 (400-¾)	
CIRCLING	3160-1 517 (600-1)	3180-1 537 (600-1)	3200-1½ 557 (600-1½)	3660-3 1017 (1100-3)	3920-3 1277 (1300-3)

HIRL Rwy 12-30  
 MIRL Rwy 4-22  
 REIL Rwy 22 and 30

TUCSON, ARIZONA  
 Orig 30NOV23

32°07'N-110°56'W

# VOR or TACAN RWY 12

SW-4, 09 JUL 2026 to 06 AUG 2026

SW-4, 09 JUL 2026 to 06 AUG 2026