

| | | |
|-------------|----------|-------------|
| APP CRS | Rwy Idg | 6001 |
| 302° | TDZE | 72 |
| | Apt Elev | 79 |

RNAV (GPS) RWY 30

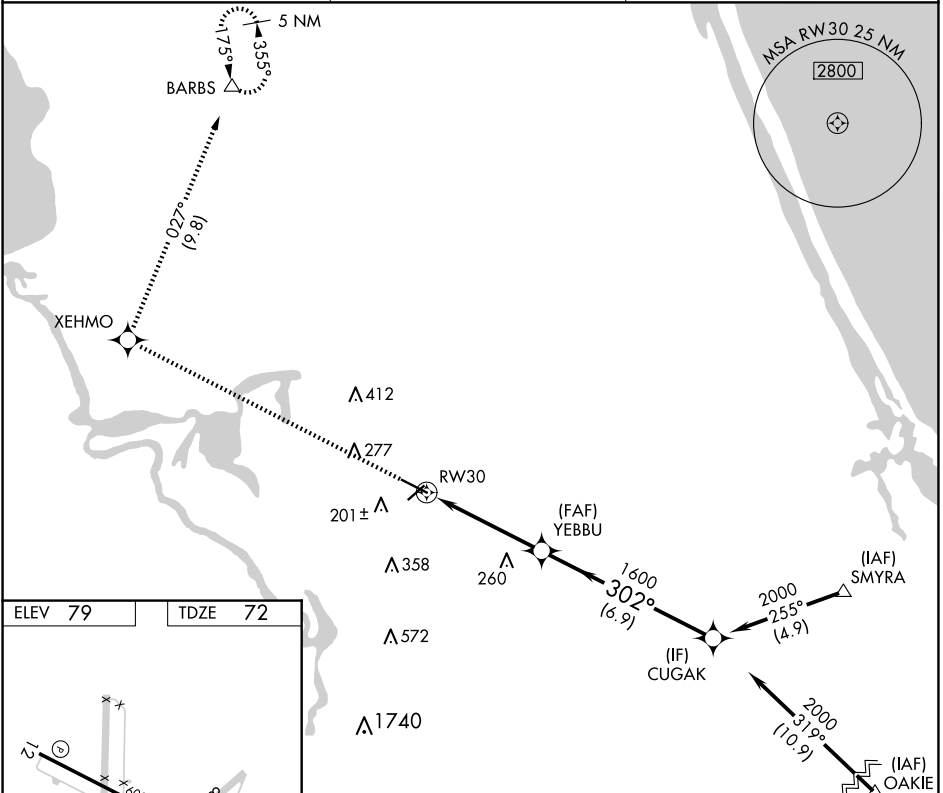
DELAND MUNI-SIDNEY H TAYLOR FLD (DED)

RNP APCH.

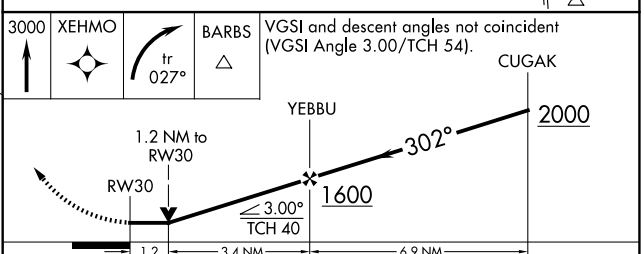
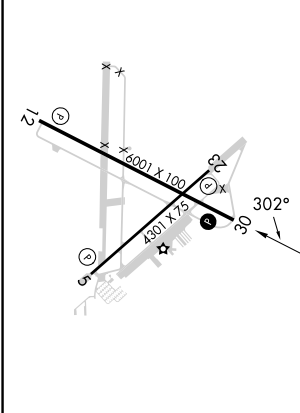
⚠ Rwy 30 helicopter visibility reduction below 3/4 SM NA. VDP NA when using Daytona Beach Intl altimeter setting. When local altimeter setting not received, use Daytona Beach Intl altimeter setting and increase all MDAs 40 feet.

MISSED APPROACH: Climb to 3000 direct XEHMO and right turn on track 027° direct BARBS and hold.

| | | |
|--------------------------|--|-----------------------------------|
| AWOS-3 119.575 | DAYTONA APP CON 125.35 322.3 | UNICOM 123.075 (CTAF) 0 |
|--------------------------|--|-----------------------------------|



| | |
|---------|---------|
| ELEV 79 | TDZE 72 |
|---------|---------|



HIRL Rwy 12-30 **Ⓛ**
 MIRL Rwy 5-23 **Ⓛ**
 REIL Rwy 12 and 30 **Ⓛ**

| | | | | |
|----------|-------|-------------|--------|--------------|
| CATEGORY | A | B | C | D |
| LNAV MDA | 500-1 | 428 (500-1) | 500-1¼ | 428 (500-1¼) |

SE-3, 09 JUL 2026 to 06 AUG 2026

SE-3, 09 JUL 2026 to 06 AUG 2026