

WAAS CH <b>53310</b> <b>W35A</b>	APP CRS <b>358°</b>	Rwy Ldg TDZE Apt Elev	<b>5501</b> <b>821</b> <b>825</b>
--	------------------------	-----------------------------	---

# RNAV (GPS) RWY 35

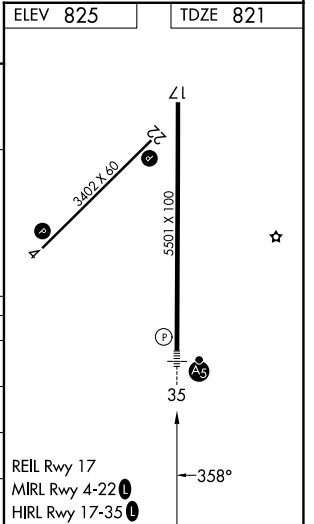
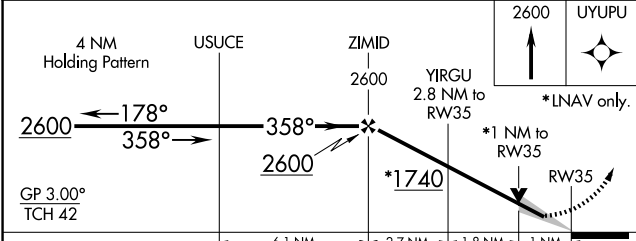
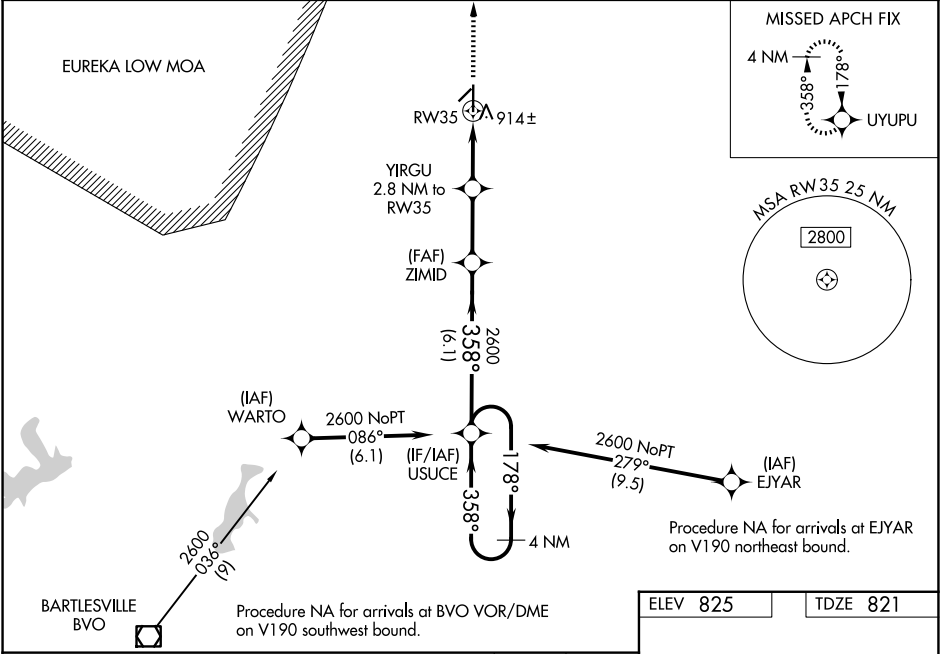
INDEPENDENCE MUNI (IDP)

**⚠** For uncompensated Baro-VNAV systems, LNAV/VNAV NA below -16°C (4°F) or above 54°C (130°F). Circling Rwy 4, 22 NA at night.  
DME/DME RNP-0.3 NA. For inop ALS, increase LNAV/VNAV DA all Cats visibilities to 7/5 SM and LNAV MDA Cats C and D visibilities to 1 SM.

MALSR

MISSED APPROACH: Climb to 2600 direct UYUPU and hold.

AWOS-3PT <b>118.525</b>	KANSAS CITY CENTER <b>128.6 282.325</b>	UNICOM <b>123.05 (CTAF)</b>
----------------------------	--	--------------------------------



CATEGORY	A	B	C	D
LPV DA	1021-1/2		200 (200-1/2)	
LNAV/VNAV DA	1097-1/2		276 (300-1/2)	
LNAV MDA	1180-1/2 359 (400-1/2)		1180-5/8 359 (400-5/8)	
CIRCLING	1280-1 455 (500-1)		1340-1 1/2 515 (600-1/2) 1680-2 3/4 855 (900-2 3/4)	

NC-2, 09 JUL 2026 to 06 AUG 2026

NC-2, 09 JUL 2026 to 06 AUG 2026