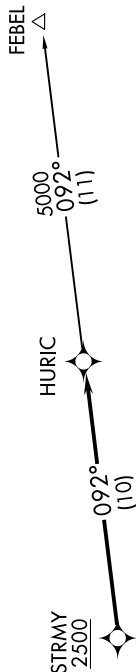


HURIC FOUR DEPARTURE (RNAV)

SE-2: 09 JUL 2026 to 06 AUG 2026

**TOP ALTITUDE:
(JETS) 6000
(PROPS) ASSIGNED BY ATC**

RALEIGH DEP CON
125.3 353.675
D-ATIS
123.8
CINC DEL
120.1
CPDLC
GND CON
121.9 348.6
RALEIGH TOWER
127.45 257.8



TAKEOFF MINIMUMS

Rwys 5L/R: Standard.
Rwy 14: Standard with minimum climb of 310' per NM to 1000.
Rwy 23L: Standard with minimum climb of 250' per NM to 2300.
Rwy 23R: Standard with minimum climb of 240' per NM to 2100.
Rwy 32: 300-1.

NOTE: Chart not to scale.

DEPARTURE ROUTE DESCRIPTION

TAKEOFF RUNWAYS 5L/R, 14, 23L/R, 32: Climb on assigned heading for RADAR vectors to cross STRMY at or above 2500, thence. . . .

NOTE: RNAV 1.
NOTE: DME/DME/IRU or GPS required.
NOTE: RADAR required.
NOTE: If unable to accept climb rate, advise ATC on initial contact.

. . . . on track 092° to HURIC. Turbojets maintain 6000, propellers maintain altitude assigned by ATC. Expect clearance to filed altitude within ten minutes after departure.

FEBEL TRANSITION (HURIC4.FEBEL)

SE-2: 09 JUL 2026 to 06 AUG 2026