

LOC/DME I-GKK <b>109.1</b> Chan 28	APP CRS <b>054°</b>	Rwy Ldg TDZE Apt Elev <b>10000</b> <b>384</b> <b>435</b>
--	------------------------	---

# ILS or LOC RWY 5L

RALEIGH-DURHAM INTL (RDU)

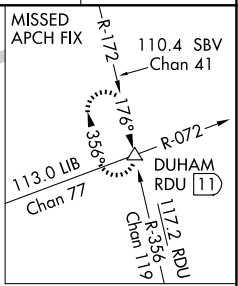
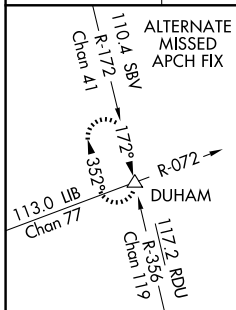
RNAV 1-DME/DME/IRU or GPS or RADAR required for procedure entry. DME or RADAR required for LOC only.

Simultaneous approach authorized.

MALSR

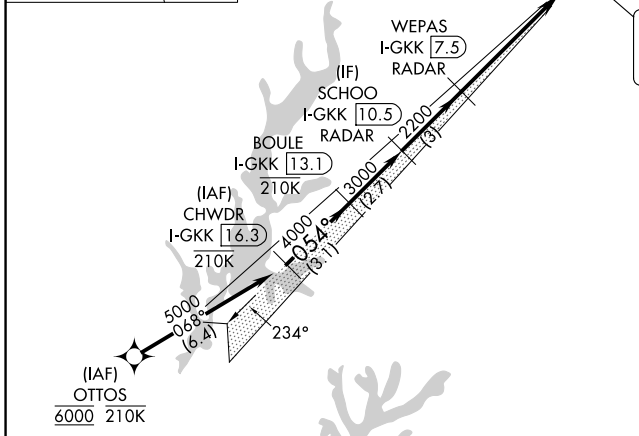
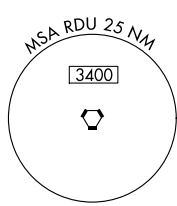
MISSED APPROACH: Climb to 1000 then climbing left turn to 2200 on heading 310° and RDU VORTAC R-356 to DUHAM INT/ RDU 11 DME and hold.

D-ATIS <b>123.8</b>	RALEIGH APP CON <b>127.675 307.9</b>	RALEIGH TOWER <b>127.45 257.8</b>	GND CON <b>121.9 348.6</b>	CLNC DEL <b>120.1</b>	CPDLC
------------------------	---	--------------------------------------	-------------------------------	--------------------------	-------



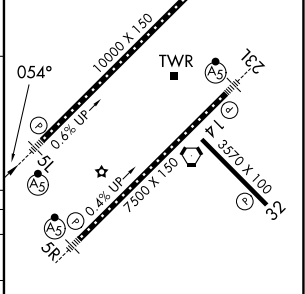
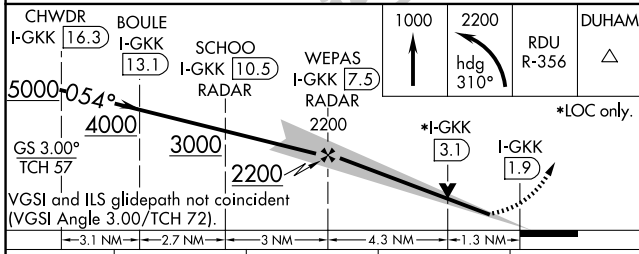
LOCALIZER **109.1**  
I-GKK  
Chan 28

RALEIGH/DURHAM  
**117.2 RDU**  
Chan 119



ELEV 435 **D** TDZE 384

REIL Rwy 32  
MIRL Rwy 14-32  
HIRL Rwys 5R-23L and 5L-23R  
TDZ/CL Rwys 23R, 23L and 5L



CATEGORY	A	B	C	D
S-ILS 5L	598/18 214 (200-½)			
S-LOC 5L	840/24 456 (500-½)	840/45 456 (500-¾)		
CIRCLING	960-1 525 (600-1)	1020-1½ 585 (600-1½)	1180-2½ 745 (800-2½)	

FAF to MAP 5.6 NM

Knots	60	90	120	150	180
Min:Sec	5:36	3:44	2:48	2:14	1:52

SE-2, 09 JUL 2026 to 06 AUG 2026

SE-2, 09 JUL 2026 to 06 AUG 2026