

APP CRS	Rwy Ldg	<b>3570</b>
<b>324°</b>	TDZE	<b>429</b>
	Apt Elev	<b>435</b>

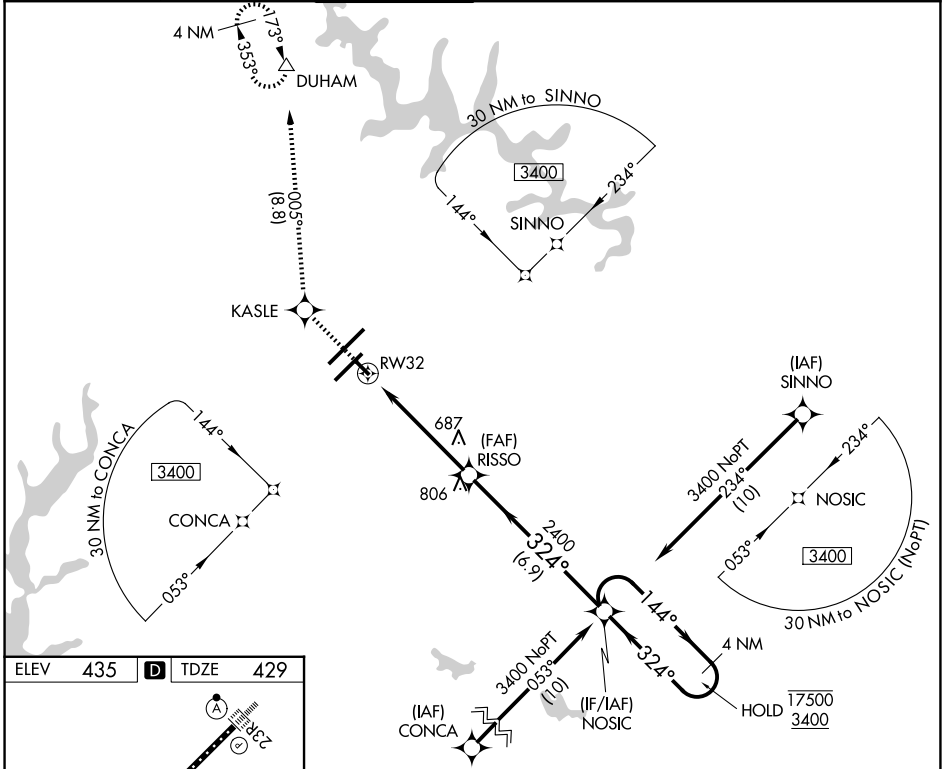
# RNAV (GPS) RWY 32

RALEIGH-DURHAM INTL (RDU)

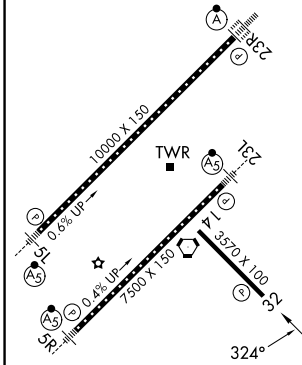
RNP APCH - GPS.  
 ▼ Rwy 32 helicopter visibility reduction below 3/4 SM NA. For uncompensated Baro-VNAV systems, LNAV/VNAV NA below -15°C or above 54°C.

MISSED APPROACH: Climb to 2200 direct KASLE and on track 005° to DUHAM and hold.

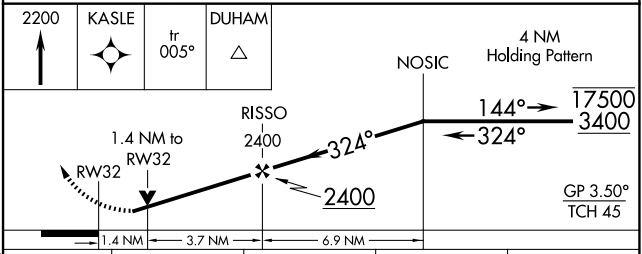
D-ATIS	RALEIGH APP CON	RALEIGH TOWER	GND CON	CLNC DEL	CPDLC
<b>123.8</b>	<b>127.675 307.9</b>	<b>127.45 257.8</b>	<b>121.9 348.6</b>	<b>120.1</b>	



ELEV	<b>435</b>	<b>D</b>	TDZE	<b>429</b>
------	------------	----------	------	------------



REIL Rwy 32  
 MIRL Rwy 14-32  
 HIRL Rwys 5R-23L and 5L-23R  
 TDZ/CL Rwys 23R, 23L and 5L



CATEGORY	A	B	C	D
LNAV/VNAV DA	820-1 1/8 391 (400-1 1/8)			NA
LNAV MDA	1000-1	571 (600-1)	1000-1 5/8 571 (600-1 5/8)	NA
CIRCLING	1000-1	565 (600-1)	1040-1 3/4 605 (700-1 3/4)	NA

SE-2, 09 JUL 2026 to 06 AUG 2026

SE-2, 09 JUL 2026 to 06 AUG 2026